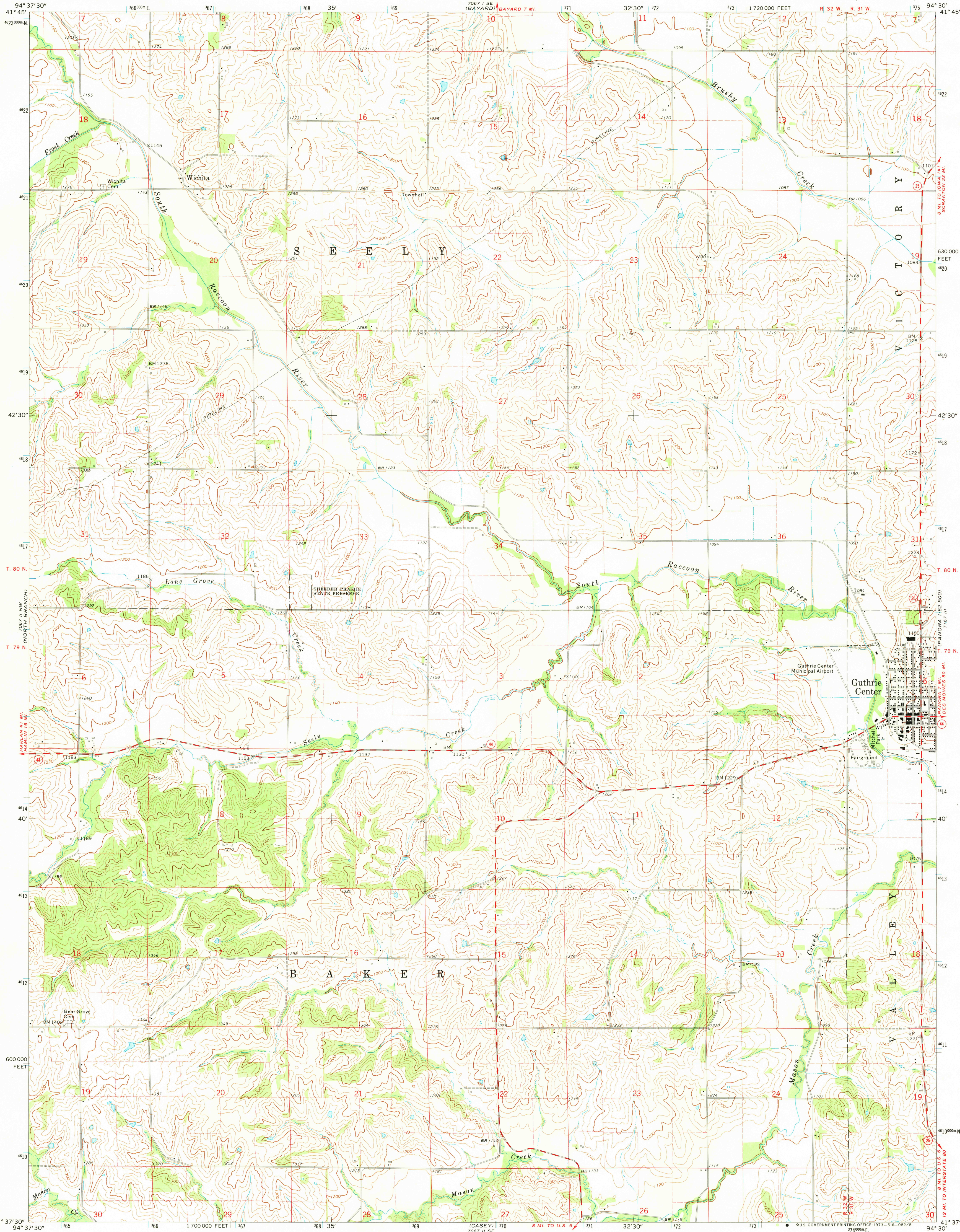
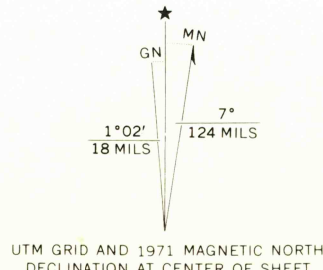


UNITED STATES  
DEPARTMENT OF THE INTERIOR  
GEOLOGICAL SURVEY

GUTHRIE CENTER WEST QUADRANGLE  
IOWA—GUTHRIE CO.  
7.5 MINUTE SERIES (TOPOGRAPHIC)



Mapped, edited, and published by the Geological Survey  
Control by USGS and USC&GS  
Topography by photogrammetric methods from aerial  
photographs taken 1966. Field checked 1971  
Polyconic projection. 1927 North American datum  
10,000-foot grid based on Iowa coordinate system, south zone  
1000-meter Universal Transverse Mercator grid ticks,  
zone 15, shown in blue  
Fine red dashed lines indicate selected fence and field lines where  
generally visible on aerial photographs. This information is unchecked



SCALE 1:24,000  
CONTOUR INTERVAL 20 FEET  
DATUM IS MEAN SEA LEVEL  
THIS MAP COMPLIES WITH NATIONAL MAP ACCURACY STANDARDS  
FOR SALE BY U. S. GEOLOGICAL SURVEY, DENVER, COLORADO 80225, OR WASHINGTON, D. C. 20242  
AND BY THE IOWA GEOLOGICAL SURVEY, IOWA CITY, IOWA 52240  
A FOLDER DESCRIBING TOPOGRAPHIC MAPS AND SYMBOLS IS AVAILABLE ON REQUEST



ROAD CLASSIFICATION  
Primary highway, hard surface ———— improved surface  
Secondary highway, hard surface ———— Unimproved road  
Interstate Route ———— U. S. Route ———— State Route

USGS GUTHRIE CENTER WEST, IOWA  
N4137.5—W9430.7.5  
1971

Handwritten notes: "Haven 2500"