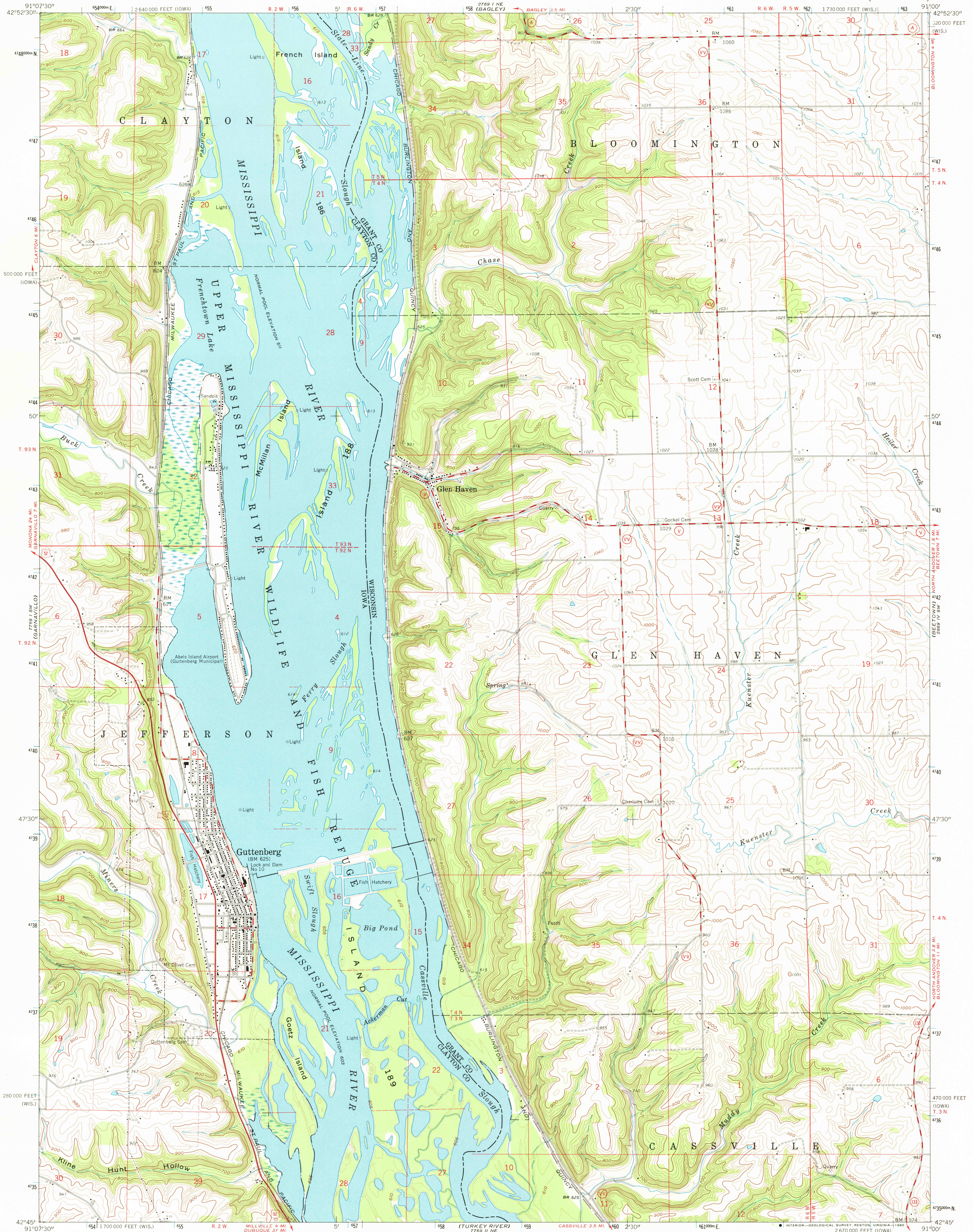


UNITED STATES  
DEPARTMENT OF THE INTERIOR  
GEOLOGICAL SURVEY

GUTTENBERG QUADRANGLE  
IOWA-WISCONSIN  
7.5 MINUTE SERIES (TOPOGRAPHIC)



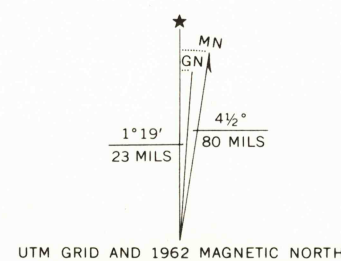
Mapped, edited, and published by the Geological Survey

Control by USGS, USC&GS, and USCE

Topography by photogrammetric methods from aerial photographs taken 1958. Field checked 1962

Polyconic projection, 1927 North American datum  
10,000-foot grids based on Wisconsin coordinate system,  
south zone and Iowa coordinate system, north zone  
1000-meter Universal Transverse Mercator grid ticks,  
zone 15, shown in blue  
To place on the predicted North American Datum 1983  
move the projection lines 5 meters north and  
12 meters east as shown by dashed corner ticks

There may be private inholdings within the boundaries of  
the National or State reservations shown on this map  
Map photoinspected 1978  
No major culture or drainage changes observed



SCALE 1:24,000  
1 0 1000 2000 3000 4000 5000 6000 7000 FEET  
1 0 1 2 3 4 5 6 7 8 9 10 KILOMETER

CONTOUR INTERVAL 20 FEET  
DOTTED LINES REPRESENT 5-FOOT CONTOURS  
NATIONAL GEODETIC VERTICAL DATUM OF 1929

THIS MAP COMPLIES WITH NATIONAL MAP ACCURACY STANDARDS  
FOR SALE BY U.S. GEOLOGICAL SURVEY, DENVER, COLORADO 80225 OR RESTON, VIRGINIA 22092  
THE WISCONSIN GEOLOGICAL AND NATURAL HISTORY SURVEY, MADISON, WISCONSIN 53706  
AND BY THE IOWA GEOLOGICAL SURVEY, IOWA CITY, IOWA 52240  
A FOLDER DESCRIBING TOPOGRAPHIC MAPS AND SYMBOLS IS AVAILABLE ON REQUEST



QUADRANGLE LOCATION

ROAD CLASSIFICATION  
Heavy-duty Road Light-duty Road  
Medium-duty Road Unimproved dirt Road  
U.S. Route State Route

GUTTENBERG, IOWA-WIS.  
N4245-W9100/7.5

1962  
PHOTOINSPECTED 1978  
DMA 7769 I SE-SERIES V976

SEP 30 1980

1900