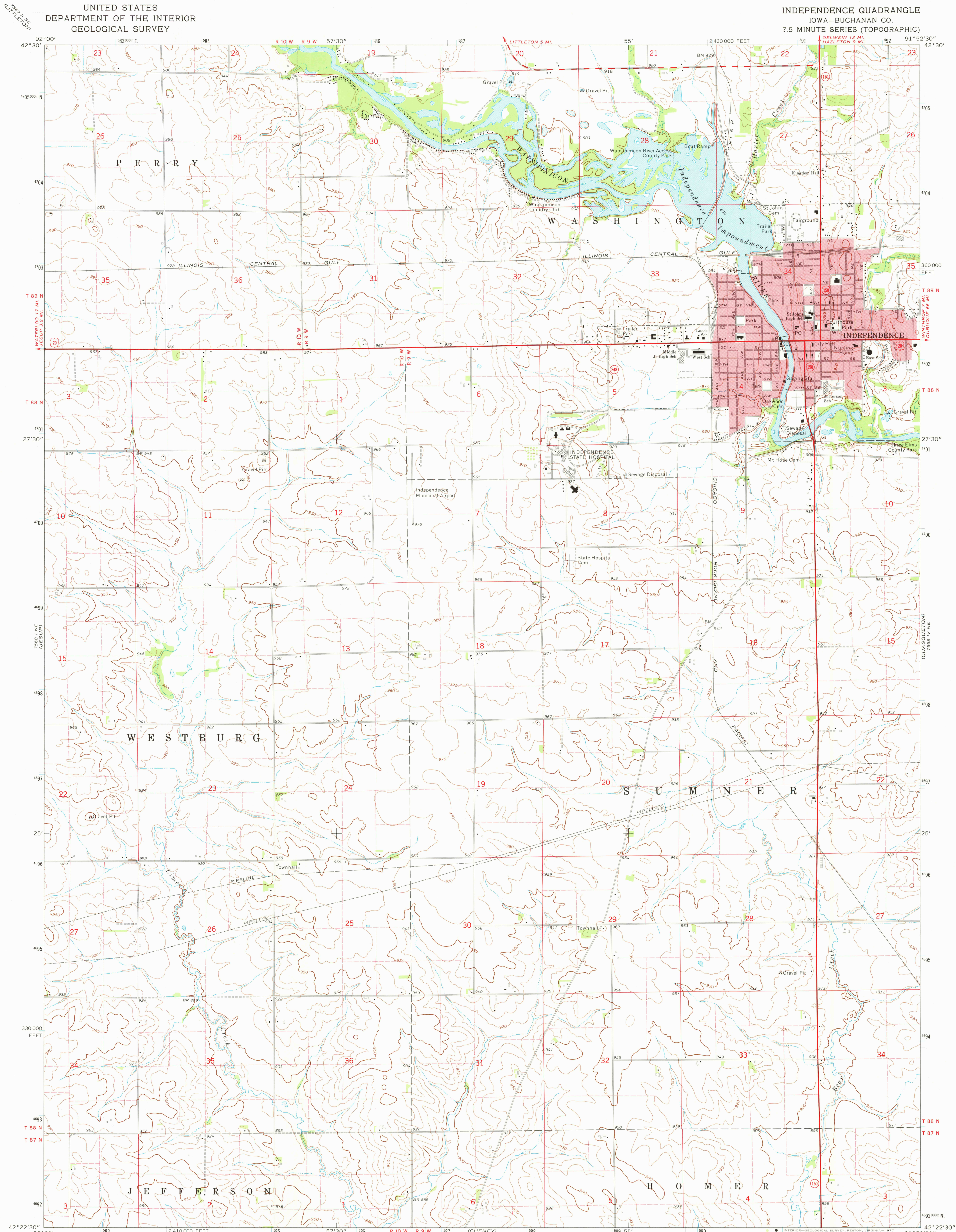


UNITED STATES
DEPARTMENT OF THE INTERIOR
GEOLOGICAL SURVEY

INDEPENDENCE QUADRANGLE
IOWA—BUCHANAN CO.
7.5 MINUTE SERIES (TOPOGRAPHIC)



Mapped, edited, and published by the Geological Survey

Control by USGS and NOS/NOAA

Topography by photogrammetric methods from aerial

photographs taken 1973. Field checked 1973

Projection and 10,000-foot grid ticks: Iowa coordinate

system, north zone (Lambert conformal conic)

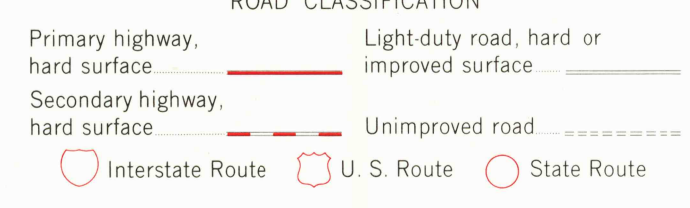
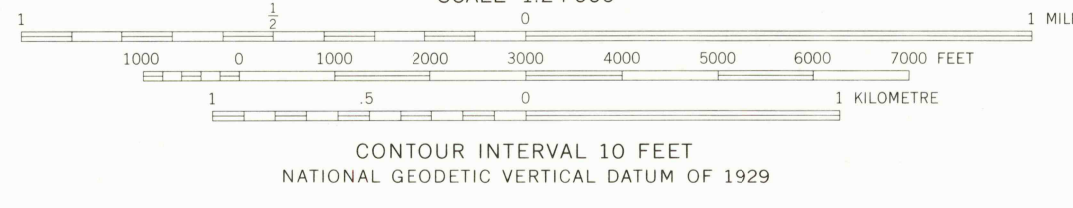
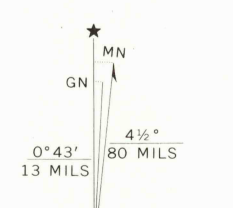
1000-metre Universal Transverse Mercator grid ticks,

zone 15, shown in blue. 1927 North American datum

Red tint indicates areas in which only landmark buildings are shown

Fine red dashed lines indicate selected fence and field lines where

generally visible on aerial photographs. This information is unchecked



THIS MAP COMPLIES WITH NATIONAL MAP ACCURACY STANDARDS
FOR SALE BY U.S. GEOLOGICAL SURVEY, DENVER, COLORADO 80225, OR RESTON, VIRGINIA 22092
AND BY THE IOWA GEOLOGICAL SURVEY, IOWA CITY, IOWA 52240
A FOLDER DESCRIBING TOPOGRAPHIC MAPS AND SYMBOLS IS AVAILABLE ON REQUEST

USGS
Historical File
Topographic Division
INDEPENDENCE, IOWA
N4222.5—W9152.5/7.5
1973
AMS 7668 IV NW—SERIES V876

MAY 19 1977