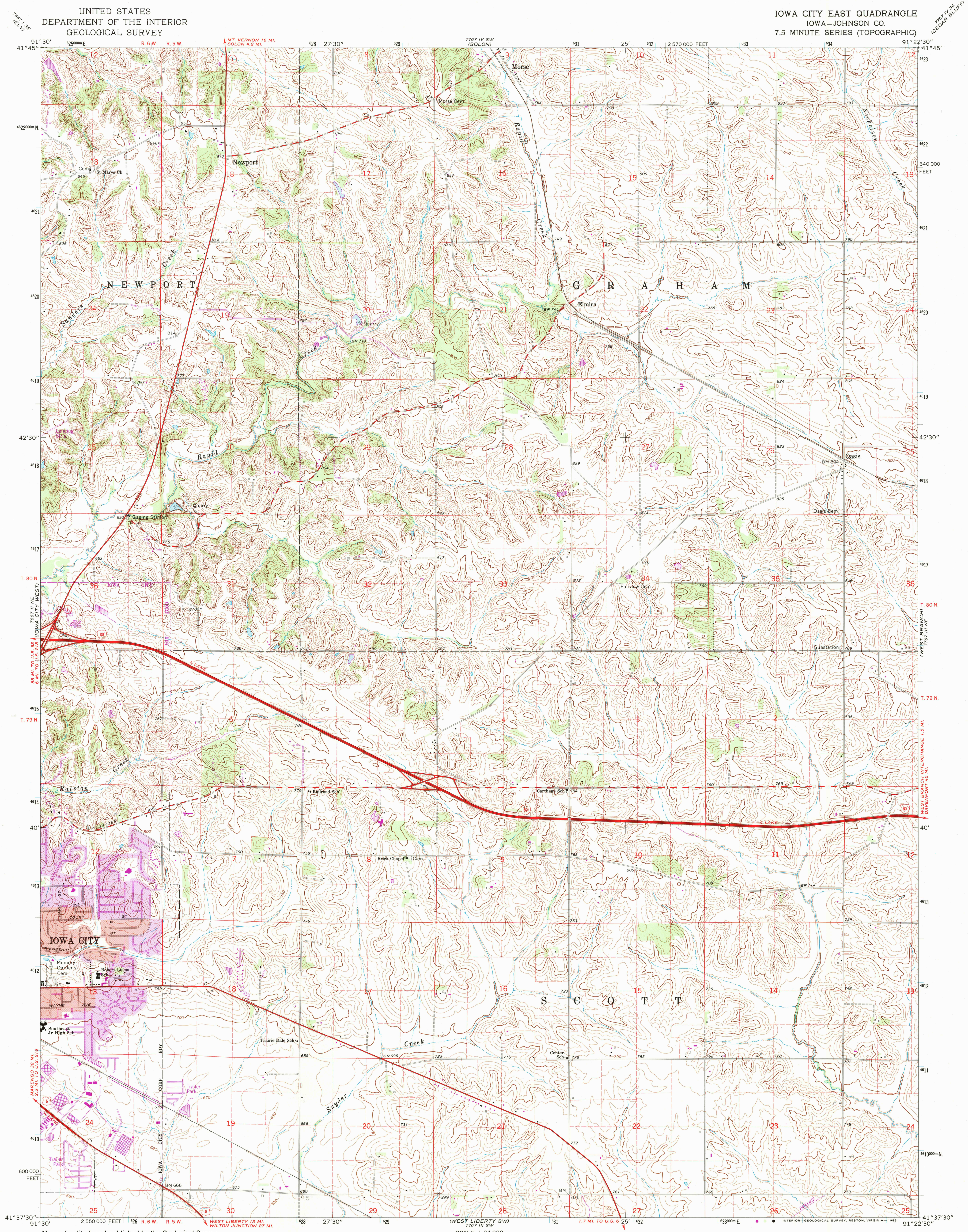


UNITED STATES
DEPARTMENT OF THE INTERIOR
GEOLOGICAL SURVEY

IOWA CITY EAST QUADRANGLE
IOWA-JOHNSON CO.
7.5 MINUTE SERIES (TOPOGRAPHIC)



Mapped, edited, and published by the Geological Survey
Control by USGS and NOS/NOAA
Topography by photogrammetric methods from aerial photographs
taken 1963. Field checked 1965
Polyconic projection. 10,000-foot grid ticks based on Iowa
coordinate system, south zone. 1000-meter Universal Transverse
Mercator grid ticks, zone 15, shown in blue. 1927 North American
Datum. To place on the predicted North American Datum 1983
move the projection lines 3 meters north and 13 meters east as shown
by dashed corner ticks
Red tint indicates areas in which only landmark buildings are shown
Fine red dashed lines indicate selected fence and lines where
generally visible on aerial photographs. This information is unchecked
Revisions shown in purple and woodland compiled from
aerial photographs taken 1980 and other sources. This
information not field checked. Map edited 1983
Purple tint indicates extension of urban areas

UTM GRID AND 1983 MAGNETIC NORTH
DECLINATION AT CENTER OF SHEET

SCALE 1:24,000
1 1000 0 1000 2000 3000 4000 5000 6000 7000 FEET
1 5 10 15 20 25 30 35 40 45 50 55 60 65 70 75 80 85 90 95 100 METERS
CONTOUR INTERVAL 10 FEET
NATIONAL GEODETIC VERTICAL DATUM OF 1929



ROAD CLASSIFICATION
Heavy-duty ——— Light-duty ———
Medium-duty ——— Unimproved dirt ———
Interstate Route U.S. Route State Route

IOWA CITY EAST, IOWA
41091-F4-TF-024
1965
PHOTOREVISED 1983
DMA 7767 III NW-SERIES V876