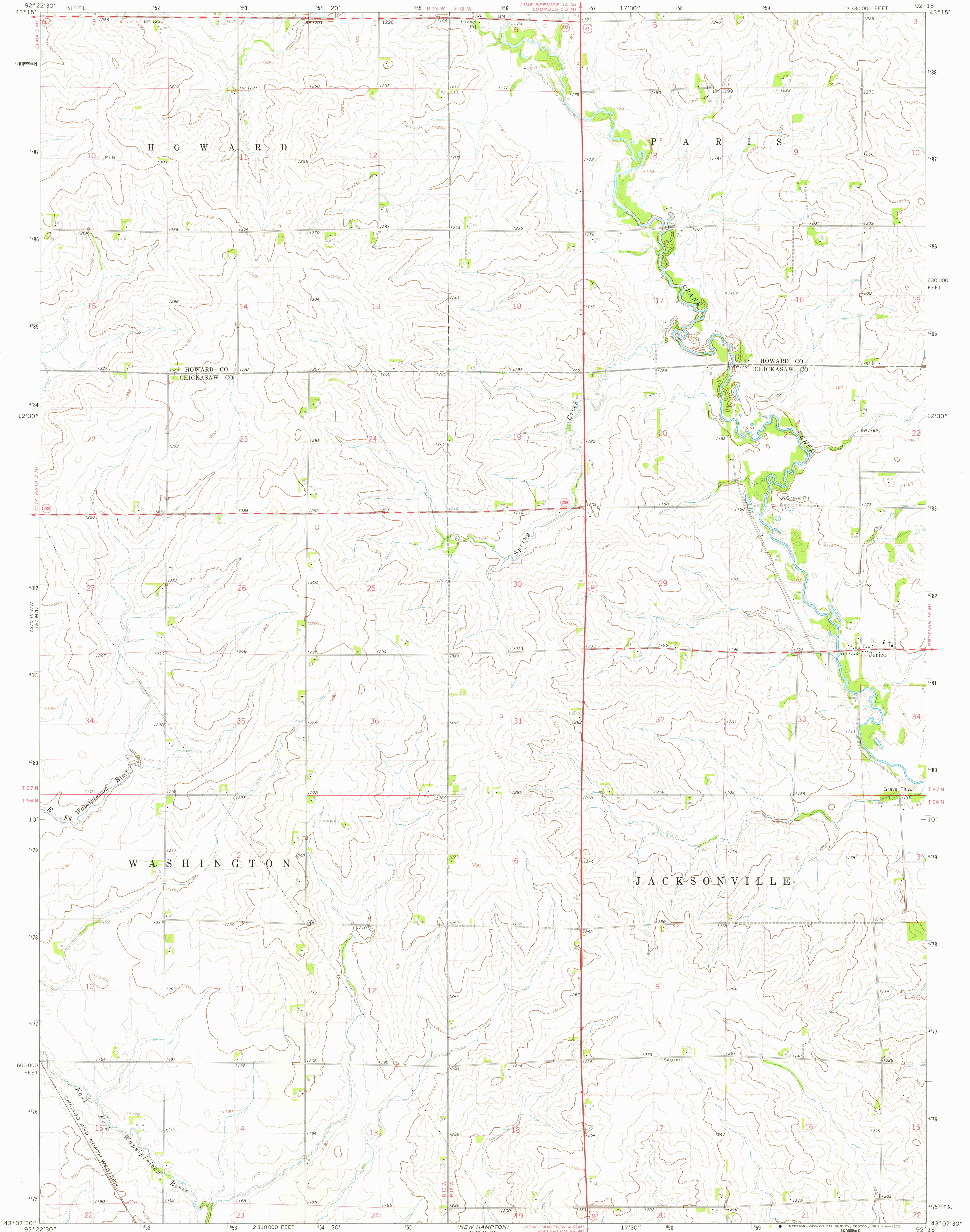


UNITED STATES
DEPARTMENT OF THE INTERIOR
GEOLOGICAL SURVEY

JERICO QUADRANGLE
IOWA
7.5 MINUTE SERIES (TOPOGRAPHIC)



Mapped, edited, and published by the Geological Survey
Control by USGS and NOS/NOAA

Topography by photogrammetric methods from aerial
photographs taken 1970. Field checked 1972

Projection and 10,000-foot grid ticks: Iowa coordinate
system, north zone (Lambert conformal conic)
1000-metre Universal Transverse Mercator grid ticks,
zone 15, shown in blue. 1927 North American datum

Fine red dashed lines indicate selected fence and field lines where
generally visible on aerial photographs. This information is unchecked

UTM GRID AND 1972 MAGNETIC NORTH
DECLINATION AT CENTER OF SHEET

SCALE 1:24,000
CONTOUR INTERVAL 10 FEET
NATIONAL GEODETIC VERTICAL DATUM OF 1929

THIS MAP COMPLIES WITH NATIONAL MAP ACCURACY STANDARDS
FOR SALE BY U. S. GEOLOGICAL SURVEY, DENVER, COLORADO 80225, OR RESTON, VIRGINIA 22092
AND BY THE IOWA GEOLOGICAL SURVEY, IOWA CITY, IOWA 52240
A FOLDER DESCRIBING TOPOGRAPHIC MAPS AND SYMBOLS IS AVAILABLE ON REQUEST



ROAD CLASSIFICATION
Primary highway,
hard surface
Secondary highway,
hard surface
Light-duty road, hard or
improved surface
Unimproved road
Interstate Route
U. S. Route
State Route

USGS
HISTORICAL FILE
TOPOGRAPHIC DIVISION

JERICO, IOWA
N4307.5-W9215.7.5
1972

MAR 3 1976

AMS 750 III NE-SERIES 876