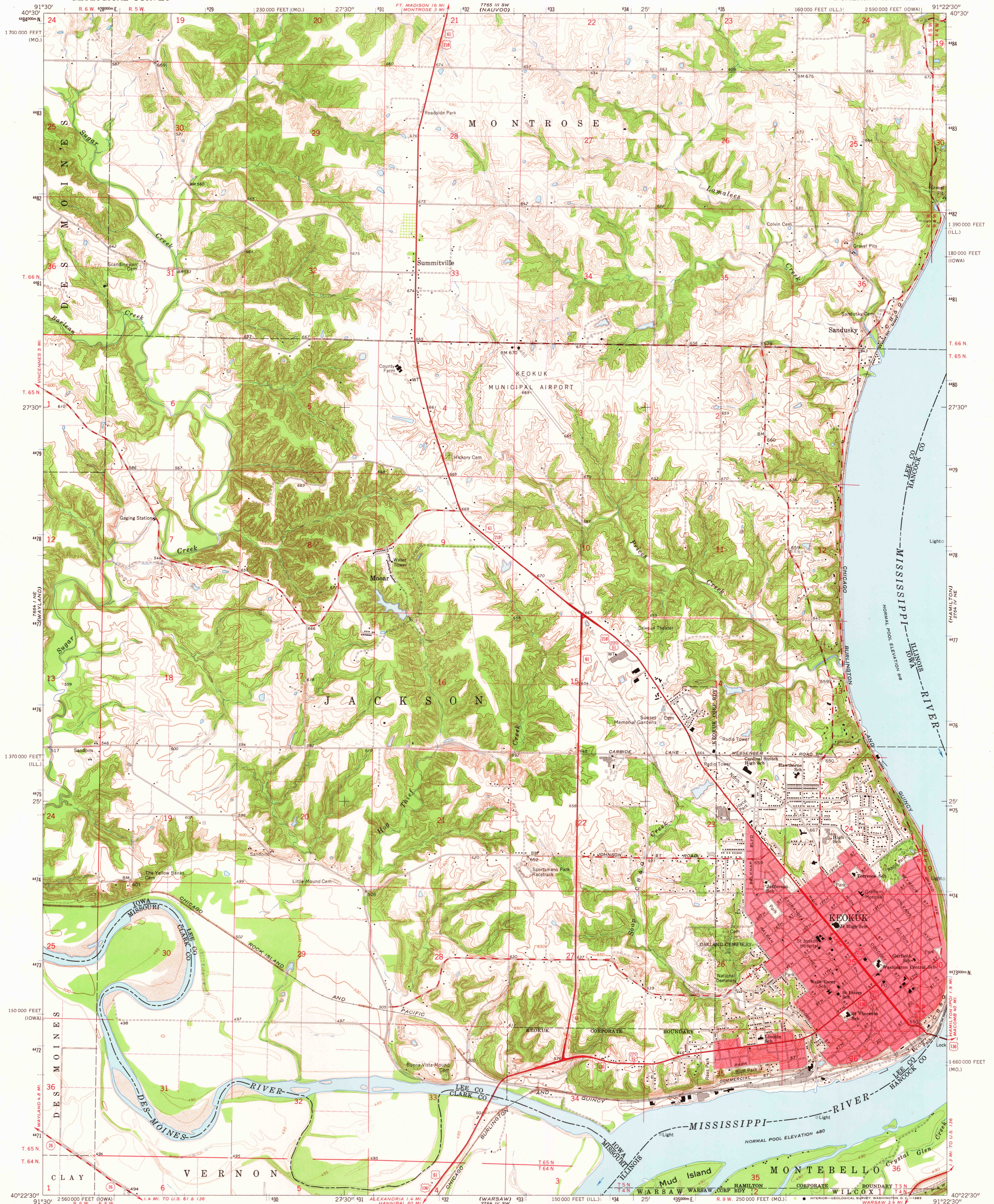


UNITED STATES
DEPARTMENT OF THE INTERIOR
GEOLOGICAL SURVEY

KEOKUK QUADRANGLE
IOWA-MISSOURI-ILLINOIS
7.5 MINUTE SERIES (TOPOGRAPHIC)
NW/4 KEOKUK 15' QUADRANGLE



Mapped, edited, and published by the Geological Survey
Control by USGS and USC&GS

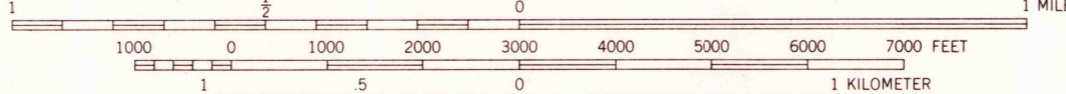
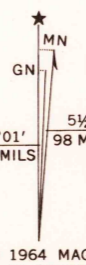
Topography by photogrammetric methods from aerial
photographs taken 1962. Field checked 1964

Polyconic projection. 1927 North American datum
10,000-foot grids based on Iowa coordinate system, south zone,
Missouri coordinate system, east zone, and Illinois
coordinate system, west zone

1000-meter Universal Transverse Mercator grid ticks,
zone 15, shown in blue

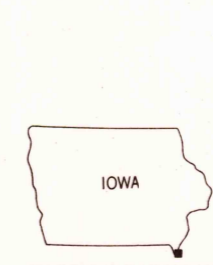
Red tint indicates area in which only landmark buildings are shown

Fine red dashed lines indicate selected fence and field lines where
generally visible on aerial photographs. This information is unchecked



CONTOUR INTERVAL 10 FEET
DOTTED LINES REPRESENT 5-FOOT CONTOURS
DATUM IS MEAN SEA LEVEL

THIS MAP COMPLIES WITH NATIONAL MAP ACCURACY STANDARDS
FOR SALE BY U. S. GEOLOGICAL SURVEY, DENVER, COLORADO 80225 OR WASHINGTON, D. C. 20242
IOWA GEOLOGICAL SURVEY, IOWA CITY, IOWA
MISSOURI GEOLOGICAL SURVEY, ROLLA, MISSOURI
AND BY THE STATE GEOLOGICAL SURVEY, URBANA, ILLINOIS
A FOLDER DESCRIBING TOPOGRAPHIC MAPS AND SYMBOLS IS AVAILABLE ON REQUEST



ROAD CLASSIFICATION
Heavy-duty ——— Light-duty ———
Medium-duty ——— Unimproved dirt ———
U. S. Route ——— State Route ———
USGS
Historical File
Topographic Division
KEOKUK, IOWA-MO.-ILL.
NW/4 KEOKUK 15' QUADRANGLE
N4022.5-W9122.5/7.5

1964
AMS 2764 IV NW-SERIES V863

U.S.G.S.
FILE COPY
TOPOGRAPHIC DIVISION

SEP 2 1965

3190