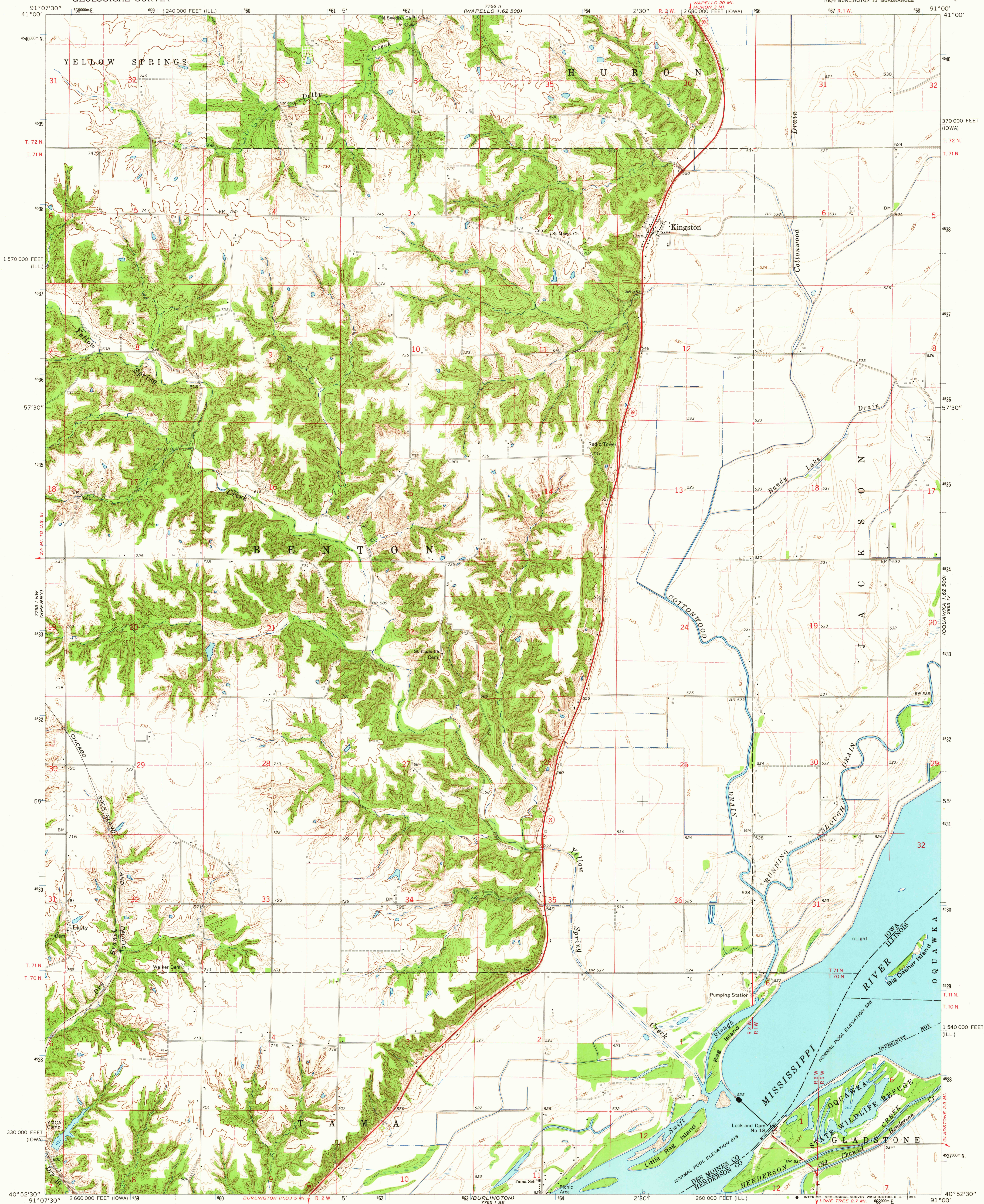


UNITED STATES
DEPARTMENT OF THE INTERIOR
GEOLOGICAL SURVEY

KINGSTON QUADRANGLE
IOWA-ILLINOIS
7.5 MINUTE SERIES (TOPOGRAPHIC)
NE 1/4 BURLINGTON 15' QUADRANGLE



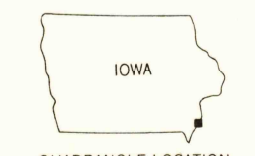
Mapped, edited, and published by the Geological Survey
Control by USGS and USC&GS
Topography by photogrammetric methods from aerial
photographs taken 1962 and planetable surveys 1964
Polyconic projection, 1927 North American datum
10,000-foot grids based on Iowa coordinate system, south zone,
and Illinois coordinate system, west zone
1000-meter Universal Transverse Mercator grid ticks,
zone 15, shown in blue
Fine red dashed lines indicate selected fence and field lines where
generally visible on aerial photographs. This information is unchecked

UTM GRID AND 1964 MAGNETIC NORTH
DECLINATION AT CENTER OF SHEET

SCALE 1:24 000
CONTOUR INTERVAL 10 FEET
DOTTED LINES REPRESENT 5-FOOT CONTOURS
DATUM IS MEAN SEA LEVEL

THIS MAP COMPLIES WITH NATIONAL MAP ACCURACY STANDARDS
FOR SALE BY U. S. GEOLOGICAL SURVEY, DENVER, COLORADO 80225 OR WASHINGTON, D. C. 20242,
AND STATE GEOLOGICAL SURVEY, IOWA CITY, IOWA,
AND STATE GEOLOGICAL SURVEY, URBANA, ILLINOIS
A FOLDER DESCRIBING TOPOGRAPHIC MAPS AND SYMBOLS IS AVAILABLE ON REQUEST

USGS
Historical File
Topographic Division



ROAD CLASSIFICATION
Heavy-duty — Light-duty
Medium-duty — Unimproved dirt
State Route

U.S.G.S. KINGSTON, IOWA-ILL.
NE 1/4 BURLINGTON 15' QUADRANGLE
N4052.5—W9100.7.5
1964
TOPOGRAPHIC DIVISION AMS 7765 1 NE—SERIES V876

2925