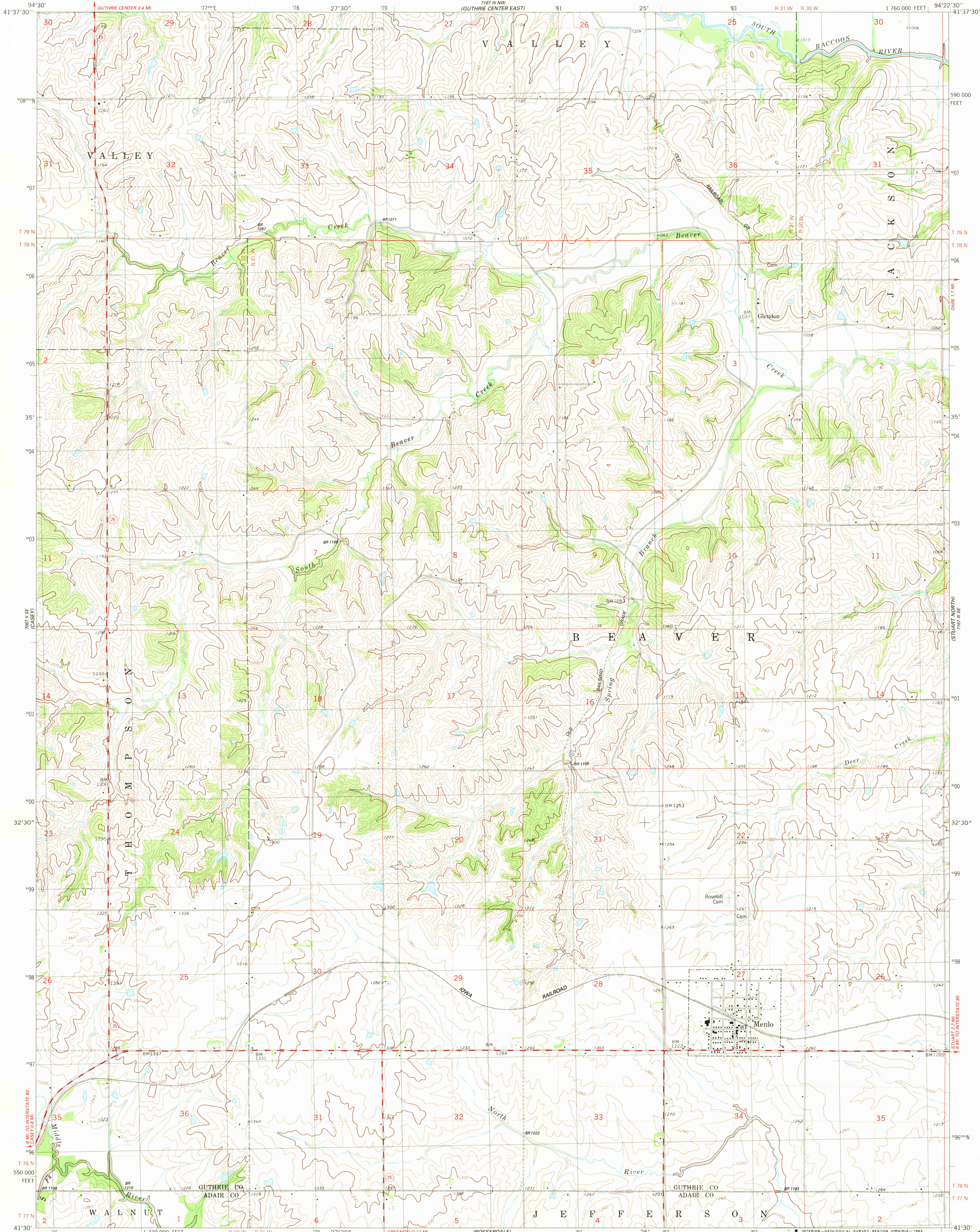


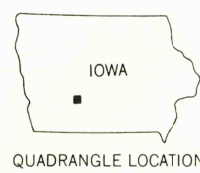
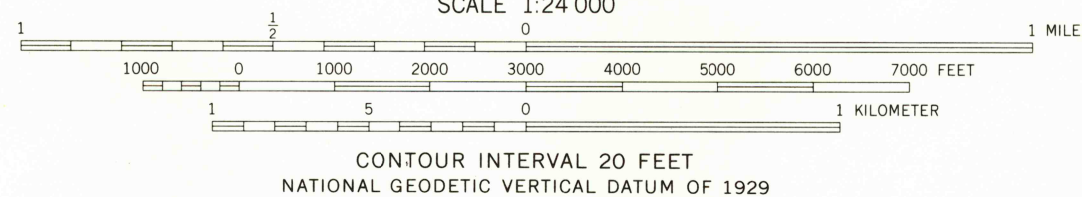
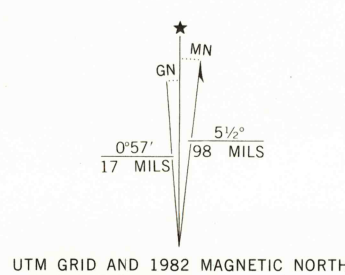
UNITED STATES  
DEPARTMENT OF THE INTERIOR  
GEOLOGICAL SURVEY

STATE OF IOWA  
IOWA GEOLOGICAL SURVEY

MENLO QUADRANGLE  
IOWA  
7.5 MINUTE SERIES (TOPOGRAPHIC)  
SW4 PANORA 15' QUADRANGLE



Mapped, edited, and published by the Geological Survey  
in cooperation with the Iowa Geological Survey  
Control by USGS and NOS/NOAA  
Topography by photogrammetric methods from aerial photographs  
taken 1979. Field checked 1980. Map edited 1982  
Projection and 10,000-foot grid ticks: Iowa coordinate  
system, south zone (Lambert conformal conic)  
1000-meter Universal Transverse Mercator grid, zone 15  
1927 North American Datum  
To place on the predicted North American Datum 1983  
move the projection lines 4 meters north and  
20 meters east as shown by dashed corner ticks  
Fine red dashed lines indicate selected fence and field lines where  
generally visible on aerial photographs. This information is unchecked



ROAD CLASSIFICATION  
Primary highway, hard surface  
Secondary highway, hard surface  
Interstate Route  
U. S. Route  
State Route  
Light-duty road, hard or improved surface  
Unimproved road

MENLO, IOWA  
SW4 PANORA 15' QUADRANGLE  
N4130-W9422.5/7.5

1982

DMA 7167 III SW-SERIES V876