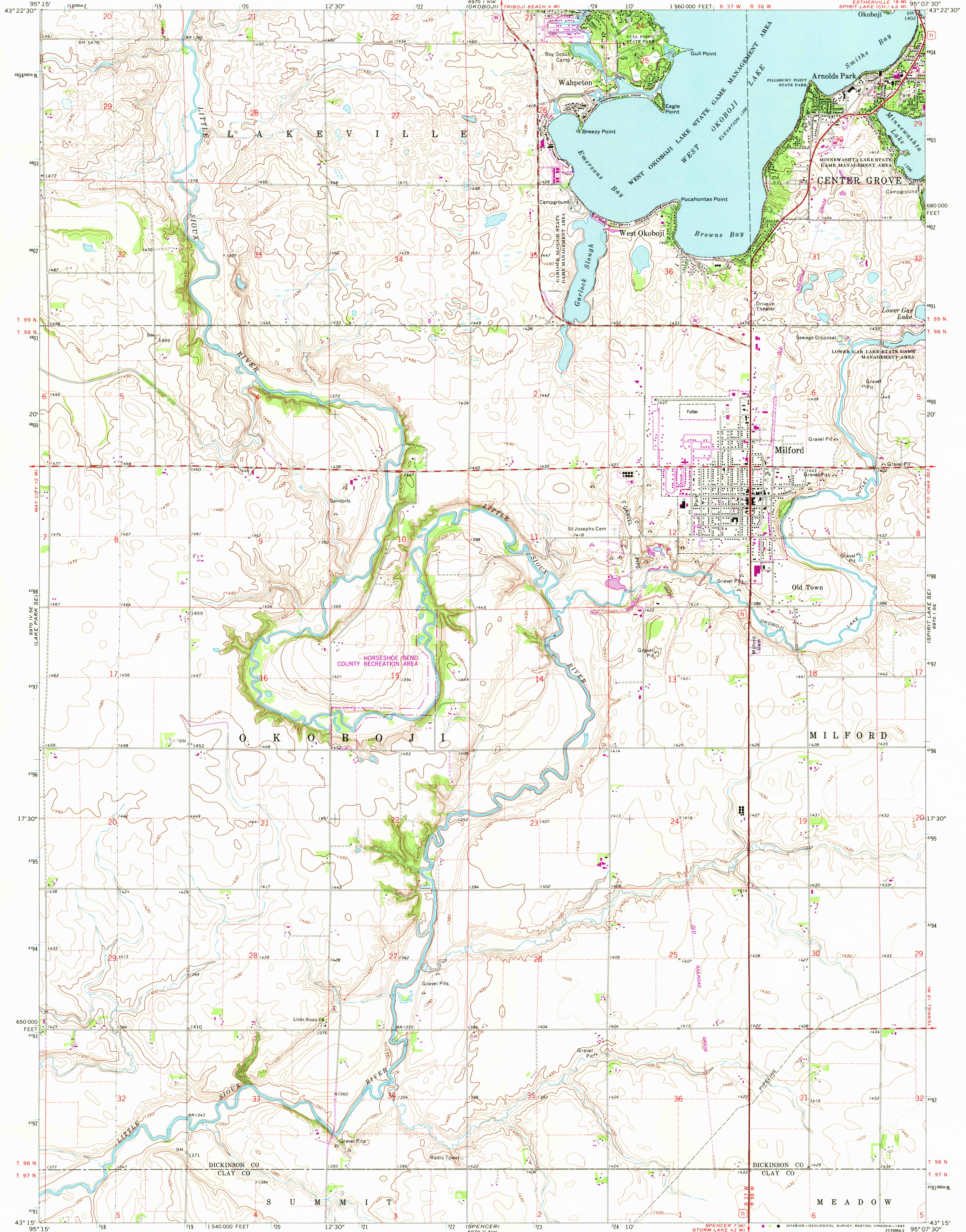


UNITED STATES
DEPARTMENT OF THE INTERIOR
GEOLOGICAL SURVEY

MILFORD QUADRANGLE
IOWA
7.5 MINUTE SERIES (TOPOGRAPHIC)



Mapped, edited, and published by the Geological Survey

Control by USGS and NOS/NOAA

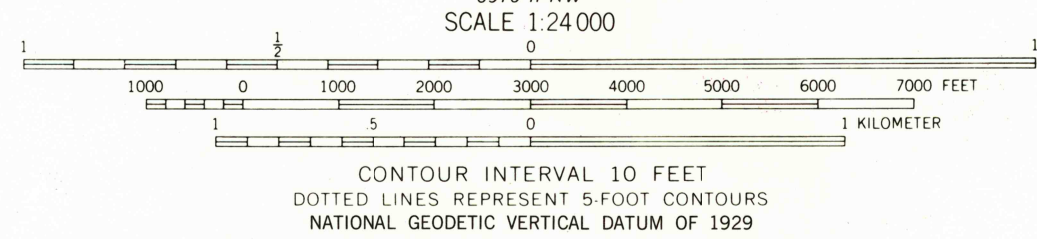
Topography by photogrammetric methods from aerial photographs taken 1966. Field checked 1970

Polycyclic projection. 10,000-foot grid ticks based on Iowa coordinate system, north zone. 1000-meter Universal Transverse Mercator grid ticks, zone 15, shown in blue 1927 North American Datum. To place on the predicted North American Datum 1983 move the projection lines 6 meters north and 22 meters east as shown by dashed corner ticks

Fine red dashed lines indicate selected fence and field lines where generally visible on aerial photographs. This information is unchecked

There may be private inholdings within the boundaries of the National or State reservations shown on this map

UTM GRID AND 1982 MAGNETIC NORTH DECLINATION AT CENTER OF SHEET



THIS MAP COMPLIES WITH NATIONAL MAP ACCURACY STANDARDS FOR SALE BY U.S. GEOLOGICAL SURVEY, DENVER, COLORADO 80225, OR RESTON, VIRGINIA 22092 AND BY THE IOWA GEOLOGICAL SURVEY, IOWA CITY, IOWA 52240 A FOLDER DESCRIBING TOPOGRAPHIC MAPS AND SYMBOLS IS AVAILABLE ON REQUEST



QUADRANGLE LOCATION

ROAD CLASSIFICATION	
Primary highway, all weather, hard surface	Light-duty road, all weather, improved surface
Secondary highway, all weather, hard surface	Unimproved road, fair or dry weather
U.S. Route	State Route

MILFORD, IOWA
N4315-W9507.5/7.5

1970
PHOTOREVISED 1982
DMA 6970 1 SW-SERIES V876

Revisions shown in purple and woodland compiled from aerial photographs taken 1980 and other sources
This information not field checked. Map edited 1982

SEP 27 1985