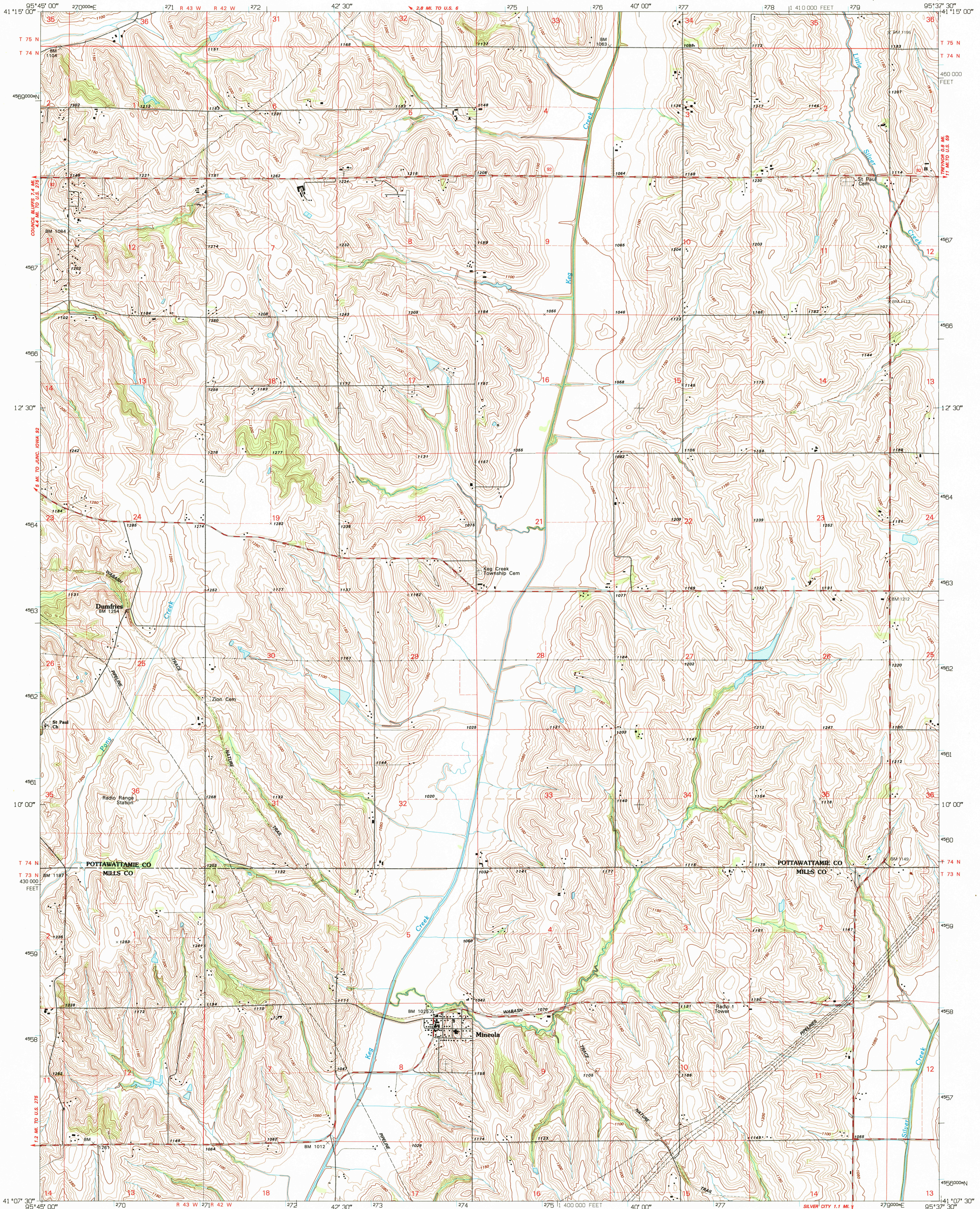
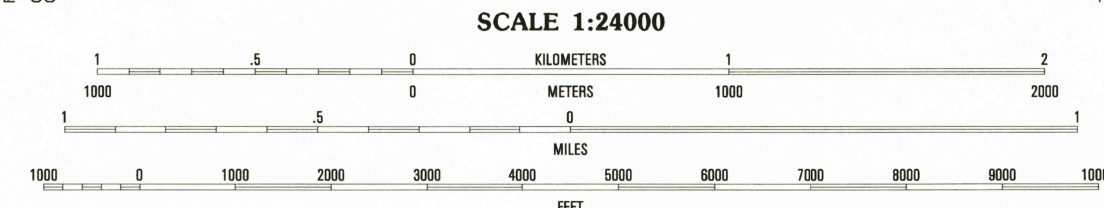
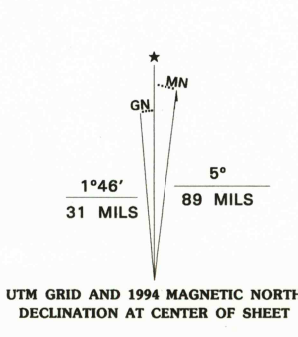


UNITED STATES  
DEPARTMENT OF THE INTERIOR  
GEOLOGICAL SURVEY

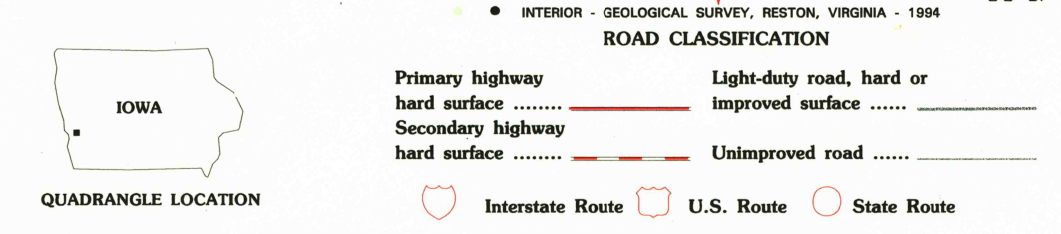
MINEOLA QUADRANGLE  
IOWA  
7.5 MINUTE SERIES (TOPOGRAPHIC)



Produced by the United States Geological Survey  
Control by USGS and NOS/NOAA  
Topography by photogrammetric methods from aerial photographs taken 1952. Field checked 1956. Revised from aerial photographs taken 1990. Field checked 1993. Map edited 1994  
Universal Transverse Mercator projection  
10,000-foot grid ticks: Iowa coordinate system, south zone 1000-meter Universal Transverse Mercator grid ticks, zone 15, shown in blue 1927 North American Datum (NAD 27)  
North American Datum of 1983 (NAD 83) is shown by dashed corner ticks. The values of the shift between NAD 27 and NAD 83 for 7.5-minute intersections are given in USGS Bulletin 1572  
Fine red dashed lines indicate selected fence and field lines where generally visible on aerial photographs. This information is unchecked



CONTOUR INTERVAL 10 FEET  
NATIONAL GEODETIC VERTICAL DATUM OF 1929

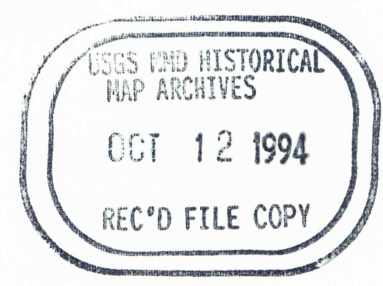


QUADRANGLE LOCATION

1	2	3	1 Council Bluffs North
2	3	4	2 McCalland
3	4	5	3 Taylor
4	5	6	4 Council Bluffs South
5	6	7	5 Tremor
6	7	8	6 Pacific Junction
7	8		7 Gleswood
8			8 Malvern

COMPLIES WITH U.S. GEOLOGICAL SURVEY STANDARDS FOR SPATIAL ACCURACY - CLASS 2  
FOR SALE BY U.S. GEOLOGICAL SURVEY DENVER, COLORADO 80225, OR RESTON, VIRGINIA 22092  
AND IOWA GEOLOGICAL SURVEY, IOWA CITY, IOWA 52240  
A FOLDER DESCRIBING TOPOGRAPHIC MAPS AND SYMBOLS IS AVAILABLE ON REQUEST

MINEOLA, IOWA  
41095-B6-TF-024  
1994



DMA 6866 II NW - SERIES V876