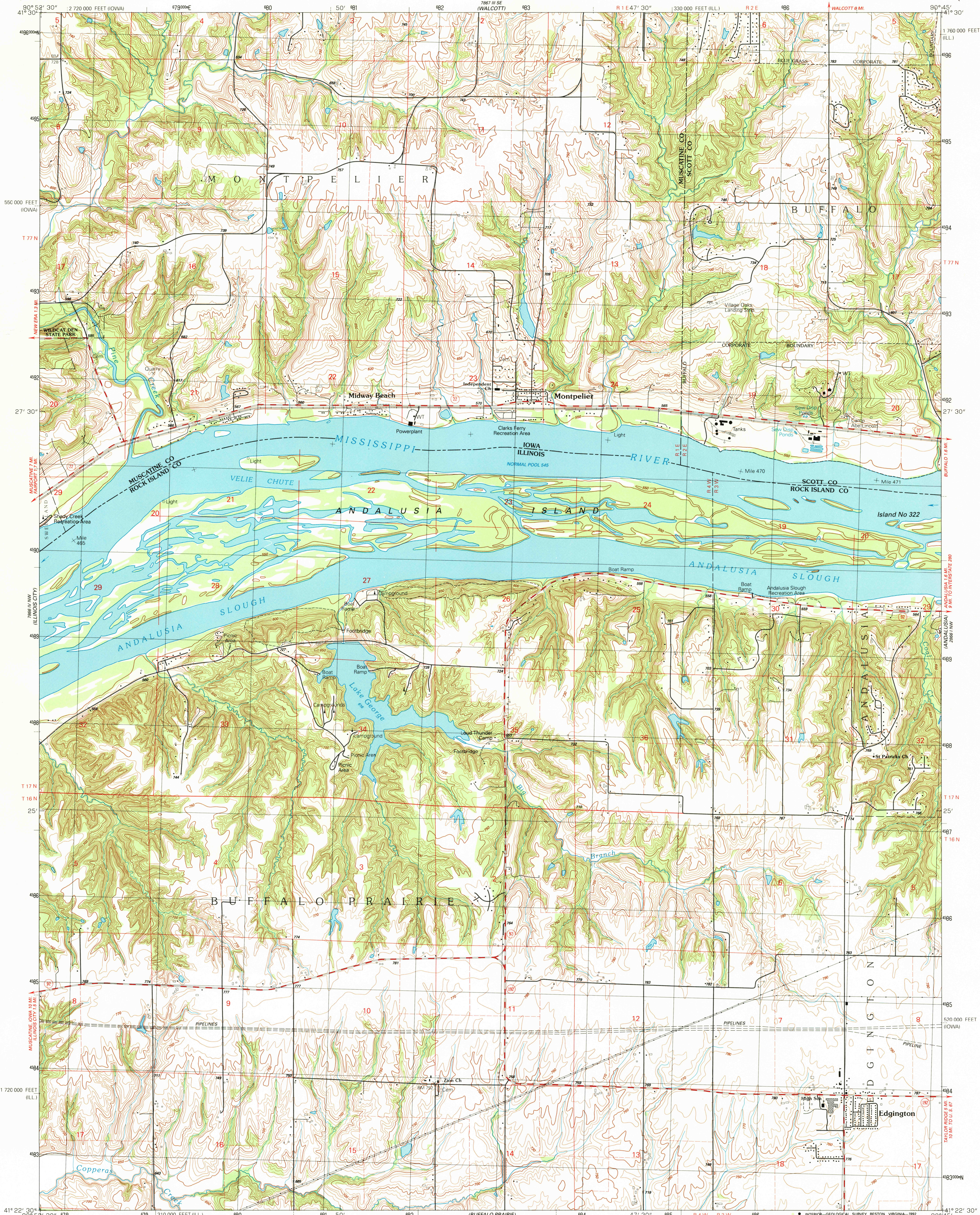
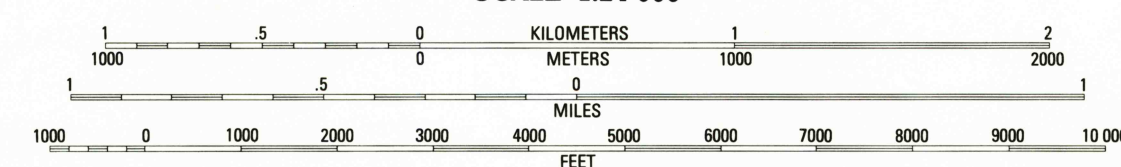
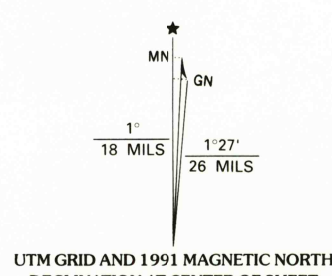


UNITED STATES
DEPARTMENT OF THE INTERIOR
GEOLOGICAL SURVEY

MONTPELIER QUADRANGLE
IOWA-ILLINOIS
7.5 MINUTE SERIES (TOPOGRAPHIC)
NE/4 EDGINGTON 15' QUADRANGLE



Produced by the United States Geological Survey
Control by USGS and NOS/NOAA
Compiled from aerial photographs taken 1984 and 1986
Field checked 1988. Map edited 1991
Projection: Illinois coordinate system, west zone (transverse Mercator)
10,000-foot grid ticks: Illinois coordinate system, west zone and Iowa coordinate system, south zone
1000-meter Universal Transverse Mercator grid, zone 15
1927 North American Datum
The difference between 1927 North American Datum and North American Datum of 1983 (NAD 83) for 7.5-minute intersections is given in USGS Bulletin 1875. The NAD 83 is shown by dashed corner ticks
There may be private inholdings within the boundaries of the National or State reservations shown on this map
Fine red dashed lines indicate selected fence and field lines where generally visible on aerial photographs. This information is unchecked



CONTOUR INTERVAL 10 FEET
NATIONAL GEODETIC VERTICAL DATUM OF 1929
THIS MAP COMPLIES WITH NATIONAL MAP ACCURACY STANDARDS
FOR SALE BY U.S. GEOLOGICAL SURVEY, DENVER, COLORADO 80225, OR RESTON, VIRGINIA 22092
IOWA GEOLOGICAL SURVEY, IOWA CITY, IOWA 52240
AND ILLINOIS GEOLOGICAL SURVEY, CHAMPAIGN, ILLINOIS 61820
A FOLDER DESCRIBING TOPOGRAPHIC MAPS AND SYMBOLS IS AVAILABLE ON REQUEST



QUADRANGLE LOCATION

ROAD CLASSIFICATION
Primary highway, hard surface Light-duty road, hard or improved surface
Secondary highway, hard surface Unimproved road
Interstate Route U. S. Route State Route

MONTPELIER, IOWA-ILL.
NE/4 EDGINGTON 15' QUADRANGLE
41090-D7-TF-024
1991
DMA 2866 IV NE-SERIES V863