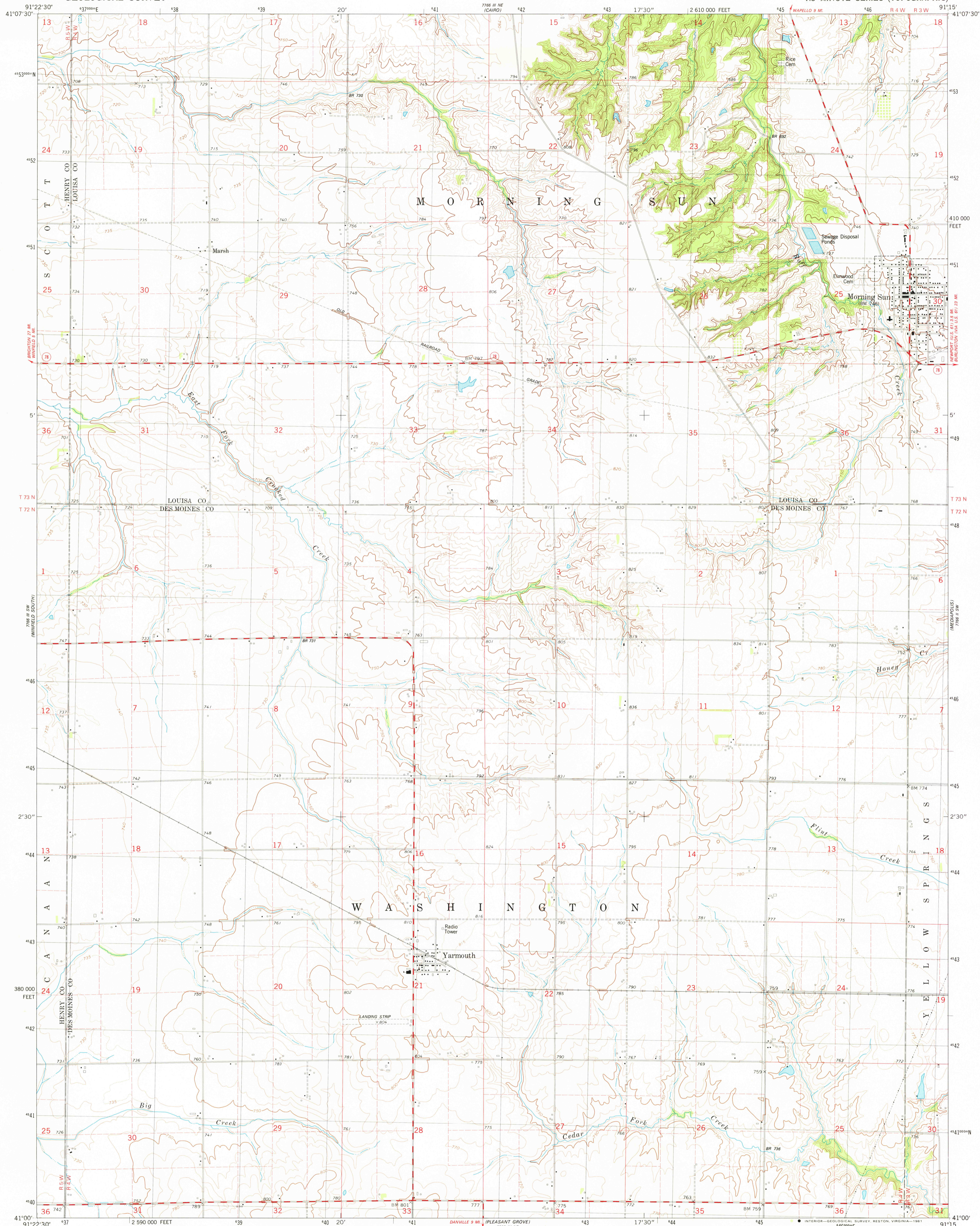


UNITED STATES  
DEPARTMENT OF THE INTERIOR  
GEOLOGICAL SURVEY

MORNING SUN QUADRANGLE  
IOWA  
7.5 MINUTE SERIES (TOPOGRAPHIC)



Mapped, edited, and published by the Geological Survey

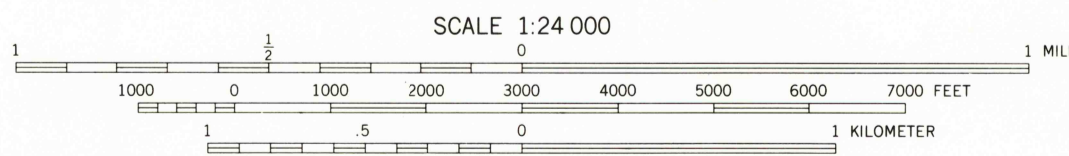
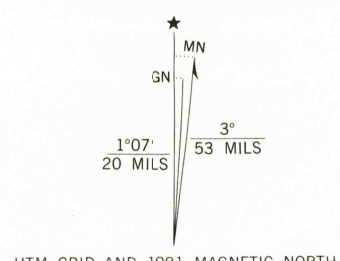
Control by USGS and NOS/NOAA

Topography by photogrammetric methods from aerial photographs taken 1973. Field checked 1976. Map edited 1981

Projection and 10,000-foot grid ticks: Iowa coordinate system, south zone (Lambert conformal conic)  
1000-meter Universal Transverse Mercator grid, zone 15  
1927 North American Datum

To place on the predicted North American Datum 1983 move the projection lines 2 meters north and 12 meters east as shown by dashed corner ticks

Fine red dashed lines indicate selected fence and field lines where generally visible on aerial photographs. This information is unchecked



CONTOUR INTERVAL 10 FEET  
DOTTED LINES REPRESENT 5-FOOT CONTOURS  
NATIONAL GEODETIC VERTICAL DATUM OF 1929

THIS MAP COMPLIES WITH NATIONAL MAP ACCURACY STANDARDS  
FOR SALE BY U. S. GEOLOGICAL SURVEY, DENVER, COLORADO 80225, OR RESTON, VIRGINIA 22092  
AND BY THE IOWA GEOLOGICAL SURVEY, IOWA CITY, IOWA 52240  
A FOLDER DESCRIBING TOPOGRAPHIC MAPS AND SYMBOLS IS AVAILABLE ON REQUEST



ROAD CLASSIFICATION	
Primary highway, hard surface	Light-duty road, hard or improved surface
Secondary highway, hard surface	Unimproved road
Interstate Route	U. S. Route
	State Route

MORNING SUN, IOWA  
N4100-W9115/7.5

1981

DMA 7766 III SE-SERIES V876