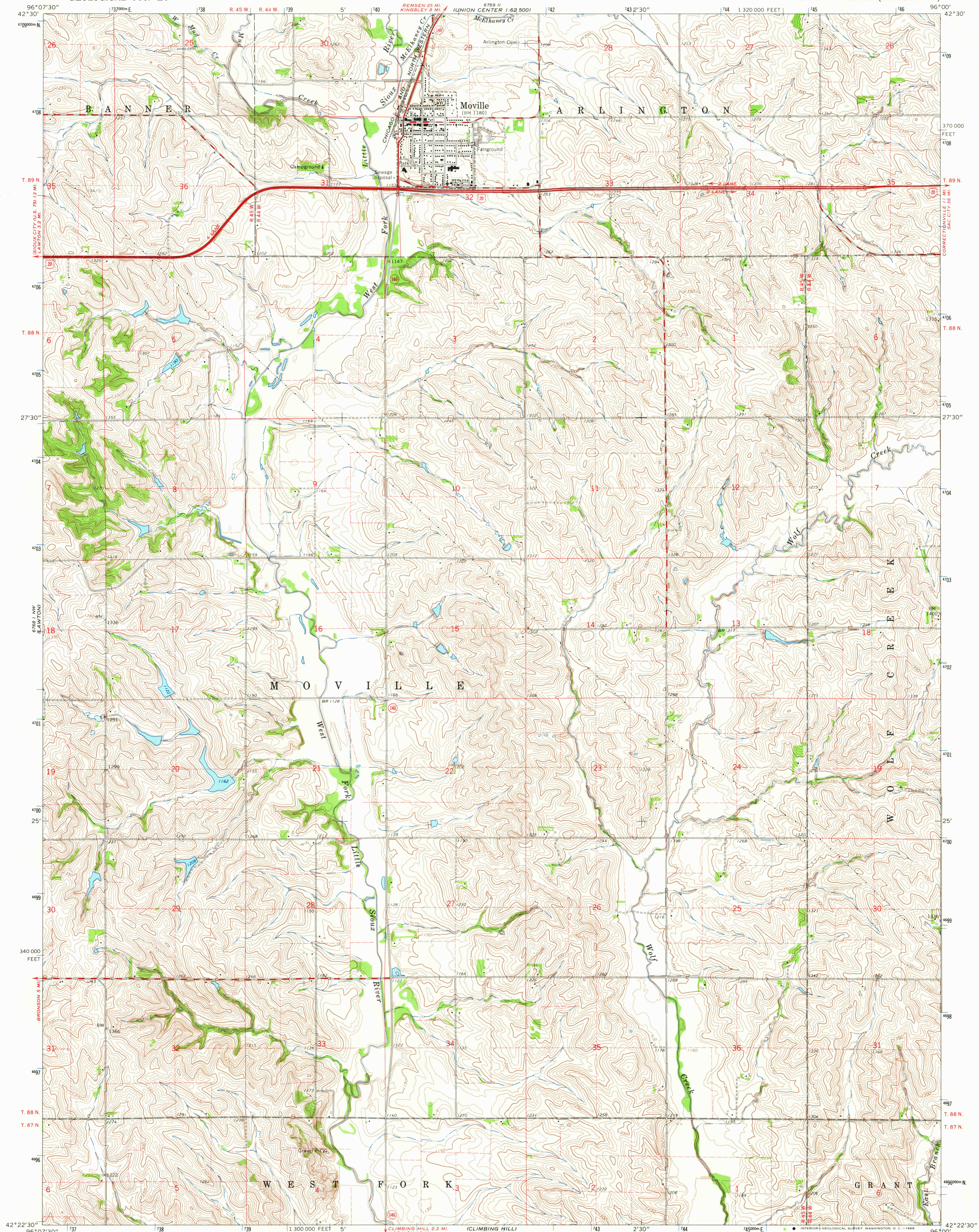


UNITED STATES  
DEPARTMENT OF THE INTERIOR  
GEOLOGICAL SURVEY

MOVILLE QUADRANGLE  
IOWA—WOODBURY CO.  
7.5 MINUTE SERIES (TOPOGRAPHIC)



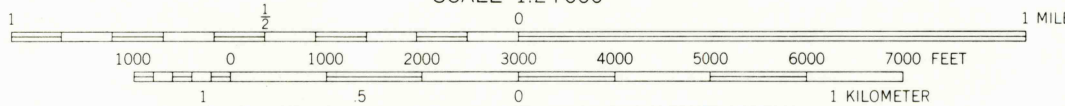
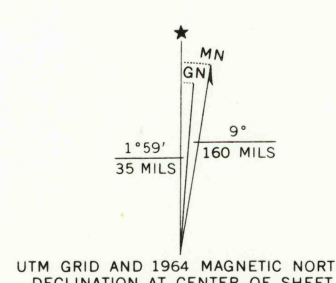
Mapped, edited, and published by the Geological Survey

Control by USGS and USC&GS

Topography by photogrammetric methods from aerial  
photographs taken 1962. Field checked 1964

Polyconic projection, 1927 North American datum  
10,000-foot grid based on Iowa coordinate system, north zone  
1000-meter Universal Transverse Mercator grid ticks,  
zone 14, shown in blue

Fine red dashed lines indicate selected fence and field lines where  
generally visible on aerial photographs  
This information is unchecked



CONTOUR INTERVAL 10 FEET  
DATUM IS MEAN SEA LEVEL

THIS MAP COMPLIES WITH NATIONAL MAP ACCURACY STANDARDS  
FOR SALE BY U.S. GEOLOGICAL SURVEY, DENVER, COLORADO 80225 OR WASHINGTON, D.C. 20242  
AND BY THE IOWA GEOLOGICAL SURVEY, IOWA CITY, IOWA  
A FOLDER DESCRIBING TOPOGRAPHIC MAPS AND SYMBOLS IS AVAILABLE ON REQUEST

USGS  
Historical File  
Topographic Division



ROAD CLASSIFICATION  
Heavy-duty ——— Light-duty ———  
Medium-duty ——— Unimproved dirt ———  
U.S. Route ——— State Route ———

U.S.G.S.

FILE COPY  
TOPOGRAPHIC DIVISION

MOVILLE, IOWA  
N4222.5—W9600/7.5

1964

AMS 6768 I NE—SERIES V876

2220  
MAR 25 1966