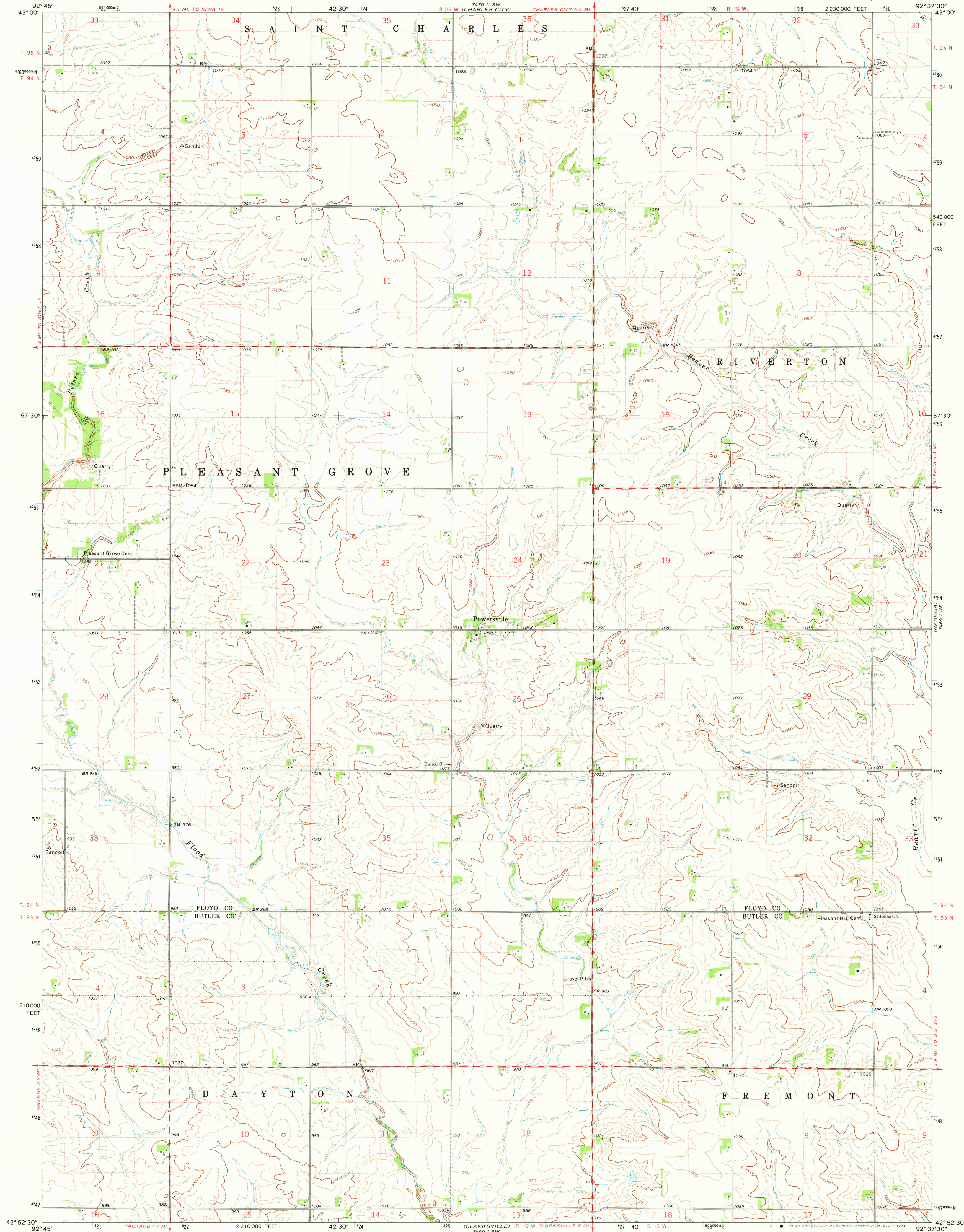


240 15 E  
(ROSEVILLE)

UNITED STATES  
DEPARTMENT OF THE INTERIOR  
GEOLOGICAL SURVEY

NASHUA NW QUADRANGLE  
IOWA  
7.5 MINUTE SERIES (TOPOGRAPHIC)

270 15 E  
(BASE 17)



Mapped, edited, and published by the Geological Survey

Control by USGS and USC&GS

Topography by photogrammetric methods from aerial

photographs taken 1967. Field checked 1971

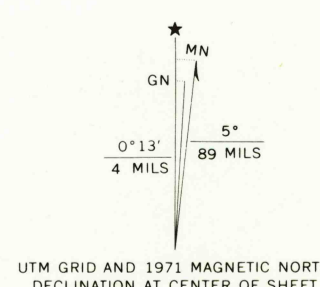
Polyconic projection. 1927 North American datum

10,000-foot grid based on Iowa coordinate system, north zone

1000-meter Universal Transverse Mercator grid ticks,

zone 15, shown in blue

Fine red dashed lines indicate selected fence and field lines where generally visible on aerial photographs. This information is unchecked



CONTOUR INTERVAL 10 FEET

DATUM IS MEAN SEA LEVEL



QUADRANGLE LOCATION

ROAD CLASSIFICATION	
Primary highway, hard surface	Light-duty road, hard or improved surface
Secondary highway, hard surface	Unimproved road
Interstate Route	U. S. Route
	State Route

THIS MAP COMPLIES WITH NATIONAL MAP ACCURACY STANDARDS  
FOR SALE BY U. S. GEOLOGICAL SURVEY, DENVER, COLORADO 80225 OR WASHINGTON, D. C. 20242  
AND BY THE IOWA GEOLOGICAL SURVEY, IOWA CITY, IOWA 52240  
A FOLDER DESCRIBING TOPOGRAPHIC MAPS AND SYMBOLS IS AVAILABLE ON REQUEST

NASHUA NW, IOWA  
N4252.5—W9237.5/7.5

1971

AMS 7469 1 NW—SERIES W876

MAY 24 1973

2665