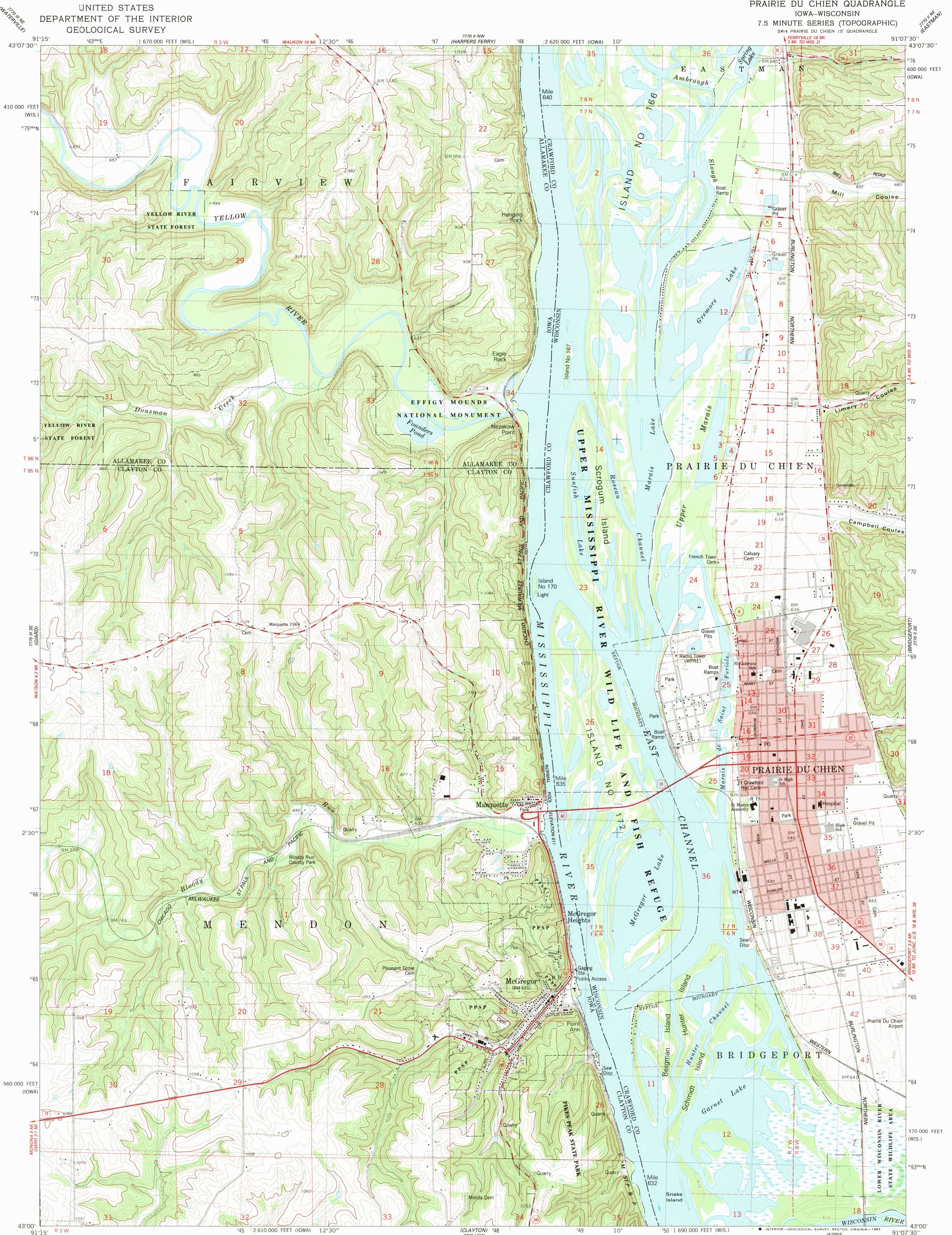
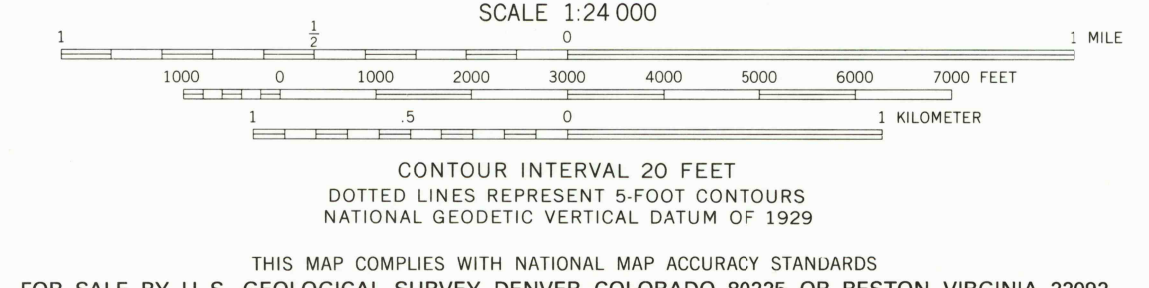
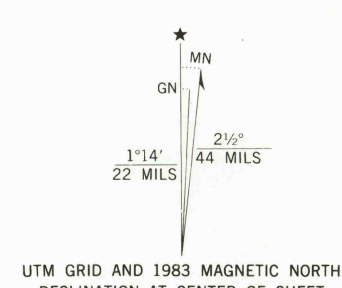


UNITED STATES
DEPARTMENT OF THE INTERIOR
GEOLOGICAL SURVEY

PRAIRIE DU CHIEN QUADRANGLE
IOWA-WISCONSIN
7.5 MINUTE SERIES (TOPOGRAPHIC)



Mapped, edited, and published by the Geological Survey in cooperation with the Wisconsin Division of Highways and Wisconsin Geological and Natural History Survey
Control by USGS and NOS/NOAA
Topography by photogrammetric methods from aerial photographs taken 1965 and planimetric surveys 1967
Revised from aerial photographs taken 1980-81
Field checked 1981. Map edited 1983
Projection: Iowa coordinate system, north zone (Lambert conformal conic)
10,000-foot grid ticks based on Iowa coordinate system north zone and Wisconsin coordinate system, south zone
1000-meter Universal Transverse Mercator grid, zone 15
1927 North American Datum
To place on the predicted North American Datum 1983 move the projection lines 5 meters north and 12 meters east as shown by dashed corner ticks
There may be private inholdings within the boundaries of the National or State reservations shown on this map
Red tint indicates area in which only landmark buildings are shown
Fine red dashed lines indicate selected fence and field lines where generally visible on aerial photographs. This information is unchecked



ROAD CLASSIFICATION

Primary highway, hard surface	Light-duty road, hard or improved surface
Secondary highway, hard surface	Unimproved road
Interstate Route	U. S. Route
	State Route

PRAIRIE DU CHIEN, IOWA-WIS.
SW 1/4 PRAIRIE DU CHIEN 15' QUADRANGLE
N4300-W9107.5/7.5

1983

DMA 7770 II SW-SERIES V876

NOV 15 1983