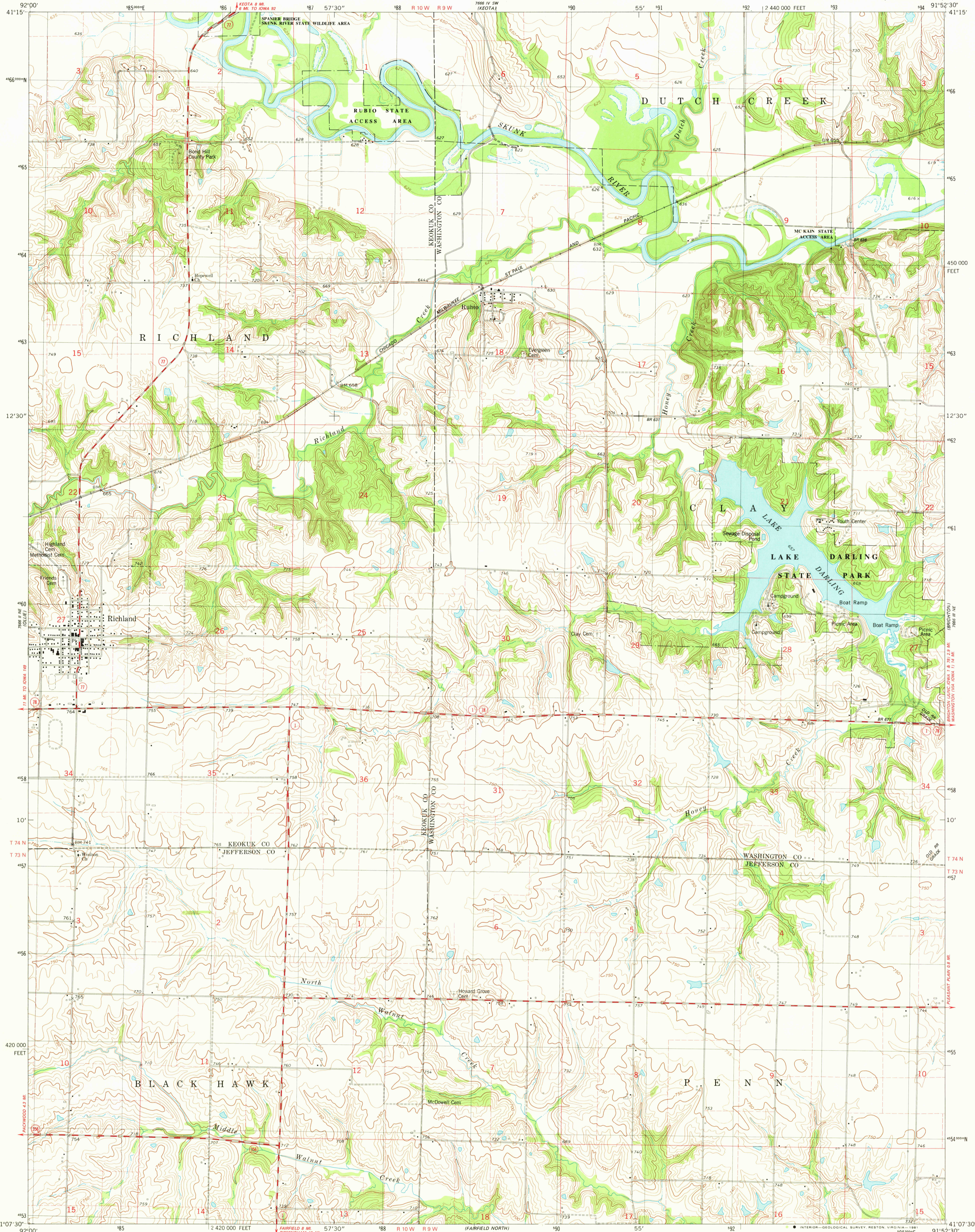
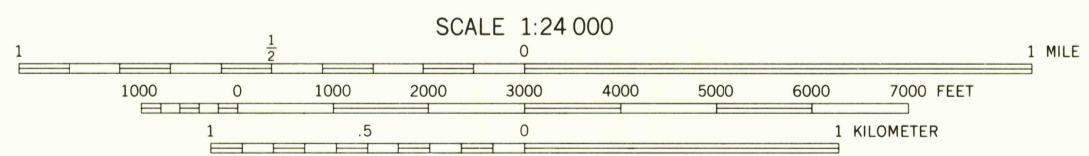


UNITED STATES  
DEPARTMENT OF THE INTERIOR  
GEOLOGICAL SURVEY

RICHLAND QUADRANGLE  
IOWA  
7.5 MINUTE SERIES (TOPOGRAPHIC)



Mapped, edited, and published by the Geological Survey  
Control by USGS and NOS/NOAA  
Topography by photogrammetric methods from aerial photographs  
taken 1973-74. Field checked 1976. Map edited 1980  
Projection and 10,000-foot grid ticks: Iowa coordinate  
system, south zone (Lambert conformal conic)  
1000-meter Universal Transverse Mercator grid, zone 15  
1927 North American Datum  
To place on the predicted North American Datum 1983  
move the projection lines 2 meters north and  
14 meters east as shown by dashed corner ticks  
There may be private inholdings within the boundaries of the  
National or State reservations shown on this map  
Fine red dashed lines indicate selected fence and field lines where  
generally visible on aerial photographs. This information is unchecked



THIS MAP COMPLIES WITH NATIONAL MAP ACCURACY STANDARDS  
FOR SALE BY U.S. GEOLOGICAL SURVEY, DENVER, COLORADO 80225, OR RESTON, VIRGINIA 22092  
AND BY THE IOWA GEOLOGICAL SURVEY, IOWA CITY, IOWA 52240  
A FOLDER DESCRIBING TOPOGRAPHIC MAPS AND SYMBOLS IS AVAILABLE ON REQUEST



ROAD CLASSIFICATION  
Primary highway, hard surface  
Secondary highway, hard surface  
Unimproved road  
Light-duty road, hard or improved surface  
Interstate Route  
U.S. Route  
State Route

USGS  
HISTORICAL FILE  
NATIONAL MAPPING DIVISION

RICHLAND, IOWA  
N4107.5-W9152.5/7.5  
1980  
DMA 7666 III NW-SERIES V876

JUL 20 1981  
1980