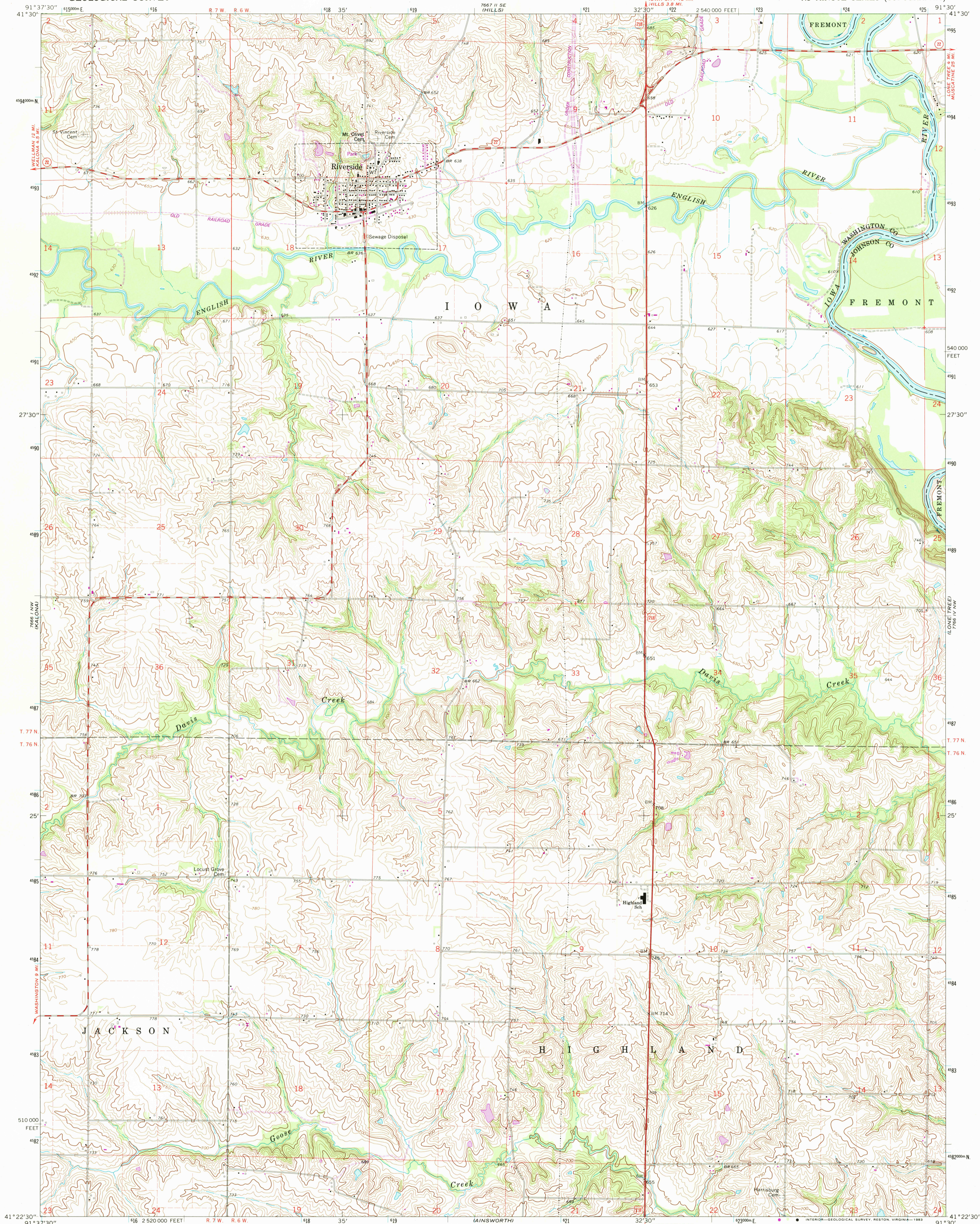


UNITED STATES
DEPARTMENT OF THE INTERIOR
GEOLOGICAL SURVEY

STATE OF IOWA
IOWA GEOLOGICAL SURVEY

RIVERSIDE QUADRANGLE
IOWA
7.5 MINUTE SERIES (TOPOGRAPHIC)



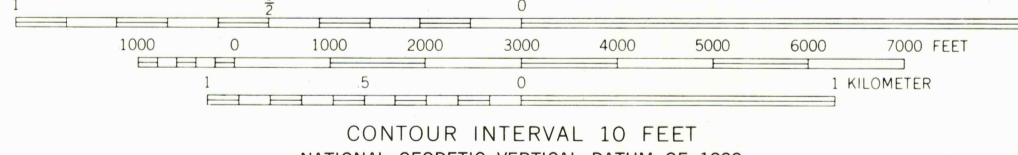
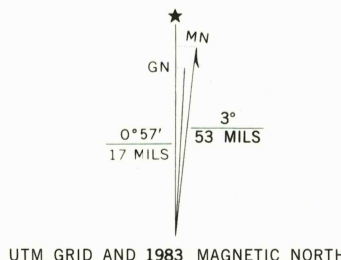
Mapped, edited, and published by the Geological Survey
Control by USGS and NOS/NOAA

Topography by photogrammetric methods from aerial photographs
taken 1967. Field checked 1969

Polyconic projection. 10,000-foot grid ticks based on Iowa
coordinate system, south zone. 1000-meter Universal Transverse
Mercator grid ticks, zone 15, shown in blue. 1927 North American
Datum. To place on the predicted North American Datum 1983
move the projection lines 3 meters north and 13 meters east as shown
by dashed corner ticks

Fine red dashed lines indicate selected fence and field lines where
generally visible on aerial photographs. This information is unchecked

Revisions shown in purple and woodland compiled from
aerial photographs taken 1980 and other sources. This
information not field checked. Map edited 1983



CONTOUR INTERVAL 10 FEET
NATIONAL GEODETIC VERTICAL DATUM OF 1929

THIS MAP COMPLIES WITH NATIONAL MAP ACCURACY STANDARDS
FOR SALE BY U.S. GEOLOGICAL SURVEY, DENVER, COLORADO 80225, OR RESTON, VIRGINIA 22092
AND BY THE IOWA GEOLOGICAL SURVEY, IOWA CITY, IOWA 52240
A FOLDER DESCRIBING TOPOGRAPHIC MAPS AND SYMBOLS IS AVAILABLE ON REQUEST



ROAD CLASSIFICATION	
Primary highway, all weather, hard surface	Light-duty road, all weather, improved surface
Secondary highway, all weather, hard surface	Unimproved road, fair or dry weather
U.S. Route	State Route

RETURN TO:
USGS NATIONAL MAP ARCHIVES
RESTON, VA 22092

RIVERSIDE, IOWA
41091-05-TF-024

1969
PHOTOREVISED 1983
DMA 7666 I NE - SERIES V876

DEC 30 1983