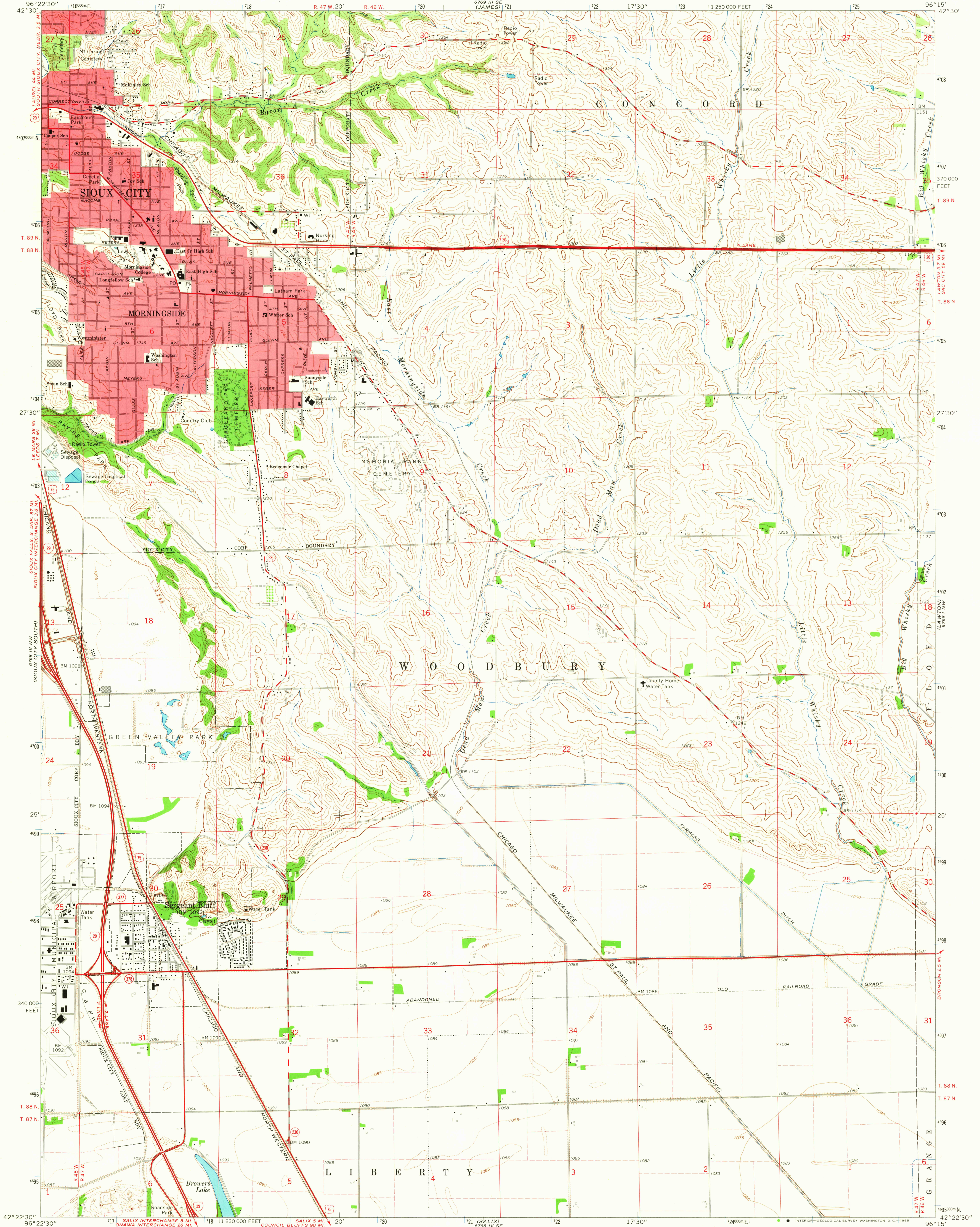


UNITED STATES  
DEPARTMENT OF THE INTERIOR  
GEOLOGICAL SURVEY

SERGEANT BLUFF QUADRANGLE  
IOWA—WOODBURY CO.  
7.5 MINUTE SERIES (TOPOGRAPHIC)

6769 1/4 SE  
(JAMES)  
162 500  
UNION CENTER



Mapped, edited, and published by the Geological Survey

Control by USGS and USC&GS

Topography by photogrammetric methods from aerial photographs taken 1961 and planetable surveys 1964

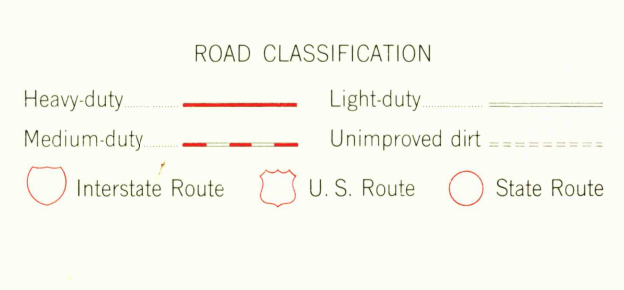
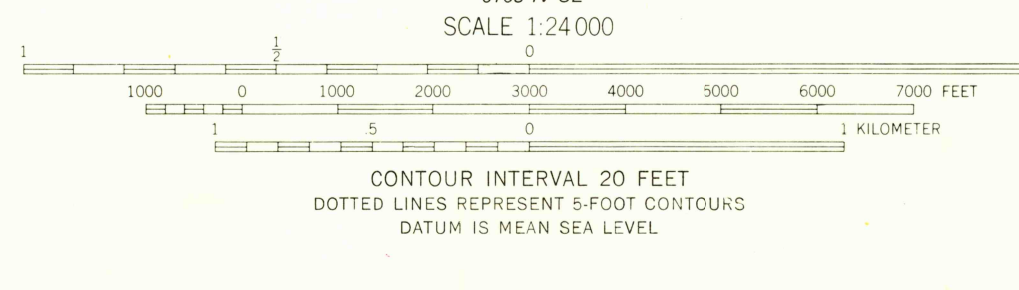
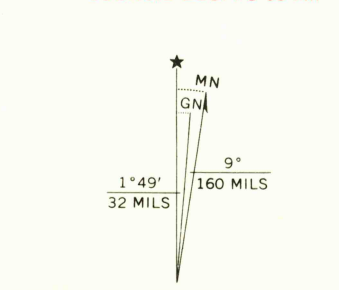
Polyconic projection. 1927 North American datum

10,000-foot grid based on Iowa coordinate system, north zone

1000-meter Universal Transverse Mercator grid ticks, zone 14, shown in blue

Red tint indicates areas in which only landmark buildings are shown

Fine red dashed lines indicate selected fence and field lines where generally visible on aerial photographs. This information is unchecked



DEC 17 1965  
2975

THIS MAP COMPLIES WITH NATIONAL MAP ACCURACY STANDARDS  
FOR SALE BY U.S. GEOLOGICAL SURVEY, DENVER, COLORADO 80225 OR WASHINGTON, D.C. 20242  
AND BY THE IOWA GEOLOGICAL SURVEY, IOWA CITY, IOWA  
A FOLDER DESCRIBING TOPOGRAPHIC MAPS AND SYMBOLS IS AVAILABLE ON REQUEST

SERGEANT BLUFF, IOWA  
N4222.5—W9615.7.5  
1964  
AMS 6768 IV NE—SERIES V876

U.S.G.S.  
FILE COPY  
TOPOGRAPHIC DIVISION