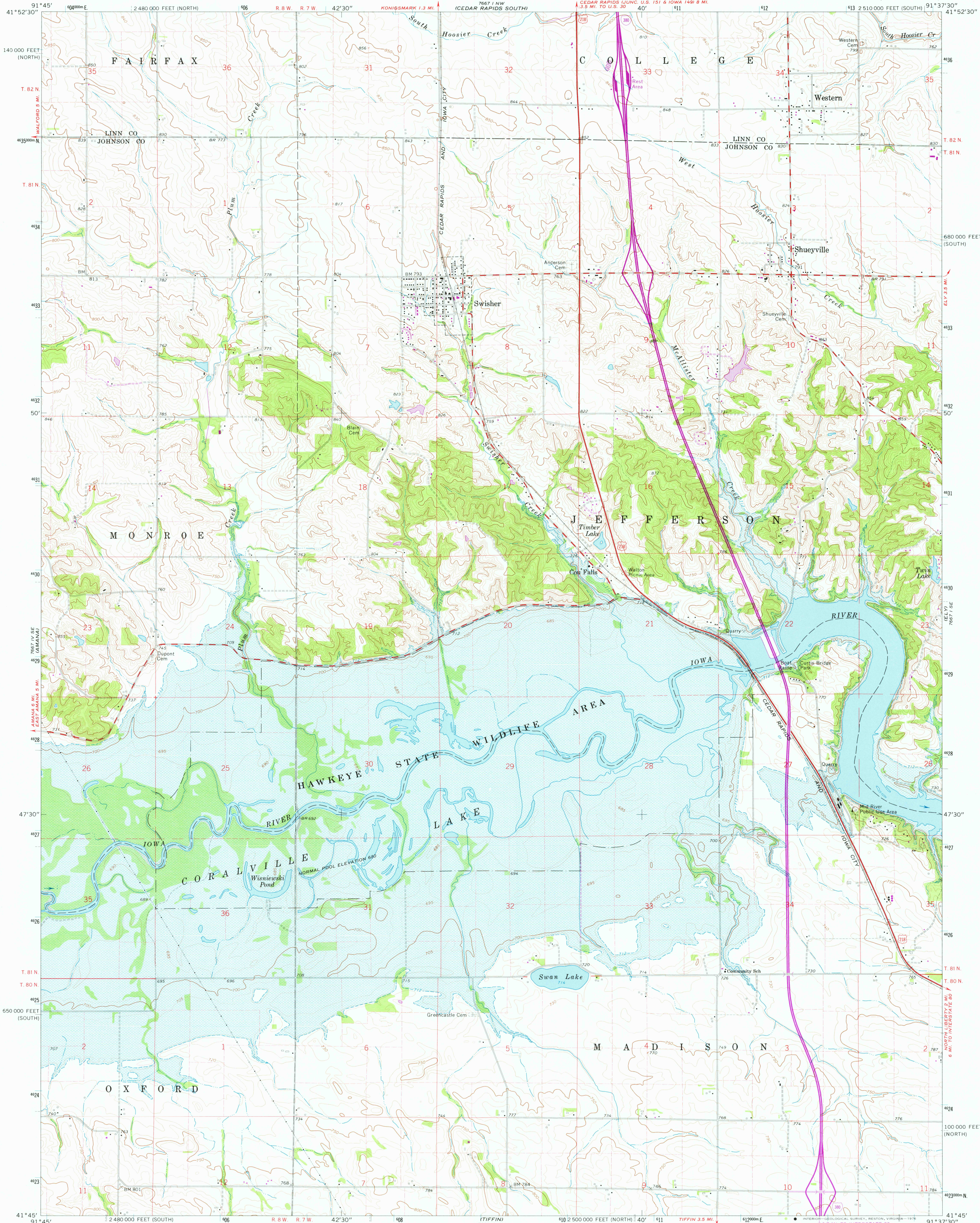


UNITED STATES
DEPARTMENT OF THE INTERIOR
GEOLOGICAL SURVEY

SWISHER QUADRANGLE
IOWA
7.5 MINUTE SERIES (TOPOGRAPHIC)



Mapped, edited, and published by the Geological Survey

Control by USGS, USC&GS, and Iowa Geodetic Survey

Topography by photogrammetric methods from aerial photographs taken 1965 and planetable surveys 1968

Polycyclic projection. 1927 North American datum

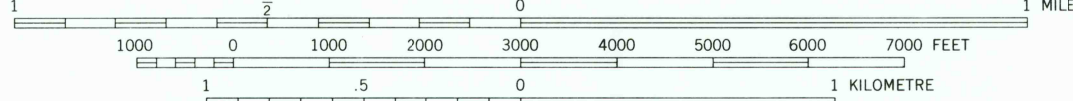
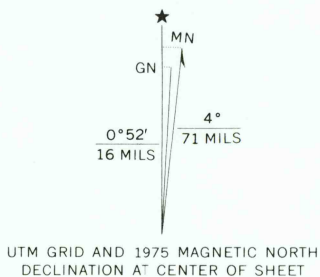
10,000-foot grids based on Iowa coordinate system, south and north zones

1000-metre Universal Transverse Mercator grid ticks, zone 15, shown in blue

Areas covered by dashed light-blue pattern are subject to controlled inundation

Fine red dashed lines indicate selected fence and field lines where generally visible on aerial photographs. This information is unchecked

Revisions shown in purple compiled from aerial photographs taken 1975. This information not field checked



CONTOUR INTERVAL 10 FEET
DOTTED LINES REPRESENT 5-FOOT CONTOURS
NATIONAL GEODETIC VERTICAL DATUM OF 1929

THIS MAP COMPLIES WITH NATIONAL MAP ACCURACY STANDARDS
FOR SALE BY U. S. GEOLOGICAL SURVEY, DENVER, COLORADO 80225, OR RESTON, VIRGINIA 22092
AND BY THE IOWA GEOLOGICAL SURVEY, IOWA CITY, IOWA 52240
A FOLDER DESCRIBING TOPOGRAPHIC MAPS AND SYMBOLS IS AVAILABLE ON REQUEST



ROAD CLASSIFICATION
Primary highway, all weather, hard surface
Secondary highway, all weather, hard surface
Light-duty road, all weather, improved surface
Unimproved road, fair or dry weather
U. S. Route
Interstate Route

USGS
Historical File
Topographic Division

SWISHER, IOWA
N4145—W9137.5/7.5
1968
PHOTOREVISED 1975
AMS 7667 I SW—SERIES V876

JAN 11 1977
2300