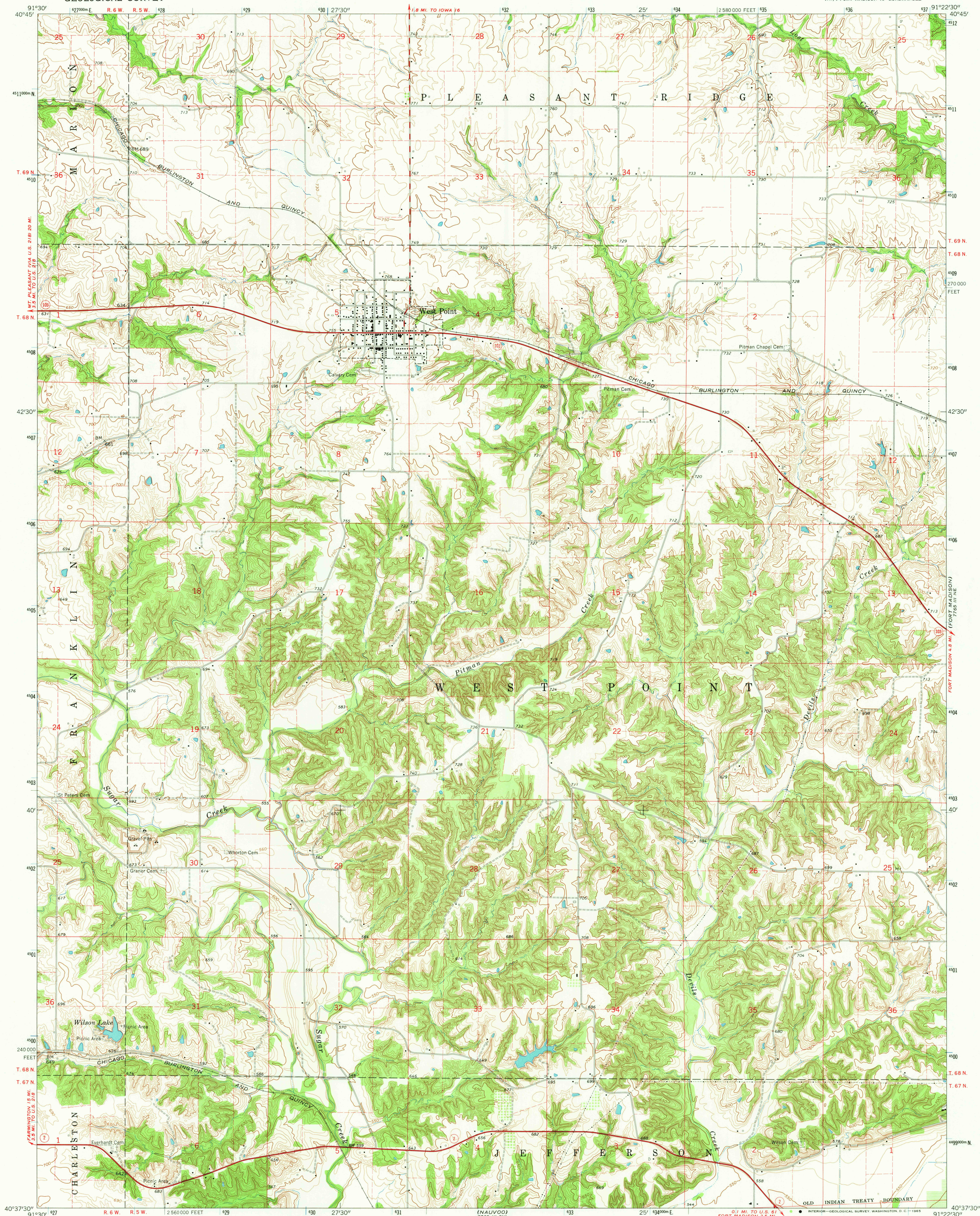
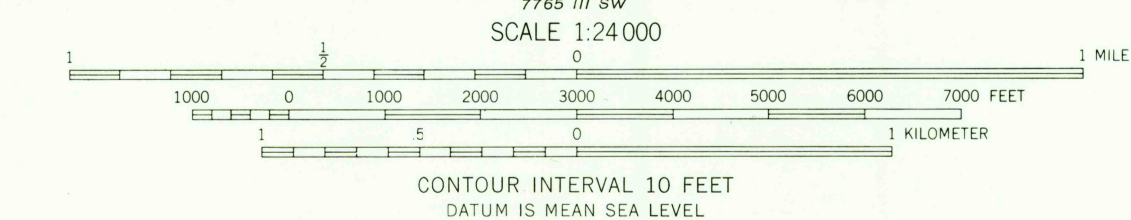
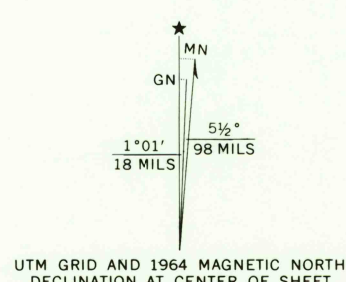


UNITED STATES  
DEPARTMENT OF THE INTERIOR  
GEOLOGICAL SURVEY

WEST POINT QUADRANGLE  
IOWA—LEE CO.  
7.5 MINUTE SERIES (TOPOGRAPHIC)  
NW 1/4 FORT MADISON 15' QUADRANGLE



Mapped, edited, and published by the Geological Survey  
Control by USGS and USC&GS  
Topography by photogrammetric methods from aerial  
photographs taken 1962. Field checked 1964  
Polyconic projection. 1927 North American datum  
10,000-foot grid based on Iowa coordinate system, south zone  
1000-meter Universal Transverse Mercator grid ticks,  
zone 15, shown in blue  
Fine red dashed lines indicate selected fence and field lines where  
generally visible on aerial photographs. This information is unchecked



USGS  
Historical File  
Topographic Division



ROAD CLASSIFICATION  
Heavy-duty ——— Light-duty ———  
Medium-duty ——— Unimproved dirt ———  
○ State Route

WEST POINT, IOWA  
NW 1/4 FORT MADISON 15' QUADRANGLE  
N4037.5—W9122.5/7.5

1964  
AMS 7765 III NW—SERIES V876

THIS MAP COMPLIES WITH NATIONAL MAP ACCURACY STANDARDS  
FOR SALE BY U.S. GEOLOGICAL SURVEY, DENVER, COLORADO 80225 OR WASHINGTON, D.C. 20422  
AND BY THE IOWA GEOLOGICAL SURVEY, IOWA CITY, IOWA  
A FOLDER DESCRIBING TOPOGRAPHIC MAPS AND SYMBOLS IS AVAILABLE ON REQUEST

AUG 6 1965  
2680