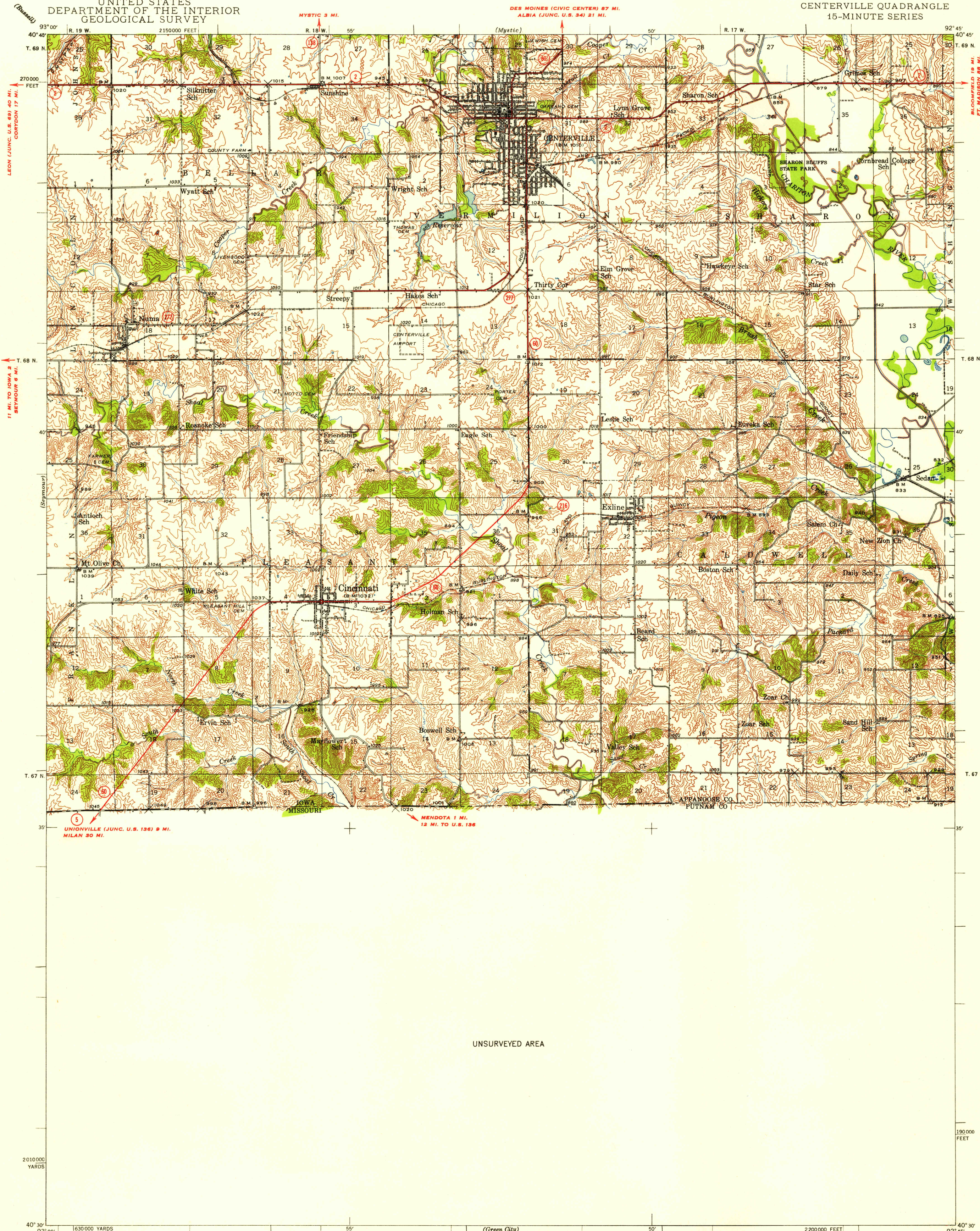


UNITED STATES
DEPARTMENT OF THE INTERIOR
GEOLOGICAL SURVEY

IOWA-MISSOURI
CENTERVILLE QUADRANGLE
15-MINUTE SERIES



FILE COPY

FILE COPY

UNSURVEYED AREA

Topography by W. E. Baird, Lloyd E. Marsden,
and W. Richard Kiel
Surveyed in 1938 and 1939

TRUE NORTH
MAGNETIC NORTH
APPROXIMATE MEAN
DECLINATION, 1938

SCALE 1:62,500
1 2 3 4 MILES
1 2 3 4 5 KILOMETERS
Contour interval 20 feet
Datum is mean sea level

INTERIOR—GEOLOGICAL SURVEY, WASHINGTON, D. C.—1954
Polyconic projection. 1927 North American datum
5000 yard grid based on U. S. zone system, C
10000 foot grid based on Iowa (South)
rectangular coordinate system

USGS
Historical File
Topographic Division

ROAD CLASSIFICATION
Heavy-duty ——— 4 LANE 16 LANE Light-duty ———
Medium-duty ——— 4 LANE 16 LANE Unimproved dirt ———
U. S. Route State Route

CENTERVILLE, IOWA

N4030—W9245/15

1939

FOR SALE BY U. S. GEOLOGICAL SURVEY, DENVER, COLORADO OR WASHINGTON 25, D. C.
BY THE MISSOURI GEOLOGICAL SURVEY, ROLLA, MISSOURI
AND BY THE IOWA GEOLOGICAL SURVEY, IOWA CITY, IOWA
A FOLDER DESCRIBING TOPOGRAPHIC MAPS AND SYMBOLS IS AVAILABLE ON REQUEST

JUL 20 1954