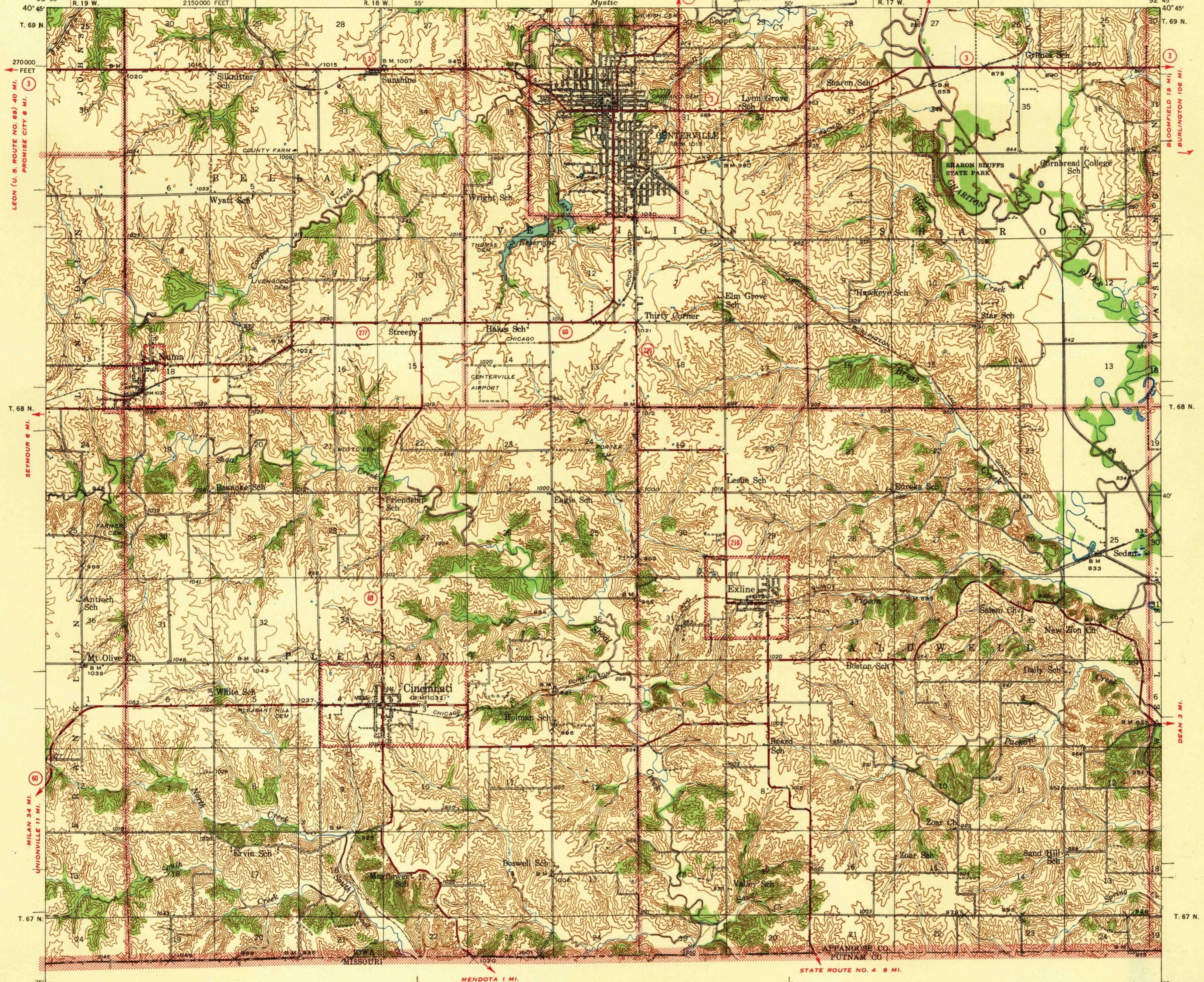


UNITED STATES
DEPARTMENT OF THE INTERIOR
GEOLOGICAL SURVEY

U. S. G. S.
FILE COPY
Inspection and Editing.

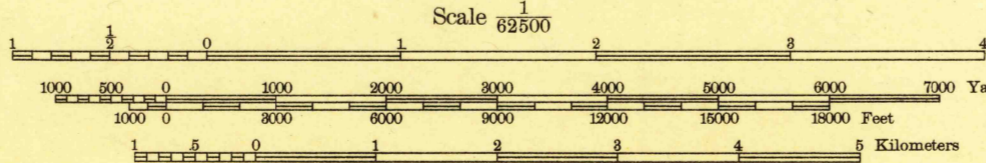
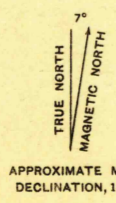
IOWA-MISSOURI
CENTERVILLE QUADRANGLE
15-MINUTE SERIES



UNSURVEYED AREA

U. S. G. S.
FILE COPY
Inspection and Editing.

Topography by W. E. Baird, Lloyd E. Marsden,
and W. Richard Kiel
Surveyed in 1938 and 1939



USGS
Historical File
Topographic Division

Preliminary edition 1941
2200000 FEET
Polyconic projection, 1927 North American datum
5000 yard grid based on U. S. zone system, C
10000 foot grid based on Iowa (South)
rectangular coordinate system

CENTERVILLE, IOWA-MO.
N4030-W9245/15

Contour interval 20 feet
Datum is mean sea level

ROUTES USUALLY TRAVELED
HARD IMPERVIOUS SURFACES
OTHER SURFACE IMPROVEMENTS
1940
(2) U. S. ROUTE (3) STATE ROUTE

JUL 26 1941