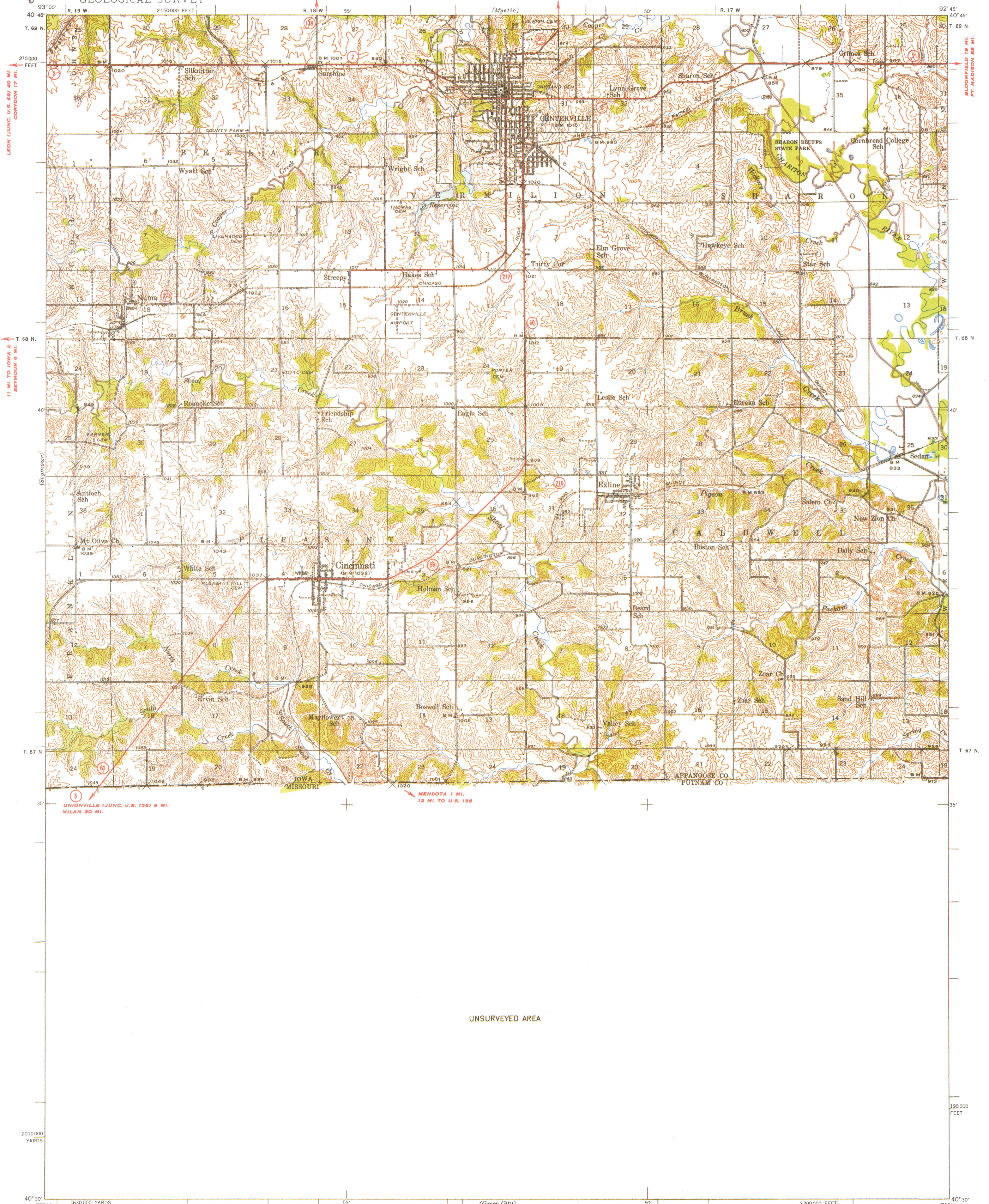


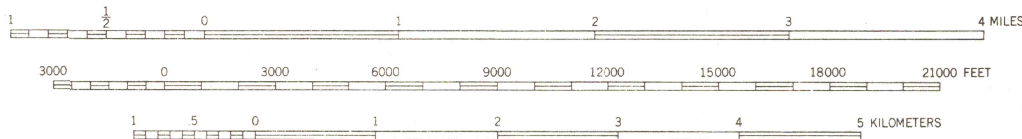
UNITED STATES
DEPARTMENT OF THE INTERIOR
GEOLOGICAL SURVEY

IOWA-MISSOURI
CENTERVILLE QUADRANGLE
15-MINUTE SERIES



Topography by W. E. Baird, Lloyd E. Marsden,
and W. Richard Kiel
Surveyed in 1938 and 1939

TRUE NORTH
MAGNETIC NORTH
APPROXIMATE MEAN
DECLINATION, 1938



Contour interval 20 feet
Datum is mean sea level

INTERIOR—GEOLOGICAL SURVEY, WASHINGTON, D. C.—1954
Polyconic projection, 1927 North American datum
5000 yard grid based on U. S. zone system, C
10000 foot grid based on Iowa (South)
rectangular coordinate system

ROAD CLASSIFICATION
Heavy-duty — LANE IS LANE Light-duty —
Medium-duty — LANE IS LANE Unimproved dirt —
U. S. Route State Route

CENTERVILLE, IOWA
N4030—W9245/15

1939

FOR SALE BY U. S. GEOLOGICAL SURVEY, DENVER, COLORADO OR WASHINGTON 25, D. C.
BY THE MISSOURI GEOLOGICAL SURVEY, ROLLA, MISSOURI
AND BY THE IOWA GEOLOGICAL SURVEY, IOWA CITY, IOWA
A FOLDER DESCRIBING TOPOGRAPHIC MAPS AND SYMBOLS IS AVAILABLE ON REQUEST

This was reproduced by electronic color scanning of an earlier printing (1954).

USGS
Historical File
Topographic Division

1000
DEC 30 1976