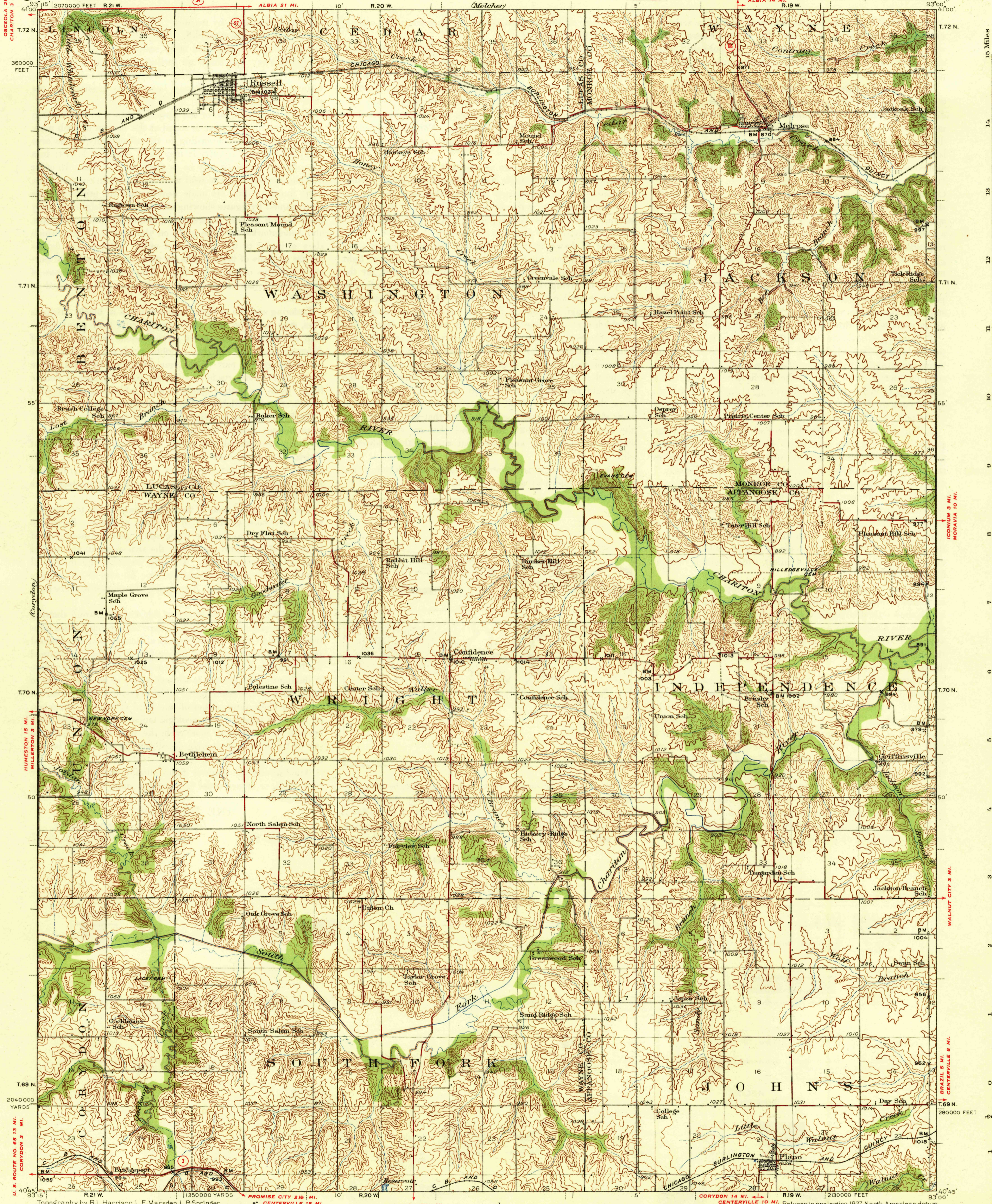


UNITED STATES
DEPARTMENT OF THE INTERIOR
GEOLOGICAL SURVEY

IOWA
RUSSELL QUADRANGLE



Topography by R.L. Harrison, L.E. Marsden, L.R. Springer,
E.R. Stiles, Stanley Kriz, Lawrence Lees, Robt. C. Herron,
J.R. Sanford, and C.W. Couser
Surveyed in 1934-1935

USGS
Historical File
Topographic Division

Scale 62500
1 2 3 4 Miles
5000 10000 15000 20000 Feet
1 2 3 4 5 Kilometers
Contour interval 20 feet
Datum is mean sea level

HARD IMPERVIOUSLY SURFACED ROADS
OTHER MAIN TRAVELED ROADS
1937
UNITED STATES ROUTE NUMBER
STATE ROUTE NUMBER

RUSSELL, IOWA
Edition of 1938
2615:5380:199

FILE COPY

2415