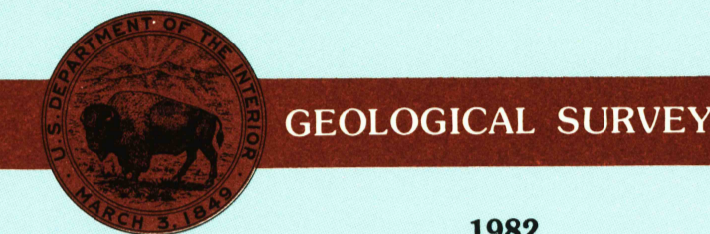




30 X 60 MINUTE QUADRANGLE SHOWING

- Contours and elevations in meters
- Highways, roads and other manmade structures
- Water features
- Woodland areas
- Geographic names



1982

Produced by the United States Geological Survey in cooperation with the U.S. Forest Service

Compiled from USGS 1:24 000 and 1:62 500-scale topographic maps dated 1953-1972. Planimetry revised from aerial photographs taken 1974-75 and other source data. Revised information not field checked. Map edited 1982.

Projection and 10 000-meter grid, zone 11, Universal Transverse Mercator

25 000-foot grid ticks based on Idaho coordinate system, west and central zones

1927 North American Datum

To place on the predicted North American Datum 1983 move the projection lines 15 meters north and 75 meters east

There may be private inholdings within the boundaries of the National or State reservations shown on this map

CONTOUR INTERVAL 50 METERS NATIONAL GEODETIC VERTICAL DATUM OF 1929

THIS MAP COMPLIES WITH NATIONAL MAP ACCURACY STANDARDS

FOR SALE BY U.S. GEOLOGICAL SURVEY, P.O. BOX 25286, DENVER, COLORADO, 80225

CONVERSION TABLE		DECLINATION DIAGRAM		ADDING MAPS		
Meters	Feet	MAGNETIC		1	2	3
1	3.2808	19° 15'		4	5	
2	6.5617	17° 45'		6	7	8
3	9.8425	15° 15'		McCall		
4	13.1234	12° 45'		Pinedale Creek		
5	16.4042	10° 15'		Challis		
6	19.6850	7° 45'		White Cloud Peaks		
7	22.9659	5° 15'		Boise		
8	26.2467	2° 45'		Idaho City		
9	29.5275	0° 15'		Sun Valley		
10	32.8084	N				

To convert meters to feet multiply by 3.2808
To convert feet to meters multiply by 0.3048

UTM grid convergence (GN) and 1982 magnetic declination (MD) at center of map (Diagram is approximate)

RECEIVED
NOV 3 0 2001
HISTORICAL MAP ARCHIVES

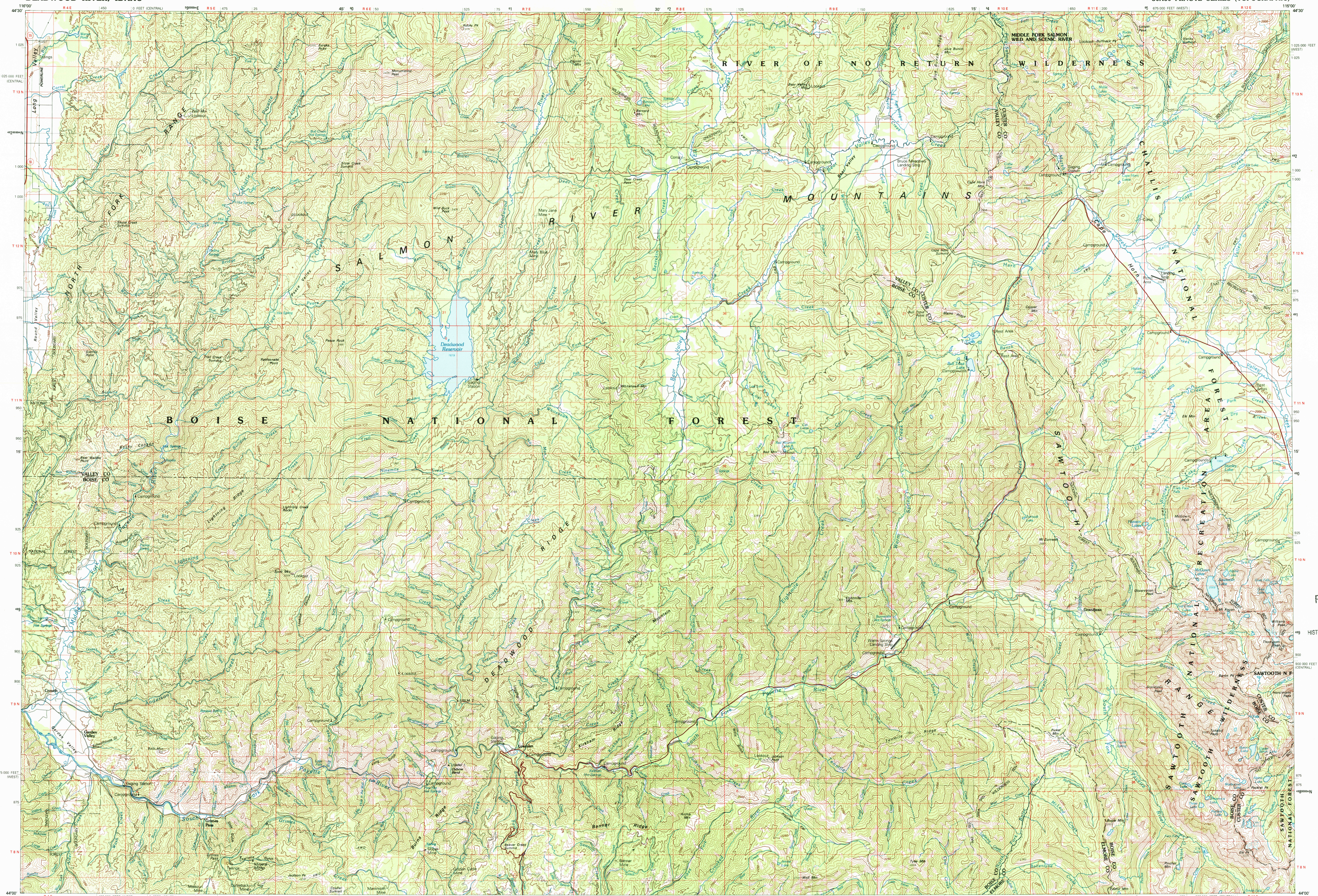
Topographic Map Symbols

- Primary highway, hard surface
- Secondary highway, hard surface
- Light duty road, principal street, hard or improved surface
- Other road or street; trail
- Route marker: Interstate, U. S., State
- Railroad: standard gauge, narrow gauge
- Bridge, viaduct, underpass
- Tunnel; road, railroad
- Built up area; locality; elevation
- Airport; landing field; landing strip
- National boundary
- State boundary
- County boundary
- National or State reservation boundary
- Land grant boundary
- U. S. public lands survey: range, township; section
- Range, township; section line; protracted
- Power transmission line; pipeline
- Dam; dam with lock
- Cemetery; building
- Windmill; water well; spring
- Mine shaft; adit or cave; mine, quarry; gravel pit
- Campground; picnic area; U. S. location monument
- Ruins; cliff dwelling
- Distorted surface: strip mine, lava; sand
- Contours: index, intermediate, supplementary
- Bathymetric contours: index, intermediate
- Stream, lake: perennial, intermittent
- Rapids, large and small; falls, large and small
- Area to be submerged; marsh, swamp
- Land subject to controlled inundation; woodland
- Scrub; mangrove
- Orchard; vineyard

A pamphlet describing topographic maps is available on request



20% TOTAL RECYCLED FIBER



DEADWOOD RIVER, IDAHO
N4400—W11500/30X60
1982

SCALE 1:100 000
1 CENTIMETER ON THE MAP REPRESENTS 1 KILOMETER ON THE GROUND
CONTOUR INTERVAL 50 METERS

KILOMETERS 1 0 1 2 3 4 5 6 7 8 9 10 11 12 13 14 15 16 17 18 19 20
MILES 0 1 2 3 4 5 6 7 8 9 10 11 12 13 14 15 16 17 18 19 20