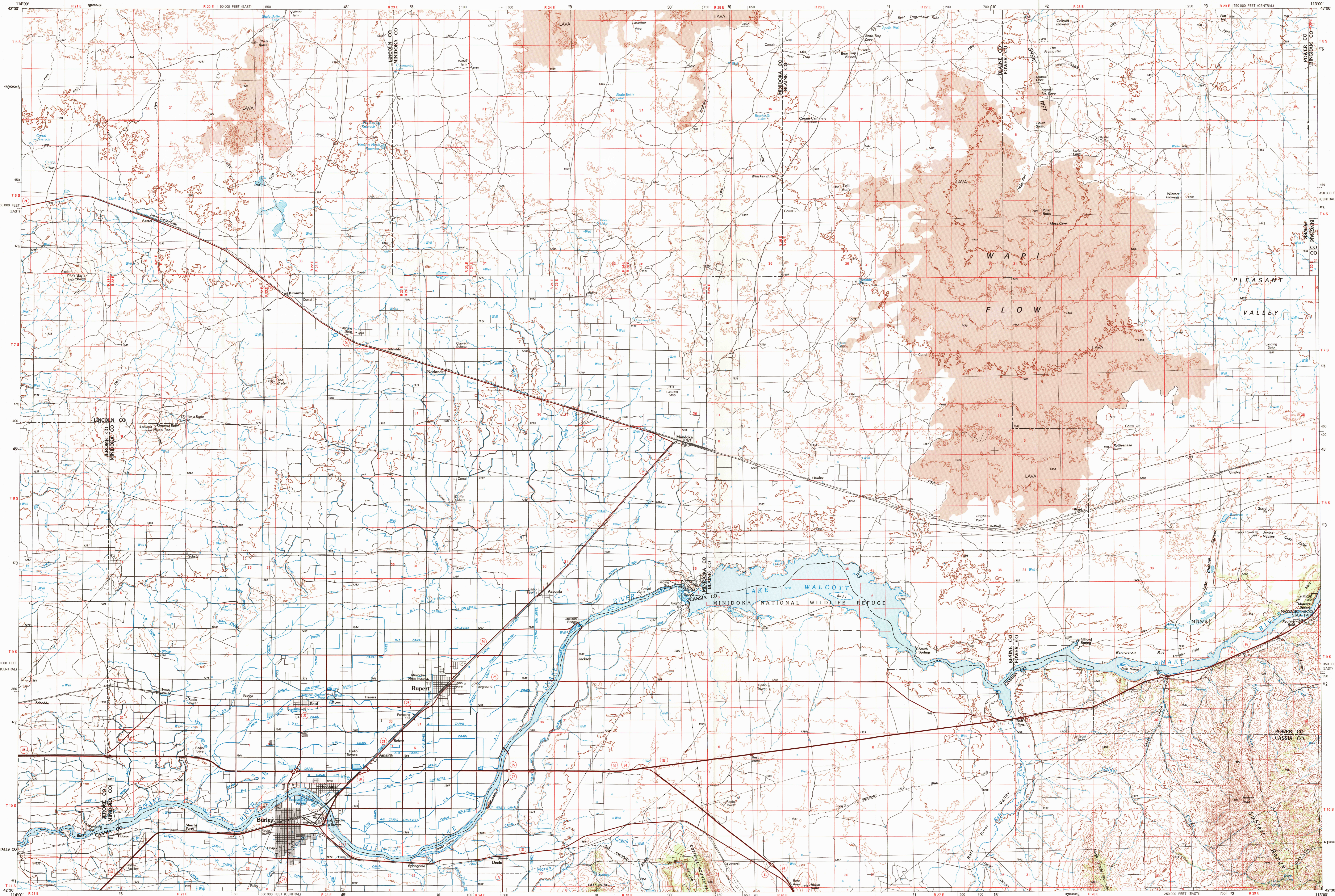


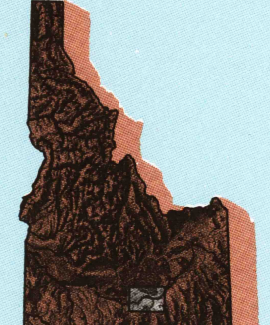
LAKE WALCOTT, IDAHO

30X60 MINUTE SERIES (TOPOGRAPHIC)



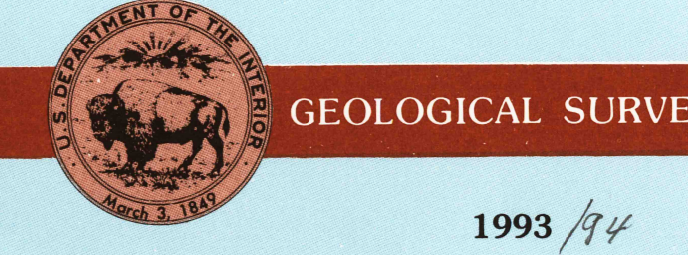
Lake Walcott IDAHO

1:100 000-scale metric topographic map



30 X 60 MINUTE QUADRANGLE SHOWING

- Contours and elevations in meters
- Highways, roads and other manmade structures
- Water features
- Woodland areas
- Geographic names



Produced by the United States Geological Survey  
 Compiled from USGS 1:24 000-scale topographic maps dated 1964-1984. Planimetry revised from aerial photographs taken 1987 and other source data. Revised information not field checked. Map edited 1993  
 1927 North American Datum (NAD 27). Projection and 10 000-meter grid: Universal Transverse Mercator, zone 12 50 000-foot ticks: Idaho coordinate system, central and east zone  
 The difference between NAD 27 and North American Datum of 1983 (NAD 83) is too small to show at this scale. The values of the shift between the datums for 7.5-minute intersections are given in USGS Bulletin 1875  
 There may be private inholdings within the boundaries of the National or State reservations shown on this map

CONTOUR INTERVAL: 20 METERS  
 NATIONAL GEODETIC VERTICAL DATUM OF 1929  
 ELEVATIONS SHOWN TO THE NEAREST METER

THIS MAP COMPLIES WITH NATIONAL MAP ACCURACY STANDARDS

CONVERSION TABLE		DECLINATION DIAGRAM		ADJOINING MAPS		
Meters	Feet	GR	MY	1	2	3
1	3.2808			4	5	6
2	6.5617			7	8	
3	9.8425					
4	13.1234					
5	16.4042					
6	19.6850					
7	22.9659					
8	26.2467					
9	29.5275					
10	32.8084					

To convert meters to feet multiply by 3.2808  
 To convert feet to meters multiply by 0.3048

UTM grid convergence multiply by 0.000126  
 UTM grid magnetic declination (M) multiply by 0.000126  
 Diagram is approximate

1 Fairfield  
 2 Centers of the Moon  
 3 Blackfoot  
 4 Twin Falls  
 5 Challis  
 6 Rogerson  
 7 Oshesee  
 8 Malad City

FOR SALE BY U.S. GEOLOGICAL SURVEY  
 DENVER, COLORADO, 80225, OR RESTON, VIRGINIA 22092

Topographic Map Symbols

- Primary highway, hard surface
- Secondary highway, hard surface
- Light duty road, principal street, hard or improved surface
- Other road or street, mail
- Route marker: Interstate; U. S. State
- Railroad: standard gage; narrow gage
- Bridge; overpass; underpass
- Tunnel; rock; masonry
- Bulk up area, locality, elevation
- Airport; landing field; landing strip
- National boundary
- State boundary
- County boundary
- National or State reservation boundary
- Land grant boundary
- U. S. public lands survey: range, township, section
- Range, township, section line: protracted
- Power transmission line: pipeline
- Dam: dam with lock
- Cemetery; building
- Windmill; water well; spring
- Mine shaft; adit or cave; mine, quarry; gravel pit
- Campground; picnic area; U. S. location monument
- Ruins; old dwelling
- Disturbed surface: strip mine, lava, sand
- Contours: index; intermediate; supplementary
- Bathymetric contours: index; intermediate
- Stream, lake: perennial; intermittent
- Rapids, large and small; falls, large and small
- Area to be submerged; marsh, swamp
- Land subject to controlled inundation; woodland
- Soak; mangrove
- Orchard; vineyard

SCALE 1:100 000  
 1 CENTIMETER ON THE MAP REPRESENTS 1 KILOMETER ON THE GROUND  
 CONTOUR INTERVAL 20 METERS

LAKE WALCOTT, IDAHO  
 42113-E1-TM-100  
 1993