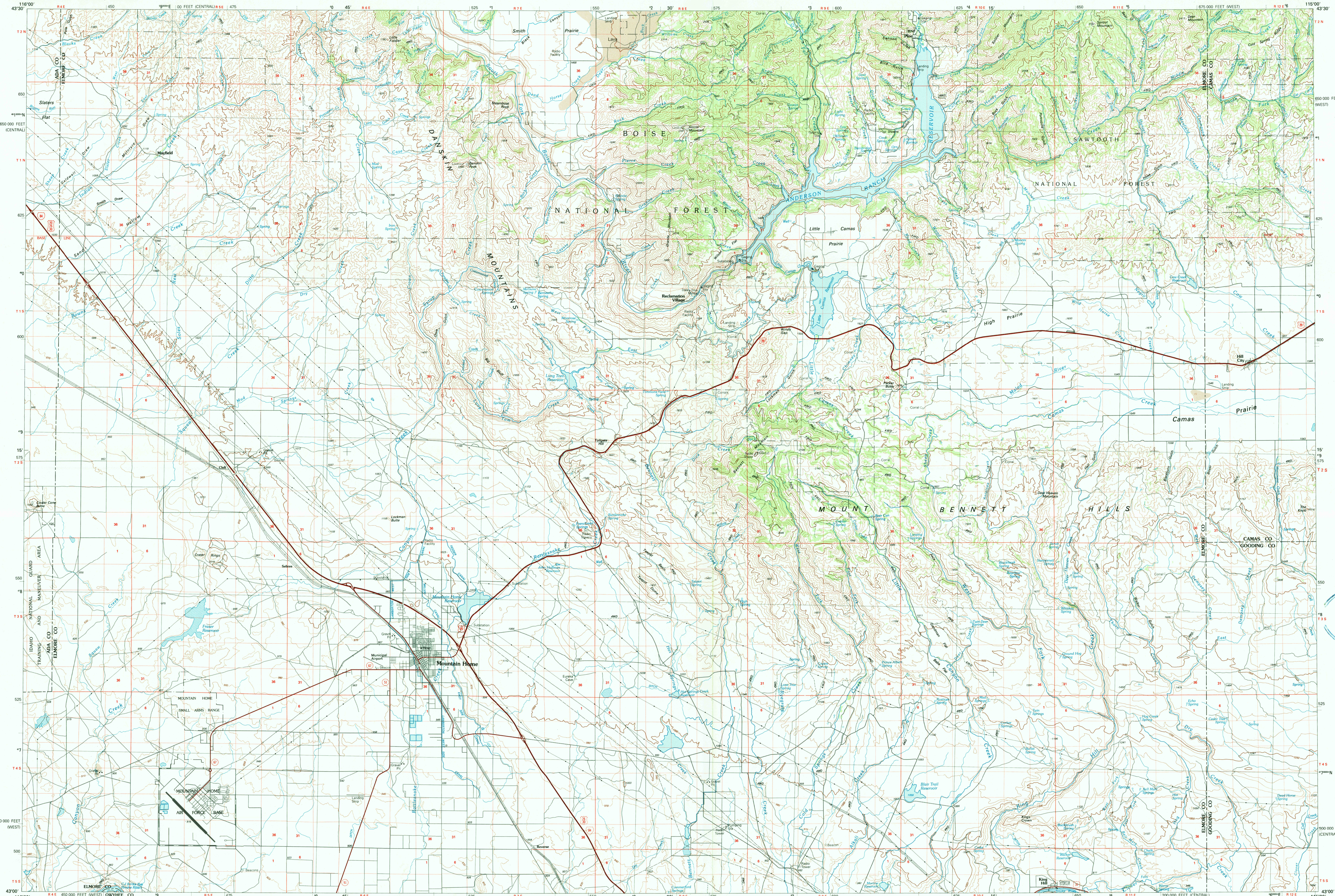


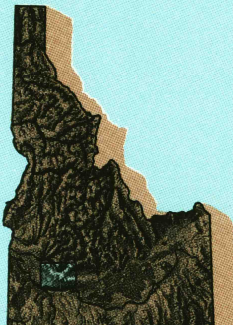
MOUNTAIN HOME, IDAHO

30X60 MINUTE SERIES (TOPOGRAPHIC)



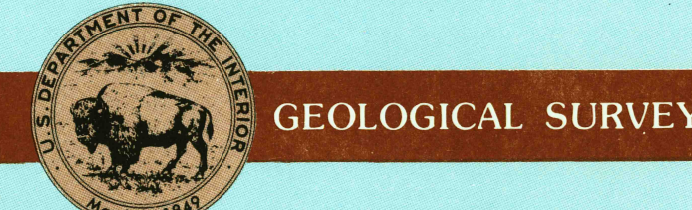
Mountain Home
IDAHO

1:100 000-scale metric
topographic map



30 X 60 MINUTE QUADRANGLE
SHOWING

- Contours and elevations in meters
- Highways, roads and other manmade structures
- Water features
- Woodland areas
- Geographic names



Produced by the United States Geological Survey
Compiled from USGS 1:24 000 and 1:62 500-scale topographic maps dated 1956-1986. Planimetry revised from aerial photographs taken 1984 and other source data. Revised information not field checked. Map edited 1990.
Projection and 10 000-meter grid, zone 11 Universal Transverse Mercator. 25 000-foot grid ticks based on Idaho coordinate system, west and central zones. 1927 North American Datum. To place on the predicted North American Datum 1983 move the projection lines 15 meters north and 75 meters east. There may be private inholdings within the boundaries of the National or State reservations shown on this map.

CONTOUR INTERVAL 50 METERS
SUPPLEMENTARY CONTOUR INTERVAL 10 METERS
NATIONAL GEODETIC VERTICAL DATUM OF 1929
ELEVATIONS SHOWN THE NEAREST METER

THIS MAP COMPLIES WITH NATIONAL MAP ACCURACY STANDARDS

CONVERSION TABLE		DECLINATION DIAGRAM	ADJOINING MAPS				
Meters	Feet		1	2	3	4	5
1	3.2808		1	2	3	4	5
2	6.5617		1	2	3	4	5
3	9.8425		1	2	3	4	5
4	13.1234		1	2	3	4	5
5	16.4042		1	2	3	4	5
6	19.6850		1	2	3	4	5
7	22.9659		1	2	3	4	5
8	26.2467		1	2	3	4	5
9	29.5276		1	2	3	4	5
10	32.8084		1	2	3	4	5
To convert meters to feet multiply by 3.2808		UTM grid convergence (GN and 1983 magnetic declination (MD)) at center of map. Diagram is approximate.	1	2	3	4	5
To convert feet to meters multiply by 0.3048			1	2	3	4	5

FOR SALE BY U.S. GEOLOGICAL SURVEY, DENVER, COLORADO 80225
OR RESTON, VIRGINIA 22092



Topographic Map Symbols

- Primary highway, hard surface
- Secondary highway, hard surface
- Light duty road, principal street, hard or improved surface
- Other road or street, trail
- Route marker: Interstate, U.S., State
- Railroad: standard gage; narrow gage
- Bridges: overpass; underpass
- Tunnel: road; railroad
- Built-up area; quarry; shoreline
- Airport; landing field; landing strip
- National boundary
- County boundary
- National or State reservation boundary
- Land grant boundary
- U.S. public lands survey: range, township; section
- Range, township; section line: protracted
- Power transmission line; pipeline
- Dam; dam with lock
- Cemetery; building
- Windmill; water well; spring
- Mine shaft; adit or cave; mine, quarry; gravel pit
- Campground; picnic area; U.S. location monument
- Ruins; cliff dwelling
- Distorted surface: strip mine, lava, sand
- Contours: index; intermediate; supplementary
- Bathymetric contours: index; intermediate
- Stream, lake: perennial; intermittent
- Rapids, large and small; falls, large and small
- Area to be submerged; marsh, swamp
- Land subject to controlled inundation; woodland
- Scrub, mangrove
- Orchard; vineyard

A pamphlet describing topographic maps is available on request

MOUNTAIN HOME, IDAHO
43115-A1-TM-100

1990