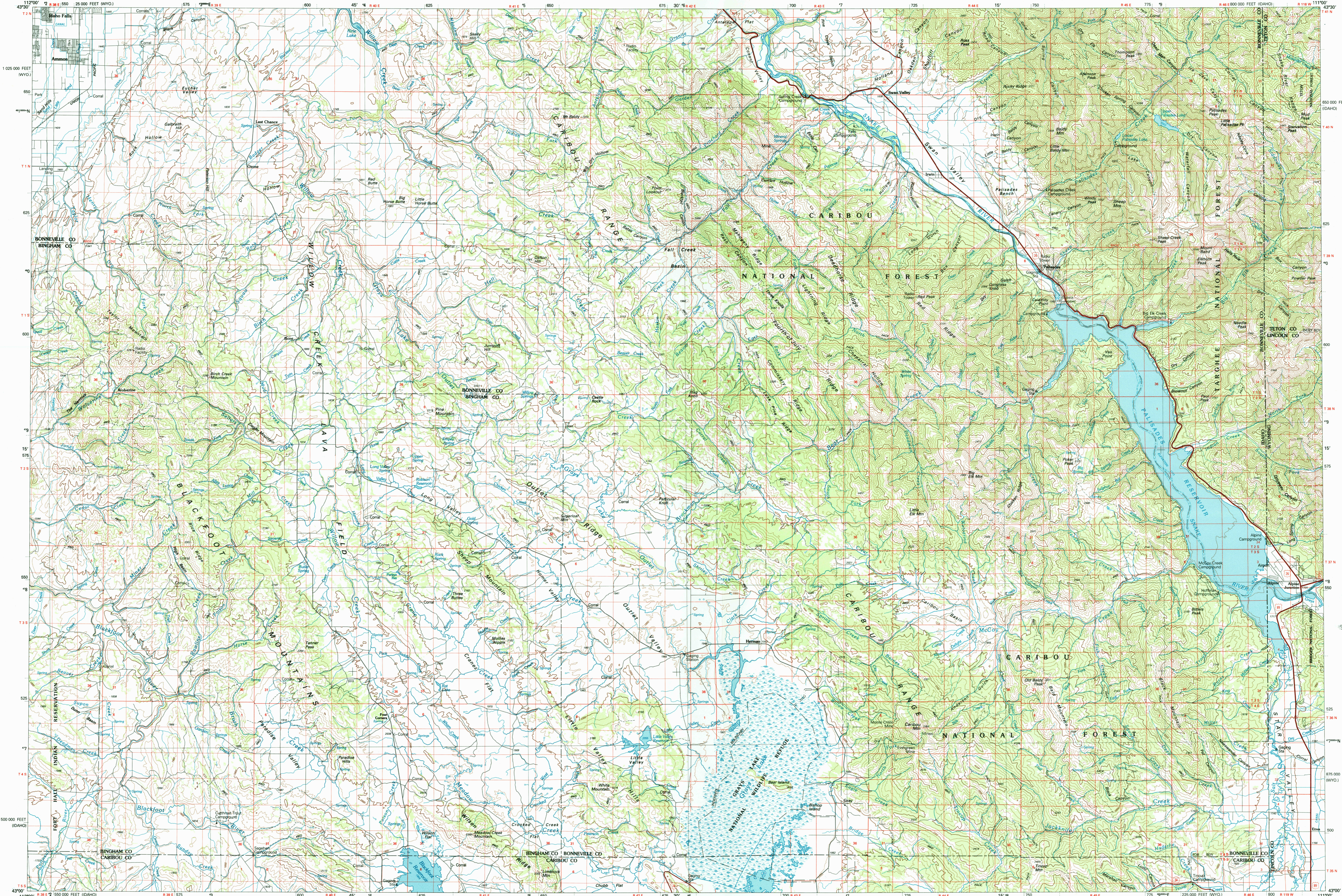


**Palisades**  
IDAHO-WYOMING  
1:100 000-scale metric  
topographic map

30 X 60 MINUTE QUADRANGLE  
SHOWING

- Contours and elevations in meters
- Highways, roads and other manmade structures
- Water features
- Woodland areas
- Geographic names

GEOLOGICAL SURVEY  
1986



Produced by the United States Geological Survey  
Compiled from USGS 1:24 000-scale topographic maps dated 1966-1981. Planimetry revised from aerial photographs taken 1980, and other source data. Revised information not field checked. Map edited 1986.

Projection and 10 000-meter grid, zone 12. Universal Transverse Mercator 25 000-foot grid ticks based on Idaho coordinate system, east zone and Wyoming coordinate system, west zone 1927 North American Datum. To place on the predicted North American Datum 1983 move the projection lines 12 meters north and 64 meters east. There may be private inholdings within the boundaries of the National or State reservations shown on this map.

CONTOUR INTERVAL 50 METERS  
NATIONAL GEODETIC VERTICAL DATUM OF 1929  
ELEVATIONS SHOWN TO THE NEAREST METER

THIS MAP COMPLIES WITH NATIONAL MAP ACCURACY STANDARDS

FOR SALE BY U.S. GEOLOGICAL SURVEY,  
P.O. BOX 25286, DENVER, COLORADO, 80225

Meters	Feet
1	3.2808
2	6.5617
3	9.8425
4	13.1234
5	16.4043
6	19.6852
7	22.9661
8	26.2470
9	29.5278
10	32.8084

To convert meters to feet multiply by 3.2808  
To convert feet to meters multiply by 0.3048

Declination	Meters
1	3.2808
2	6.5617
3	9.8425
4	13.1234
5	16.4043
6	19.6852
7	22.9661
8	26.2470
9	29.5278
10	32.8084

UTM grid convergence (GM) and 1983 magnetic declination (MD) at center of map. Diagram is approximate.

Adjoining Maps	Number
1	1
2	2
3	3
4	4
5	5
6	6
7	7
8	8

1 Circular Butte  
2 Hoshone  
3 Jackson Lake  
4 Jackson  
5 Jackson  
6 Soda Springs  
7 Soda Springs  
8 Alton

RECEIVED  
OCT 08 2003  
STORICAL MAP ARCHIVES

**Topographic Map Symbols**

Primary highway, hard surface	—
Secondary highway, hard surface	—
Light duty road, principal street, hard or improved surface	—
Other road or street, trail	—
Route marker: Interstate, U.S., State	—
Railroad: standard gauge, narrow gauge	—
Bridge: overpass, underpass	—
Tunnel: road, railroad	—
Build up area: locality, elevation	—
Airport: landing field, landing strip	—
National boundary	—
State boundary	—
County boundary	—
National or State reservation boundary	—
Land grant boundary	—
U.S. public lands survey: range, township, section	—
Range, township, section line: protracted	—
Power transmission line: pipeline	—
Dam: dam with lock	—
Cemetery: building	—
Windmill; water well; spring	—
Mine shaft: adit or cave; mine, quarry; gravel pit	—
Campground; picnic area; U.S. location monument	—
Ruins, cliff dwelling	—
Dissected surface: strip mine, lava, sand	—
Contours: index; intermediate; supplementary	—
Bathymetric contours: index; intermediate	—
Stream, lake: perennial; intermittent	—
Rapids, large and small; falls, large and small	—
Area to be submerged; marsh, swamp	—
Land subject to controlled inundation; woodland	—
Scrub; mangrove	—
Orchard; vineyard	—