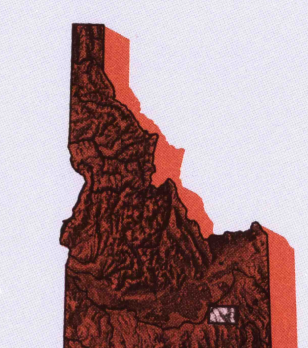


POCATELLO, IDAHO

30X60 MINUTE SERIES (TOPOGRAPHIC)

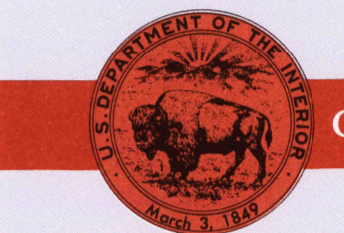
Pocatello IDAHO

1:100 000-scale metric topographic map



30 X 60 MINUTE QUADRANGLE SHOWING

- Contours and elevations in meters
- Highways, roads and other manmade structures
- Water features
- Woodland areas
- Geographic names



GEOLOGICAL SURVEY

1984

Produced by the United States Geological Survey
 Compiled from USGS 1:24 000-scale topographic maps dated 1968-1971. Planimetry revised from aerial photographs taken 1980 and other source data. Revised information not field checked. Map edited 1984.
 Projection and 10 000-meter grid, zone 12, Universal Transverse Mercator
 25 000-foot grid ticks based on Idaho coordinate system, east zone, 1927 North American Datum
 To place on the predicted North American Datum 1983 move the projection lines 12 meters north and 67 meters east
 There may be private inholdings within the boundaries of the National or State reservations shown on this map

CONTOUR INTERVAL 50 METERS NATIONAL GEODETIC VERTICAL DATUM OF 1929

THIS MAP COMPLIES WITH NATIONAL MAP ACCURACY STANDARDS

FOR SALE BY U.S. GEOLOGICAL SURVEY, P.O. BOX 25286, DENVER, COLORADO, 80225

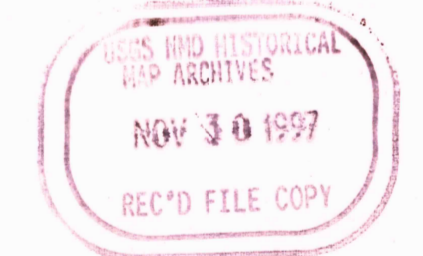
CONVERSION TABLE		DECLINATION DIAGRAM		ADJOINING MAPS		
Meters	Feet	Diagram		1	2	3
1	3.2808			4	5	6
2	6.5617			7	8	9
3	9.8425			10	11	12
4	13.1234			13	14	15
5	16.4042			16	17	18
6	19.6850			19	20	21
7	22.9659			22	23	24
8	26.2467			25	26	27
9	29.5276			28	29	30
10	32.8084			31	32	33

To convert meters to feet multiply by 3.2808
 To convert feet to meters multiply by 0.3048

UTM grid convergence (GNU and 1984 metric datum) at center of map Diagram is approximate

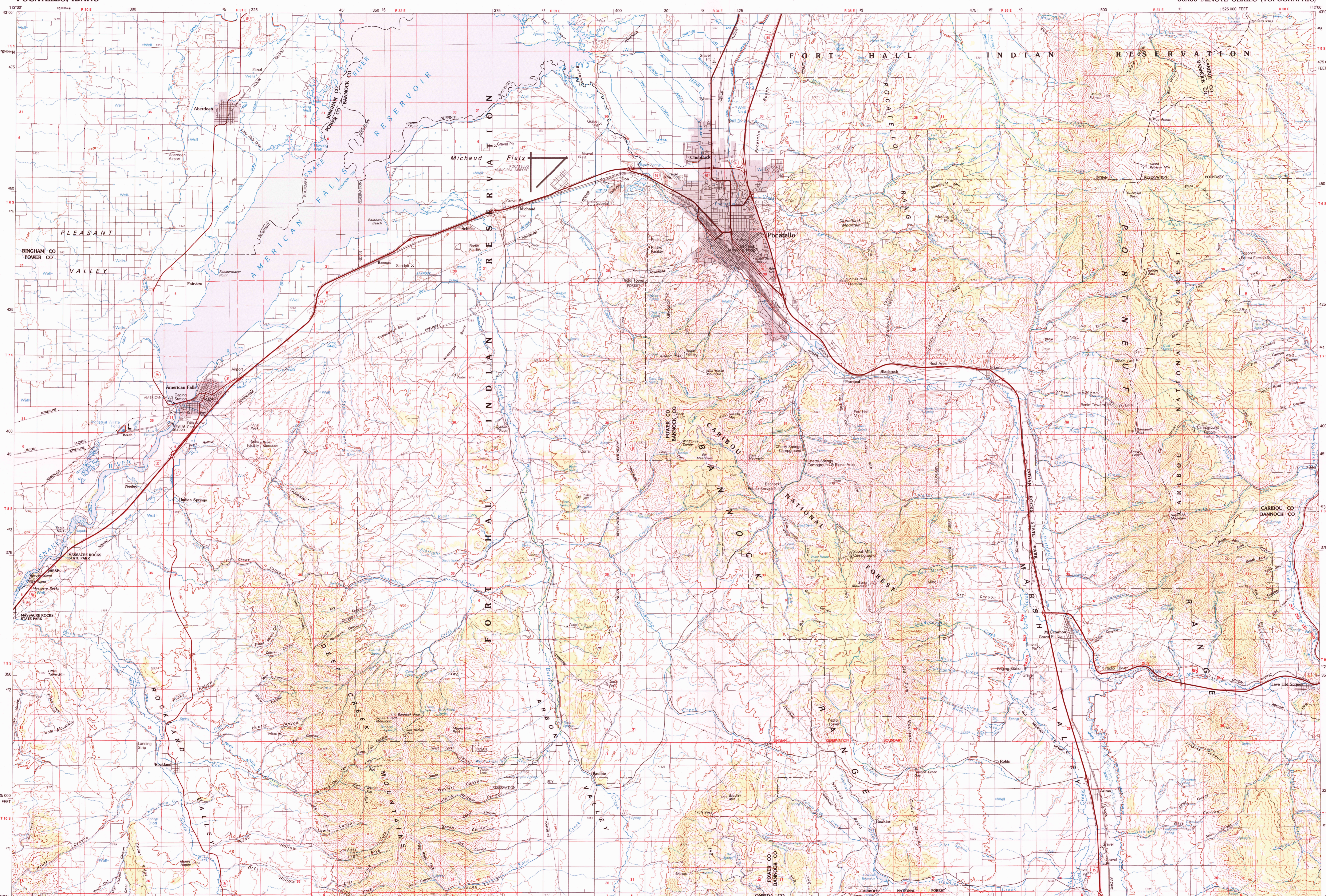
1 Craters of the Moon
 2 Blackfoot Falls
 3 Lake Walcott
 4 Soda Springs
 5 Oakley
 6 Metal City
 7 Preston

ISBN 0-607-18127-3



Topographic Map Symbols

- Primary highway, hard surface
- Secondary highway, hard surface
- Light duty road, principal street, hard or improved surface
- Other road or street, trail
- Route marker: Interstate, U. S. State
- Railroad: standard gauge; narrow gauge
- Bridge: overpass; underpass
- Tunnel: road; railroad
- Bath up area, locality, elevation
- Airport, landing field, landing strip
- National boundary
- State boundary
- County boundary
- National or State reservation boundary
- Land grant boundary
- U. S. public lands survey: range, township, section
- Range, township, section line: protracted
- Power transmission line, pipeline
- Dam; dam with lock
- Canary; building
- Windmill; water well; spring
- Mine shaft; adit or cave; mine, quarry; gravel pit
- Campground; picnic area; U. S. location monument
- Ruin; cliff dwelling
- Distorted surface: strata, mine, lava, sand
- Contour: index; intermediate; supplementary
- Bathymetric contour: index; intermediate
- Stream, lake: perennial; intermittent
- Rapids, large and small; falls, large and small
- Area to be submerged; marsh, swamp
- Land subject to controlled inundation; woodland
- Scrub; mangrove
- Orchard; vineyard



SCALE 1:100 000
 1 CENTIMETER ON THE MAP REPRESENTS 1 KILOMETER ON THE GROUND
 CONTOUR INTERVAL 50 METERS

POCATELLO, IDAHO 42112-E1-TM-100

1984