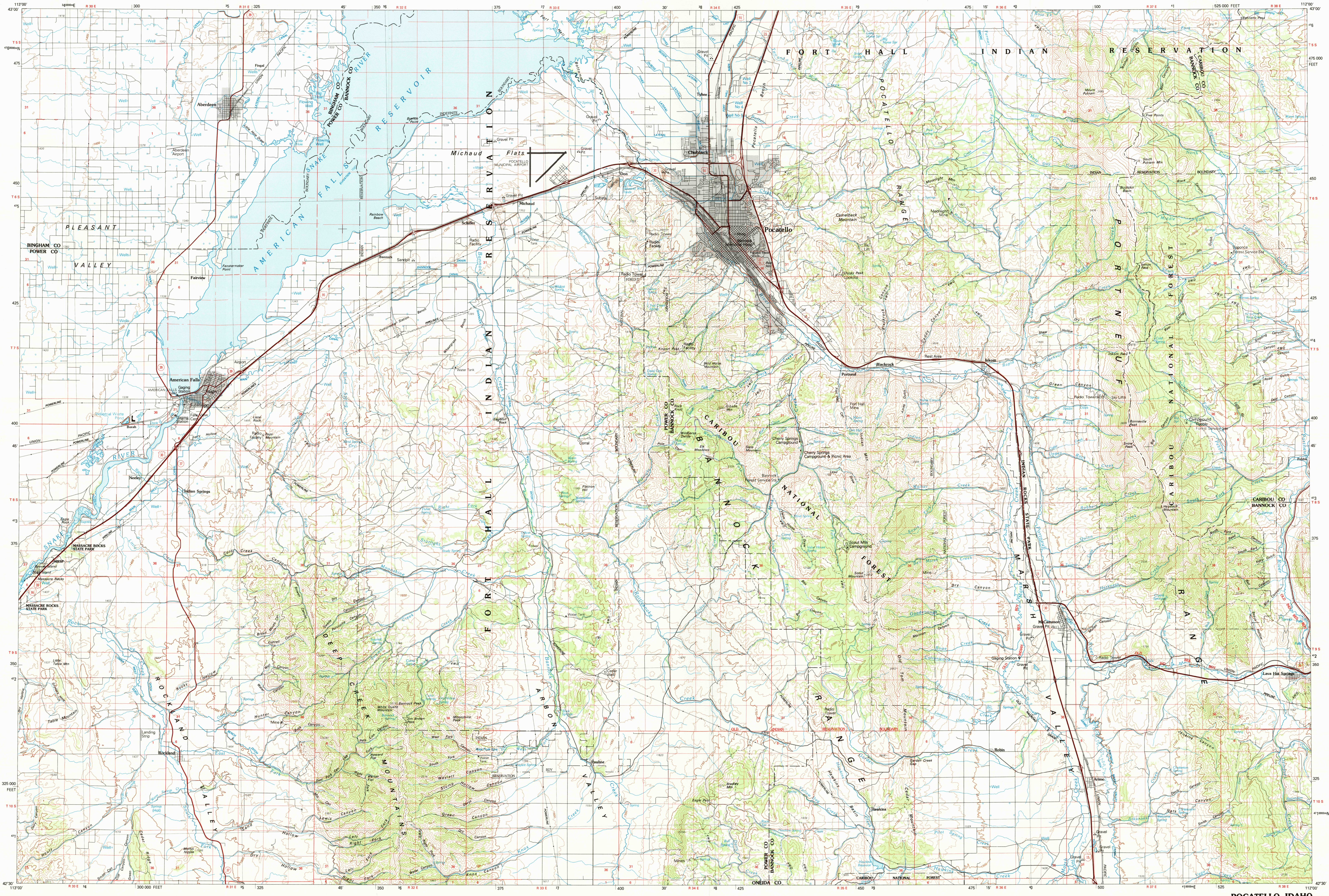


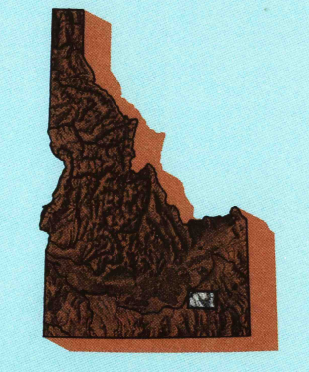
POCATELLO, IDAHO

30X60 MINUTE SERIES (TOPOGRAPHIC)



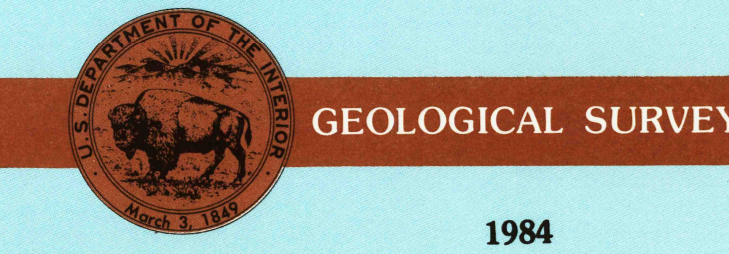
# Pocatello IDAHO

1:100 000-scale metric topographic map



30 X 60 MINUTE QUADRANGLE SHOWING

- Contours and elevations in meters
- Highways, roads and other manmade structures
- Water features
- Woodland areas
- Geographic names



Produced by the United States Geological Survey  
 Compiled from USGS 1:24 000-scale topographic maps dated 1968-1971. Planimetry revised from aerial photographs taken 1980 and other source data. Revised information not field checked. Map edited 1984.  
 Projection and 10 000-meter grid, zone 12, Universal Transverse Mercator  
 25 000-foot grid ticks based on Idaho coordinate system, east zone, 1927 North American Datum  
 To place on the predicted North American Datum 1983 move the projection lines 12 meters north and 67 meters east  
 There may be private inholdings within the boundaries of the National or State reservations shown on this map

CONTOUR INTERVAL 50 METERS  
 NATIONAL GEODETIC VERTICAL DATUM OF 1929

THIS MAP COMPLIES WITH NATIONAL MAP ACCURACY STANDARDS

CONVERSION TABLE		DECLINATION DIAGRAM		ADJOINING MAPS		
Meters	Feet	GN	MAG	1	2	3
1	3.2808		11°01'	4	5	6
2	6.5617					
3	9.8425					
4	13.1234					
5	16.4042					
6	19.6850					
7	22.9659					
8	26.2467					
9	29.5275					
10	32.8084					

To convert meters to feet multiply by 3.2808  
 To convert feet to meters multiply by 0.3048

UTM grid convergence (GN) and 1984 magnetic declination (MAG) at center of map Diagram is approximate

1	Castles of the Moon
2	Blackfoot
3	Palouse
4	Lake Walcott
5	Snake Springs
6	Oakley
7	Mead City
8	Preston

FOR SALE BY U. S. GEOLOGICAL SURVEY, DENVER, COLORADO 80225  
 OR RESTON, VIRGINIA 22092

## Topographic Map Symbols

- Primary highway, hard surface
- Secondary highway, hard surface
- Light duty road, principal street, hard or improved surface
- Other road or street, trail
- Route marker: Interstate, U. S., State
- Railroad: standard gage, narrow gage
- Bridge: overpass, underpass
- Tunnel: road, railroad
- Built up area, locality, elevation
- Airport: landing field, landing strip
- National boundary
- State boundary
- County boundary
- National or State reservation boundary
- Land grant boundary
- U. S. public lands survey: range, township, section
- Range, township, section line, constructed
- Power transmission line: pipeline
- Dam, dam with lock
- Cemetery: building
- Wetland: water wall, spring
- Mine shaft: adit or cave, mine, quarry, gravel pit
- Campground: picnic area, U. S. location monument
- Ruin: cliff dwelling
- Distorted surface: strip mine, lava, sand
- Contours: index, intermediate, supplementary
- Bathymetric contours: index, intermediate
- Stream, lake, perennial, intermittent
- Rapids, large and small; falls, large and small
- Area to be submerged, marsh, swamp
- Land subject to controlled inundation, woodland
- Scrub, mangrove
- Orchard, vineyard