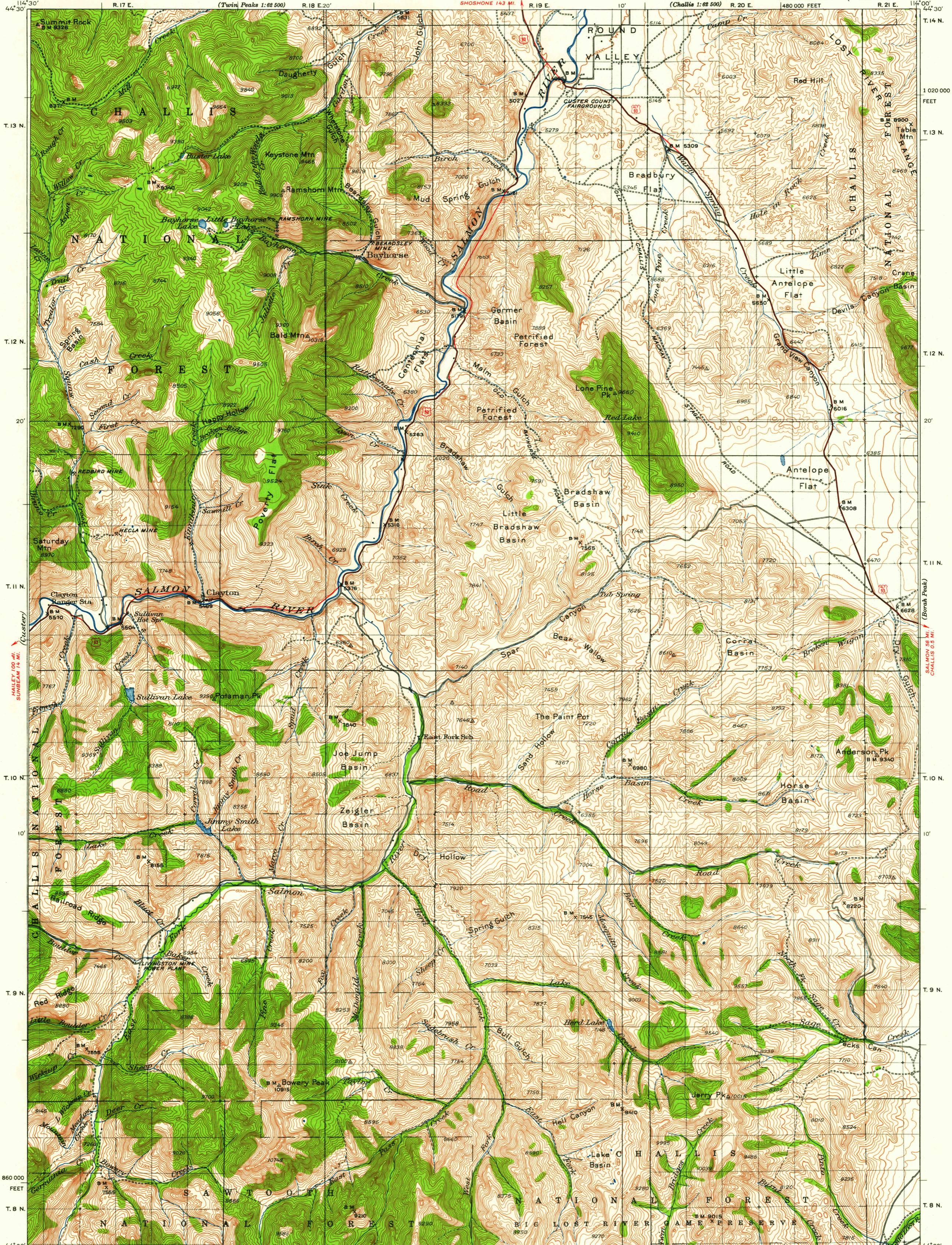


UNITED STATES  
DEPARTMENT OF THE INTERIOR  
GEOLOGICAL SURVEY

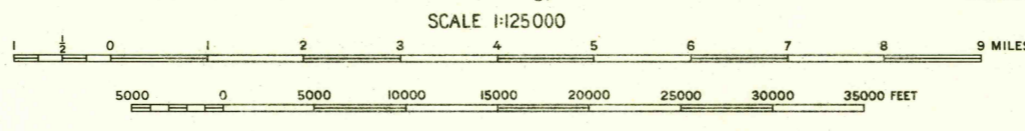
IDAHO  
(CUSTER COUNTY)  
BAYHORSE QUADRANGLE



Topography by Lee Morrison  
Control by U.S. Geological Survey  
Surveyed in 1927-1929

**ROAD CLASSIFICATION**  
 Heavy-duty ————  
 Light-duty ————  
 Unimproved dirt - - - - -  
 U.S. Route

TRUE NORTH  
MAGNETIC NORTH  
APPROXIMATE MEAN  
DECLINATION, 1929



CONTOUR INTERVAL 100 FEET  
DATUM IS MEAN SEA LEVEL

FOR SALE BY U.S. GEOLOGICAL SURVEY, DENVER 25, COLORADO OR WASHINGTON 25, D. C.  
A FOLDER DESCRIBING TOPOGRAPHIC MAPS AND SYMBOLS IS AVAILABLE ON REQUEST

DIAGRAM OF TOWNSHIP

6	5	4	3	2	1
7	8	9	10	11	12
13	14	15	16	17	18
19	20	21	22	23	24
25	26	27	28	29	30
31	32	33	34	35	36

Polyconic projection. To place on 1927 North American datum  
move projection lines 110 feet north  
20,000-foot grid based on Idaho (Central)  
rectangular coordinate system

USGS  
Historical File  
Topographic Division

BAYHORSE, IDAHO  
N 4400-W11400/30

1929

USGS  
FILE COPY  
TOPOGRAPHIC DIVISION

1050

FEB 21 1961