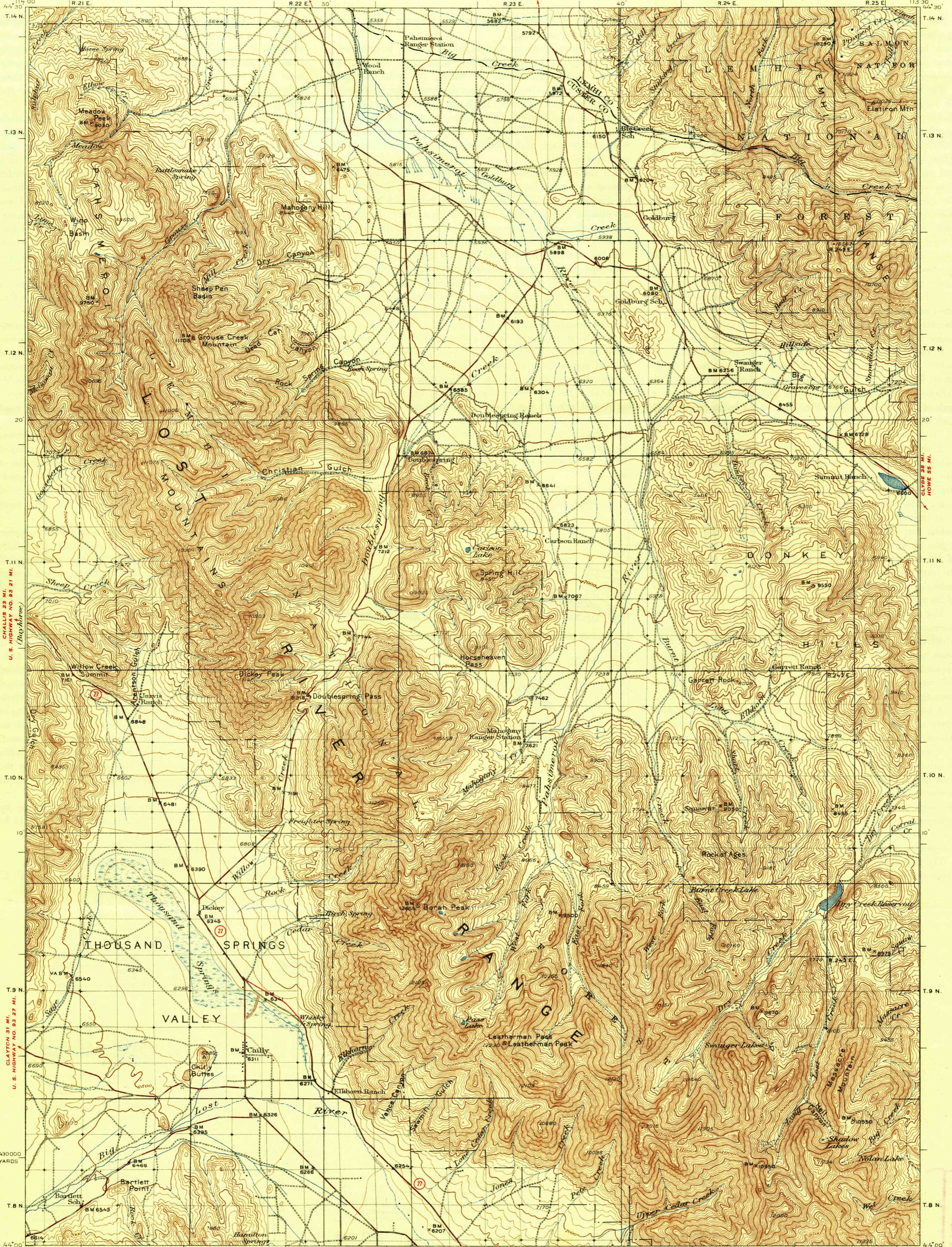


SALMON 63 MI.
U. S. HIGHWAY NO. 93 20 MI.
ELLIS (U. S. HIGHWAY NO. 93) 28 MI.
PATTERSON 31 MI.



CHALLIE 23 MI.
U. S. HIGHWAY NO. 93 21 MI.
(Bayhorse)

CLAYTON 31 MI.
U. S. HIGHWAY NO. 93 27 MI.

Topography by Lee Morrison and Lester C. Walker
Surveyed in 1934-1935
KETCHUM (U. S. HIGHWAY NO. 93) 36 MI.
TWIN FALLS 124 MI.

MACKAY 11 MI. Scale 1:25000 MACKAY 10 MI. BLACKFOOT 100 MI.

0 1 2 3 4 5 Miles
0 1 2 3 4 5 Kilometers
Contour interval 100 feet
Datum is mean sea level

Polyconic projection, 1927 North American datum
5000 yard grid based upon U.S. zone system, F
To join Bayhorse map use
dotted projection corners.

HARD IMPERVIOUSLY SURFACED ROADS
OTHER MAIN TRAVELED ROADS
1937
UNITED STATES HIGHWAY NUMBER
STATE HIGHWAY NUMBER

BORAH PEAK IDAHO
Edition of 1938

REPRODUCED FROM THE
GEOLOGICAL SURVEY
MAPS AND CHARTS
SECTION
WASHINGTON, D. C.