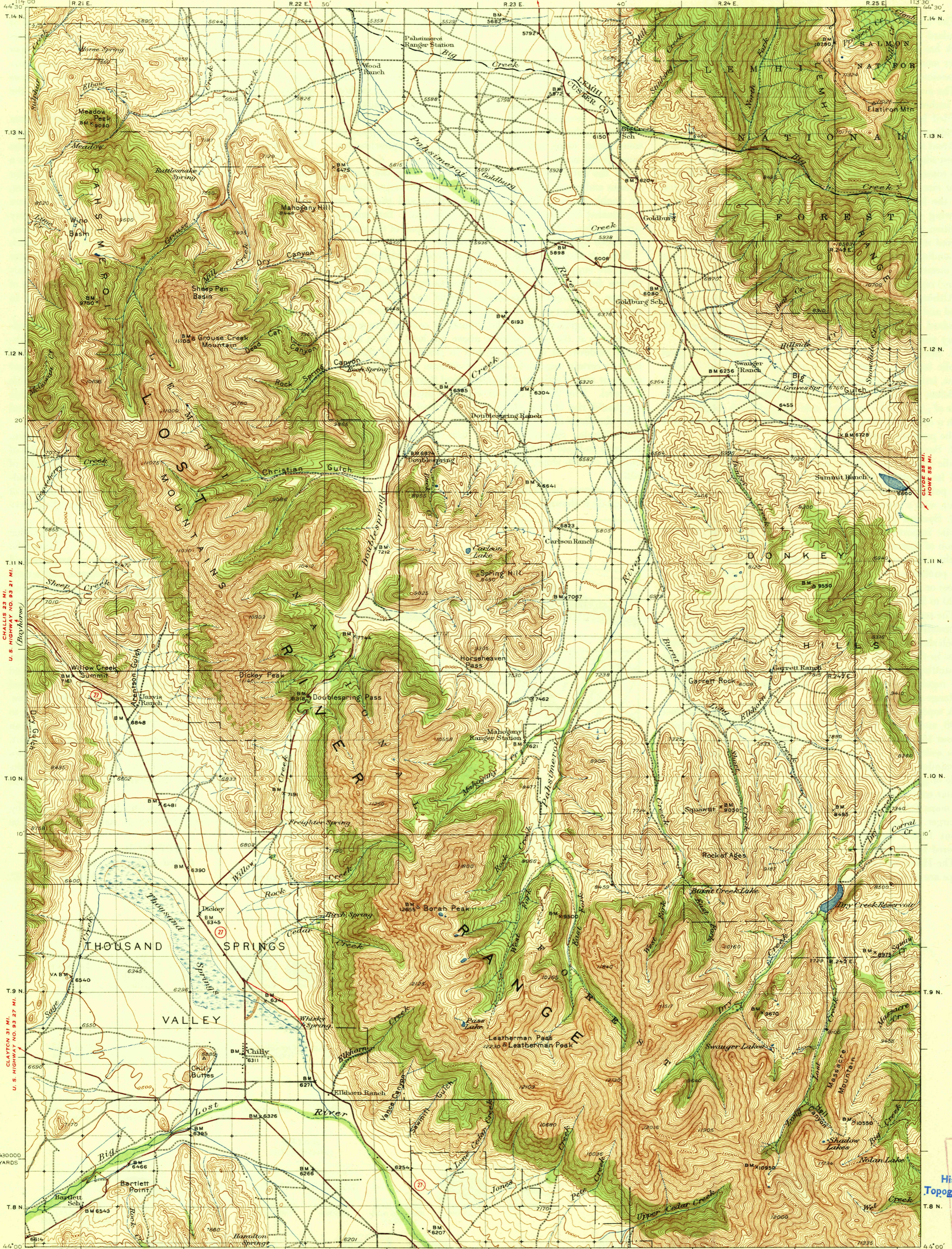


UNITED STATES
DEPARTMENT OF THE INTERIOR
GEOLOGICAL SURVEY

IDAHO
BORAH PEAK QUADRANGLE



CHALLIS 23 MI.
U.S. HIGHWAY NO. 93 21 MI.
(Bayhorse)

CLAYTON 31 MI.
U.S. HIGHWAY NO. 93 27 MI.

Topography by Lee Morrison and Lester C. Walker
Surveyed in 1934-1935
KETCHUM (U.S. HIGHWAY NO. 93) 36 MI.
TWIN FALLS 124 MI.

SALMON 63 MI.
U.S. HIGHWAY NO. 93 20 MI.
ELLIS (U.S. HIGHWAY NO. 93) 28 MI.
PATTERSON 31 MI.

MACKAY 11 MI.
Scale 1:25000 BLACKFOOT 100 MI.
5 Miles
1 1/2 0 1 2 3 4 5 Kilometers

Contour interval 100 feet
Datum is mean sea level

HARD IMPERVIOUSLY SURFACED ROADS
OTHER MAIN TRAVELED ROADS
1937
UNITED STATES HIGHWAY NUMBER
STATE HIGHWAY NUMBER

Polyconic projection, 1927 North American datum
5000 yard grid based upon U.S. zone system, F
To join Bayhorse map use
dotted projection corners.

BORAH PEAK, IDAHO
Edition of 1938
1667-140; /41;
MAY 9 - 1090

USGS
Historical File
Topographic Division
COPY