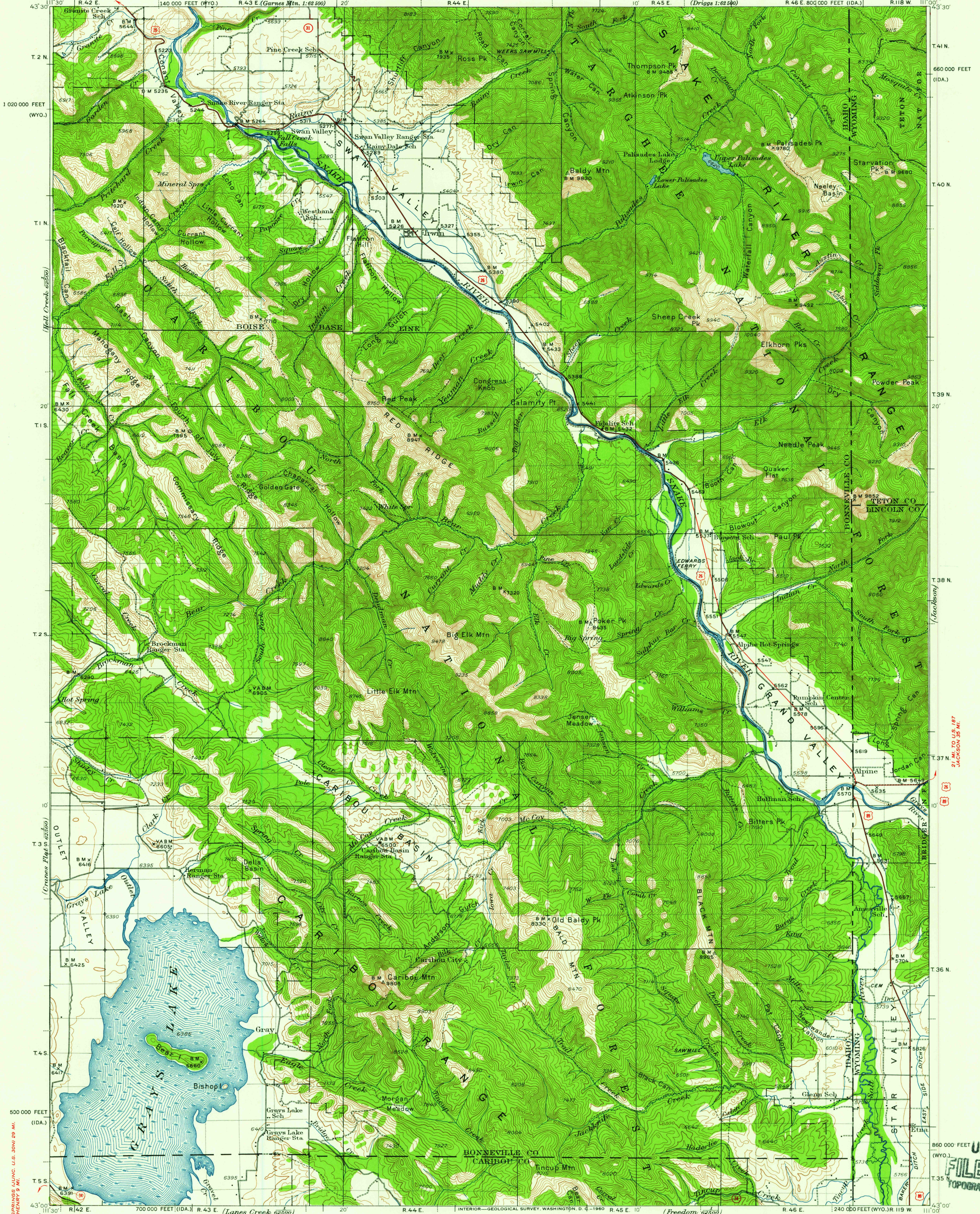


UNITED STATES
DEPARTMENT OF THE INTERIOR
GEOLOGICAL SURVEY

IDAHO-WYOMING
IRWIN QUADRANGLE



ROAD CLASSIFICATION
 Heavy-duty ——— Light-duty ———
 Medium-duty ——— Unimproved dirt ———
 U.S. Route State Route

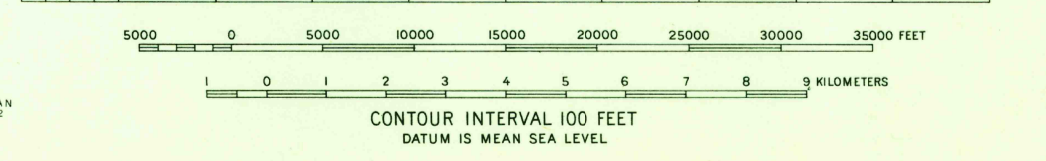


DIAGRAM OF TOWNSHIP

| | | | | | |
|----|----|----|----|----|----|
| 6 | 5 | 4 | 3 | 2 | 1 |
| 7 | 8 | 9 | 10 | 11 | 12 |
| 13 | 14 | 15 | 16 | 17 | 18 |
| 19 | 20 | 21 | 22 | 23 | 24 |
| 25 | 26 | 27 | 28 | 29 | 30 |
| 31 | 32 | 33 | 34 | 35 | 36 |

IRWIN, IDA.—WYO.
 N 4300—W 11100/30
 1932

FOR SALE BY U.S. GEOLOGICAL SURVEY, DENVER 25, COLORADO OR WASHINGTON 25, D. C.
 A FOLDER DESCRIBING TOPOGRAPHIC MAPS AND SYMBOLS IS AVAILABLE ON REQUEST

USGS
 Historical File
 Topographic Division

U.S.G.S.
 FILE COPY
 TOPOGRAPHIC DIVISION

FEB 11 1960
 1550