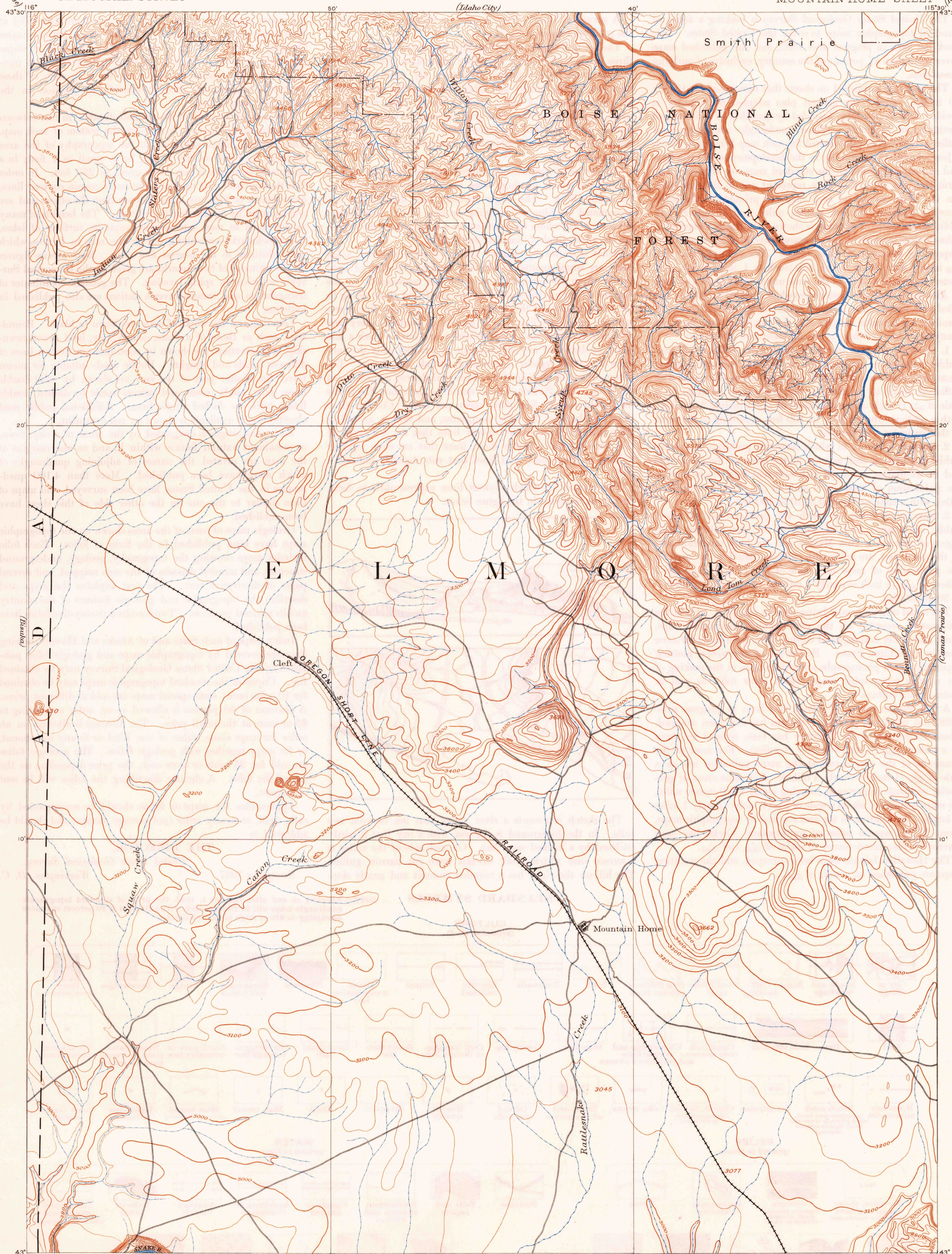


U. S. G. S.
FILE COPY
Inspection and Editing.

UNITED STATES
DEPARTMENT OF THE INTERIOR
GEOLOGICAL SURVEY

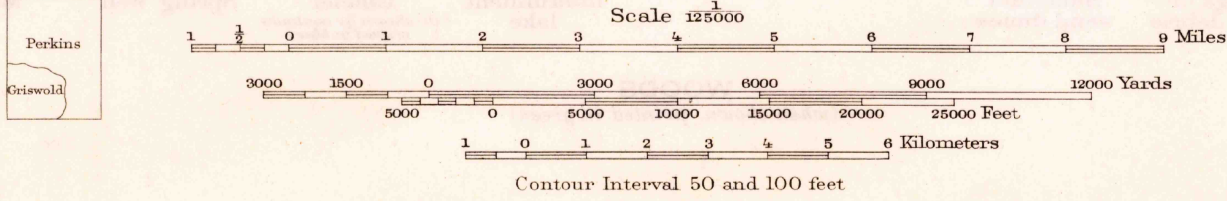
IDAHO
MOUNTAIN HOME SHEET



U. S. G. S.
FILE COPY
Inspection and Editing.

U. S. G. S.
FILE COPY
Inspection and Editing.

A. H. Thompson, Geographer.
W. T. Griswold, Topographer in charge.
Triangulation by W. T. Griswold and E. T. Perkins Jr.
Topography
Surveyed in 1889



Edition of Dec. 1893, reprinted 1948
Polyconic projection.
Surveyed by reconnaissance methods
IDAHO
MOUNTAIN HOME
N4300-W11530/30

USCS U. S.
Historical
Topographic Division
Inspection and Editing.

DEC 13 1948 3255