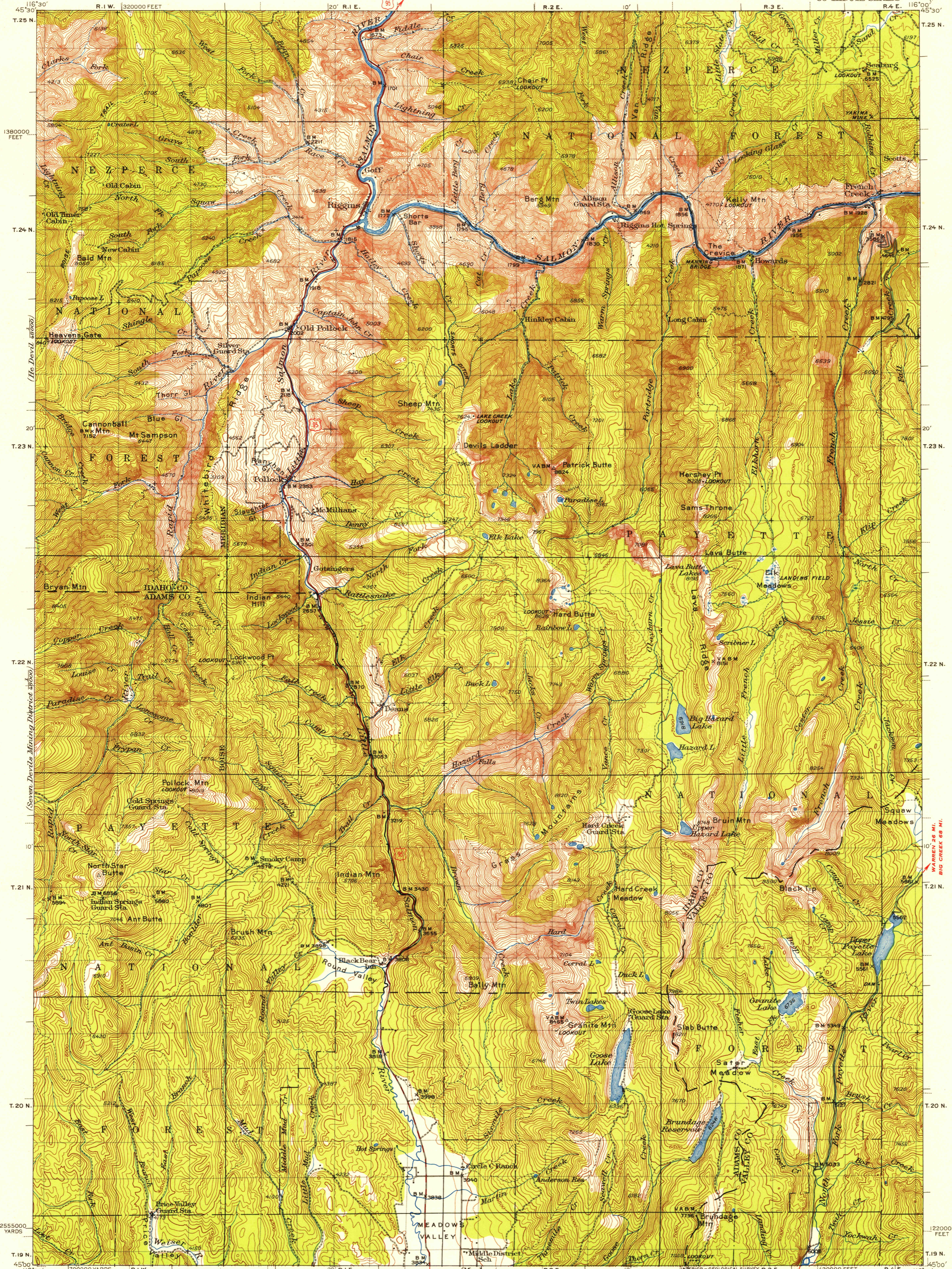
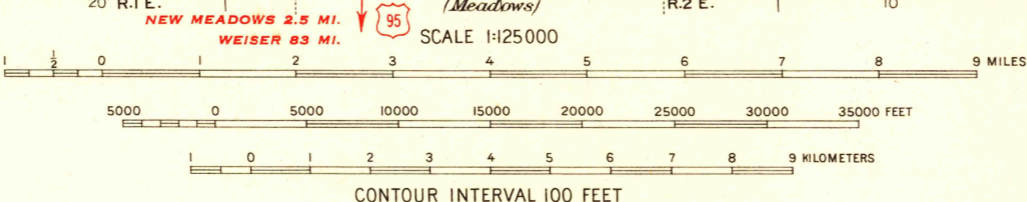


U.S.G.S.
FILE COPY
TOPOGRAPHIC DIVISION



Topography by C.A. Stoesifer, Adolph Fankhauser,
C.W. Birdseye, and D.S. Cruickshank
Surveyed in 1938

ROAD CLASSIFICATION
Heavy-duty ——— 4 LANE 16 LANE Light-duty ———
Medium-duty - - - 4 LANE 16 LANE Unimproved dirt - - -
U.S. Route State Route



INTERIOR - GEOLOGICAL SURVEY, R.3.E.
WASHINGTON, D.C. 1958
DIAGRAM OF TOWNSHIP
20000 foot grid based on U.S. zone system, F
rectangular coordinate system
To join Meadows map use dotted
projection corners
6 5 4 3 2 1
7 8 9 10 11 12
13 14 15 16 17 18
19 20 21 22 23 24
25 26 27 28 29 30
31 32 33 34 35 36
BOISE (VIA IDAHO 18) 118 MI.
RIGGINS, IDAHO
N4500-W1600/30

U.S.G.S.
FILE COPY
TOPOGRAPHIC DIVISION

CONTOUR INTERVAL 100 FEET
DATUM IS MEAN SEA LEVEL
FOR SALE BY U.S. GEOLOGICAL SURVEY, FEDERAL CENTER, DENVER, COLORADO OR WASHINGTON 25, D.C.
A FOLDER DESCRIBING TOPOGRAPHIC MAPS AND SYMBOLS IS AVAILABLE ON REQUEST

USGS
Historical File
Topographic Division

1938

FEB 15 1955
2650