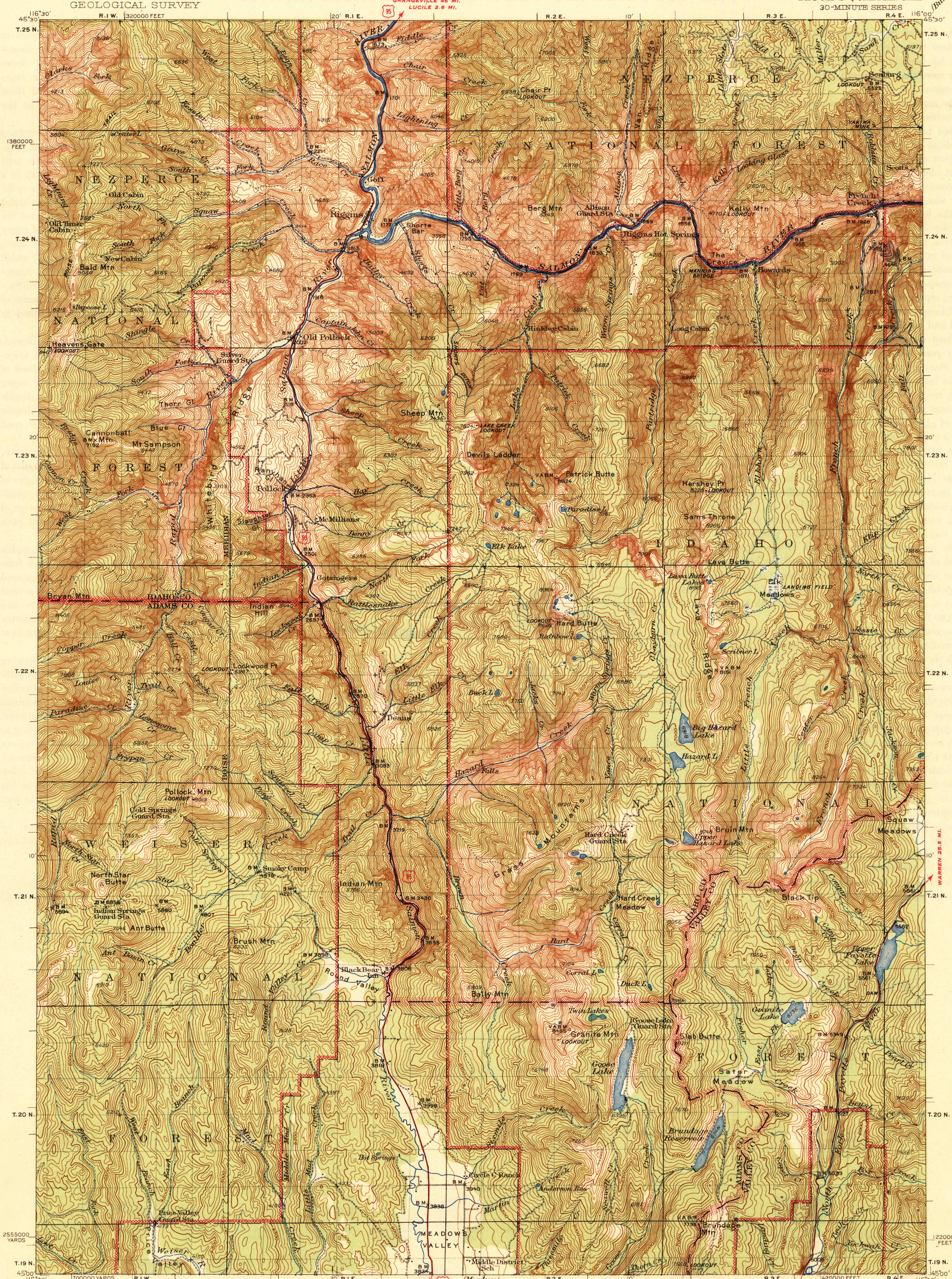


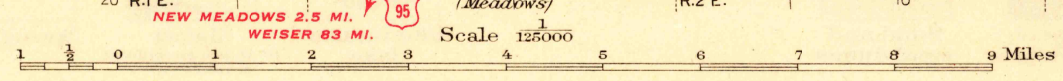
U. S. G. S.
FILE COPY
Inspection and Editing.

UNITED STATES
DEPARTMENT OF THE INTERIOR
GEOLOGICAL SURVEY

IDAHO
RIGGINS QUADRANGLE
30-MINUTE SERIES



Topography by C.A. Stonesifer, Adolph Fankhauser,
C.W. Birdseye, and D.S. Cruickshank
Surveyed in 1938



Contour interval 100 feet
Datum is mean sea level

Polyconic projection, 1927 North American datum
5000 yard grid based on U.S. zone system, F
20000 foot grid based on Idaho (West)
rectangular coordinate system
To join Meadows map use dotted
projection corners

MC CALL 7.6 MI. RIGGINS, IDAHO
Edition of 1945
N4500-W160030

USGS
Historical File
Topographic Division

JAN 27 1945

U. S. G. S.
FILE COPY
Inspection and Editing

2145