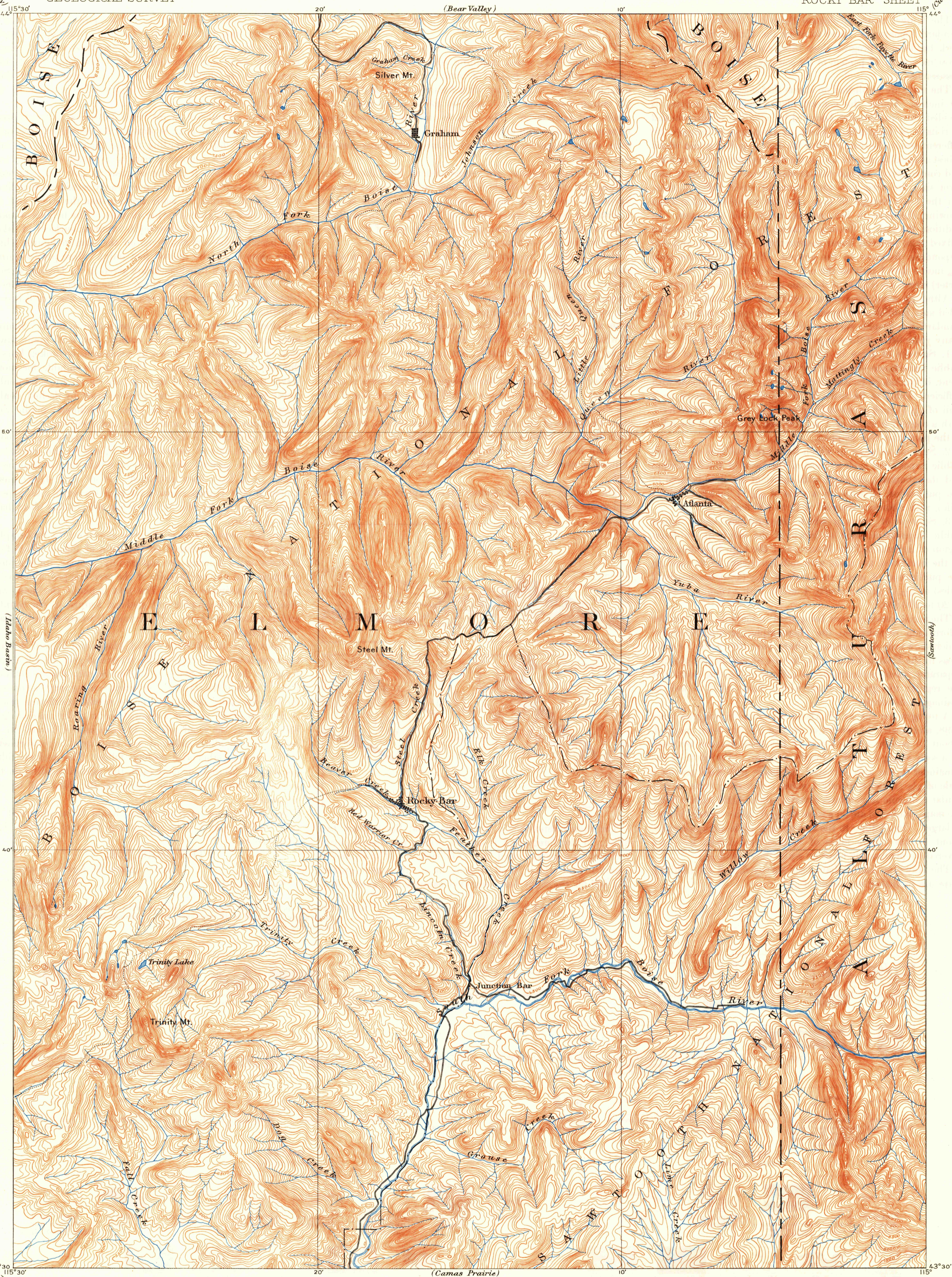


U. S. G. S.
FILE COPY
Inspection and Editing.

UNITED STATES
DEPARTMENT OF THE INTERIOR
GEOLOGICAL SURVEY

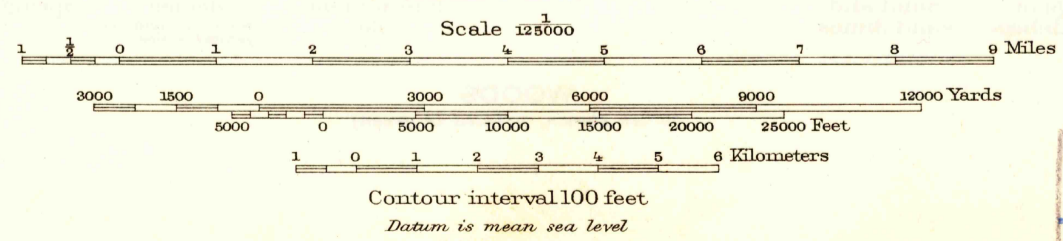
IDAHO
ROCKY BAR SHEET



U. S. G. S.
FILE COPY
Inspection and Editing.

U. S. G. S.
FILE COPY
Inspection and Editing.

A.H. Thompson, Geographer.
W.T. Griswold, Topographer in charge.
Triangulation by W.T. Griswold.
Topography by E.T. Perkins Jr.
Surveyed in 1891.



Surveyed by reconnaissance methods
Polyconic projection.

ROCKY BAR, IDAHO.
Edition of 1894,
reprinted 1948.
N4330-W11500/30

USGS
Historical File
Topographic Division
Inspection and Editing

DEC 2 1948
3240