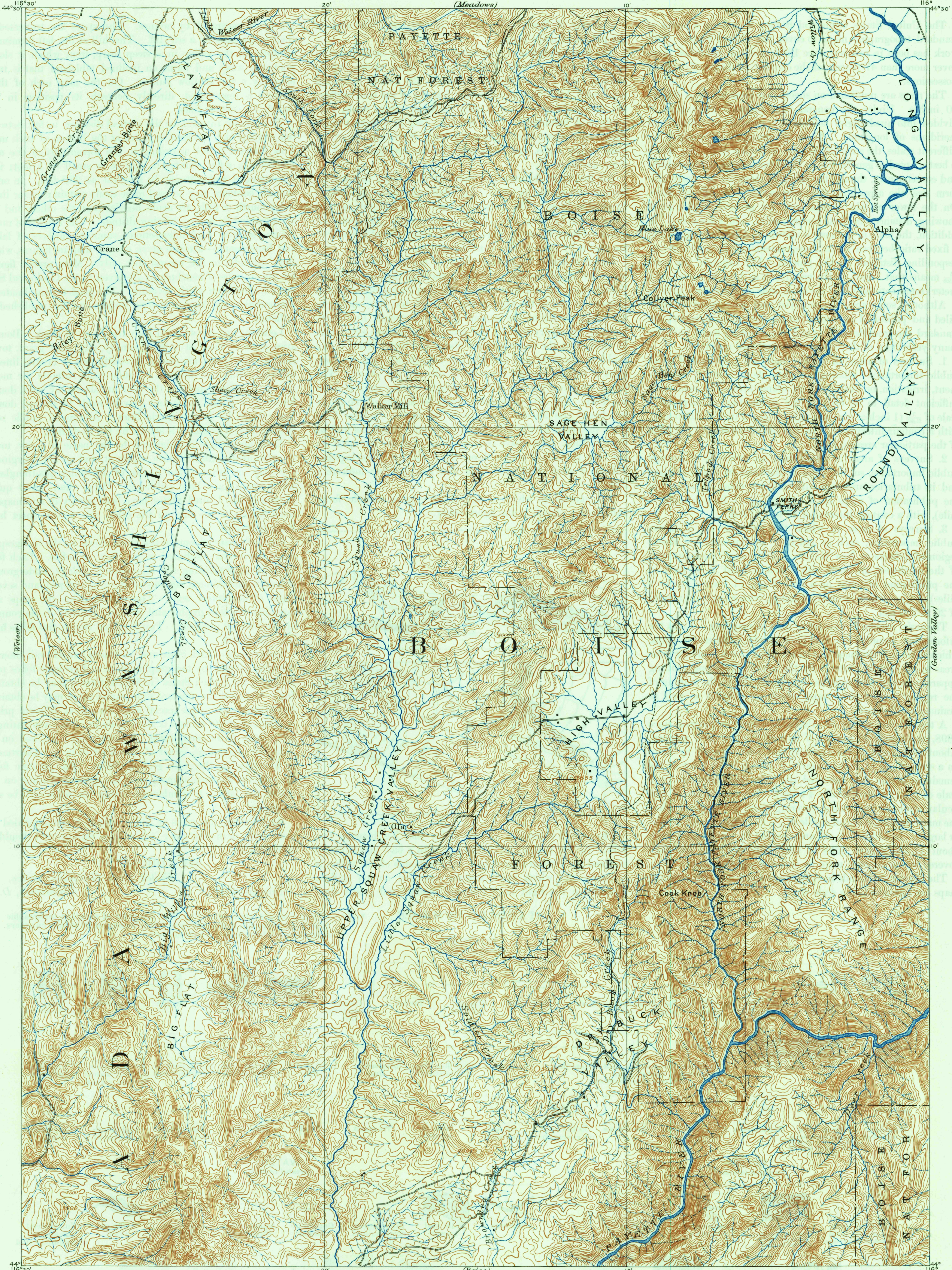


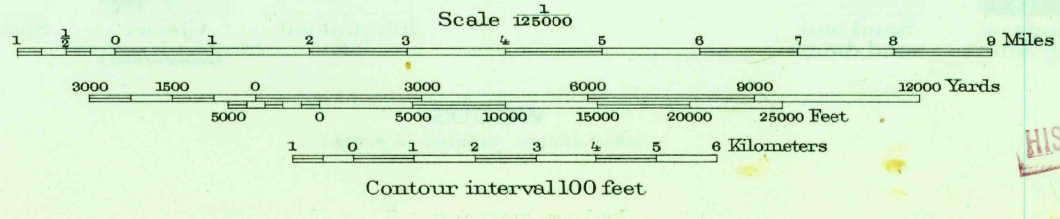
U.S.G.S.
FILE COPY
Inspection and Editing.



U.S.G.S.
FILE COPY
Inspection and Editing.

U.S.G.S.
FILE COPY
Inspection and Editing.

A.H. Thompson Geographer.
W.T. Griswold Topographer in charge.
Triangulation by W.T. Griswold.
Topography by W.P. Trowbridge Jr.
Surveyed in 1891



Edition of Jan. 1894, reprinted 1948
Polyconic projection.
Surveyed by reconnaissance methods.

USGS
Historical File
Topographic Division

U.S.G.S.
FILE COPY
Inspection and Editing.

IDAHO
SQUAW CREEK
N4400-W1600/30

HISTORICAL
DEC 7 1948

3230