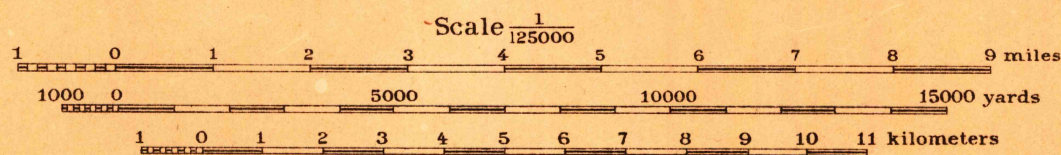


Compiled under the direction of Major A.R. Ehrnbeck,
Corps of Engineers, U. S. A.,
Engineer, 9th Corps Area, 1922.

U. S. General Land Office Plats, Clearwater and
Selway Forest Reserve Maps, Clearwater and Idaho
County Maps and Nez Perce Indian Reserve Map.

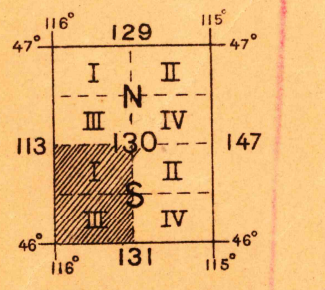


Contour Interval 200 feet

Datum is mean sea level

FIVE THOUSAND YARD GRID COMPUTED FROM "GRID SYSTEM FOR PROGRESSIVE MAPS
IN THE U. S." ZONE F, U. S. C. & G. S. SPECIAL PUBLICATION NO. 59.
(THE LAST THREE DIGITS OF THE GRID NUMBERS ARE OMITTED)

NOTE: OFFICERS USING THIS MAP WILL MARK HEREON CORRECTIONS AND ADDITIONS WHICH COME



RETURN TO:
USGS AND HISTORICAL MAP ARCHIVES

WEIPPE