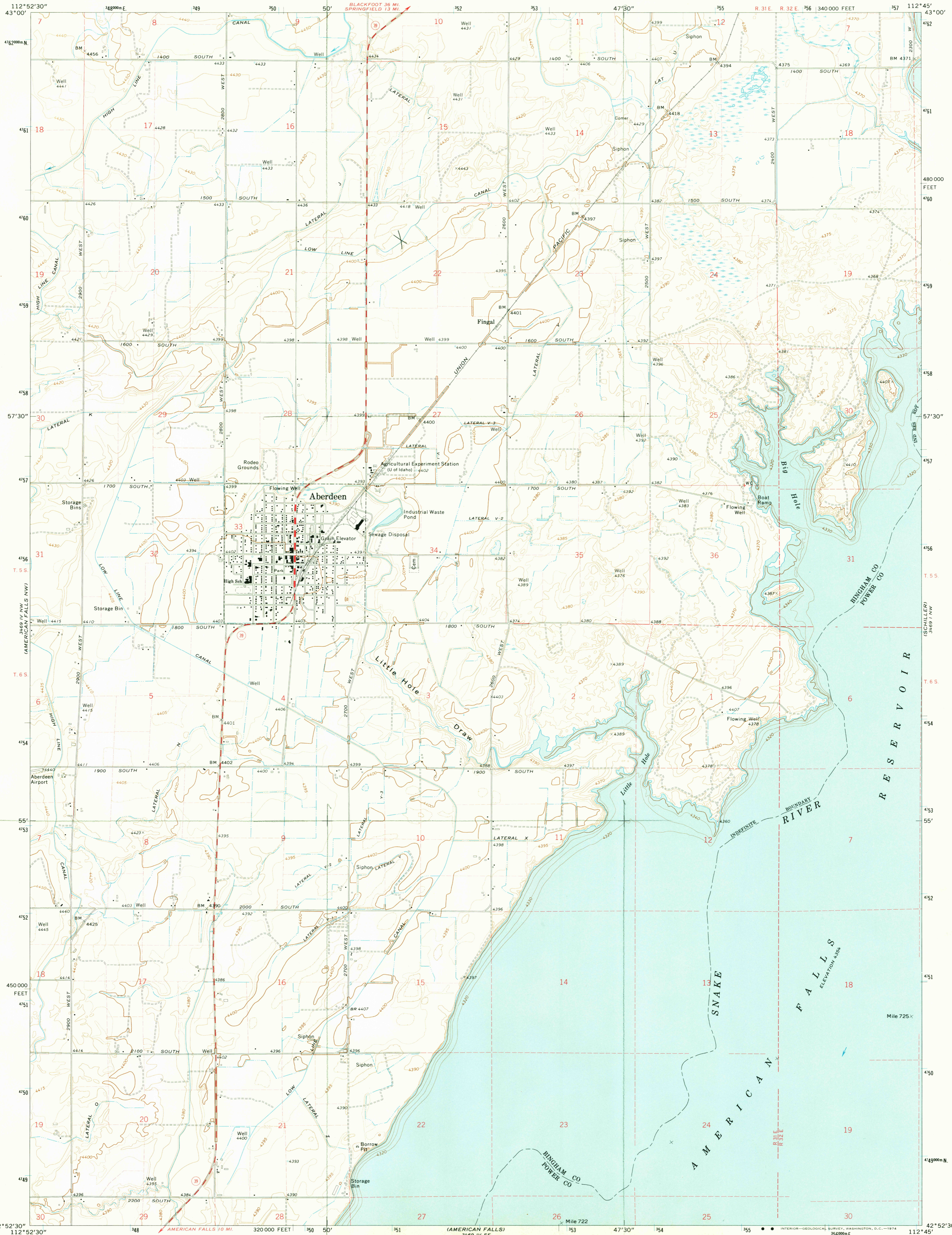
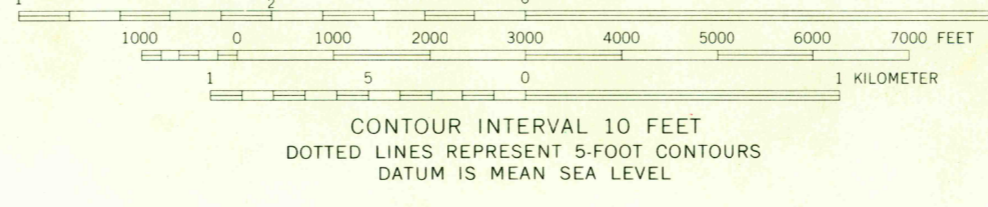
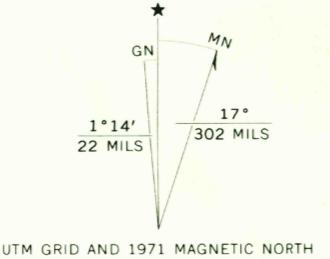


3470 1/4 NW  
(SPRINGFIELD)



Mapped, edited, and published by the Geological Survey  
Control by USGS and USC&GS  
Topography by photogrammetric methods from aerial photographs taken 1969. Field checked 1971  
Underwater contours by U. S. Bureau of Reclamation  
Projection and 10,000-foot grid ticks: Idaho coordinate system, east zone (transverse Mercator)  
1000-meter Universal Transverse Mercator grid ticks, zone 12, shown in blue. 1927 North American datum  
Fine red dashed lines indicate selected fence lines



ROAD CLASSIFICATION

Primary highway, hard surface	Light duty road, hard or improved surface
Secondary highway, hard surface	Unimproved road
Interstate Route	U. S. Route
	State Route



THIS MAP COMPLIES WITH NATIONAL MAP ACCURACY STANDARDS  
FOR SALE BY U. S. GEOLOGICAL SURVEY, DENVER, COLORADO 80225, OR WASHINGTON, D. C. 20242  
A FOLDER DESCRIBING TOPOGRAPHIC MAPS AND SYMBOLS IS AVAILABLE ON REQUEST

USGS  
Historical File  
Topographic Division

ABERDEEN, IDAHO  
NE 1/4 AMERICAN FALLS 15' QUADRANGLE  
N4252.5-W11245.7.5

AUG 20 1974

1971  
AMS 3469 IV NE-SERIES V893

2790