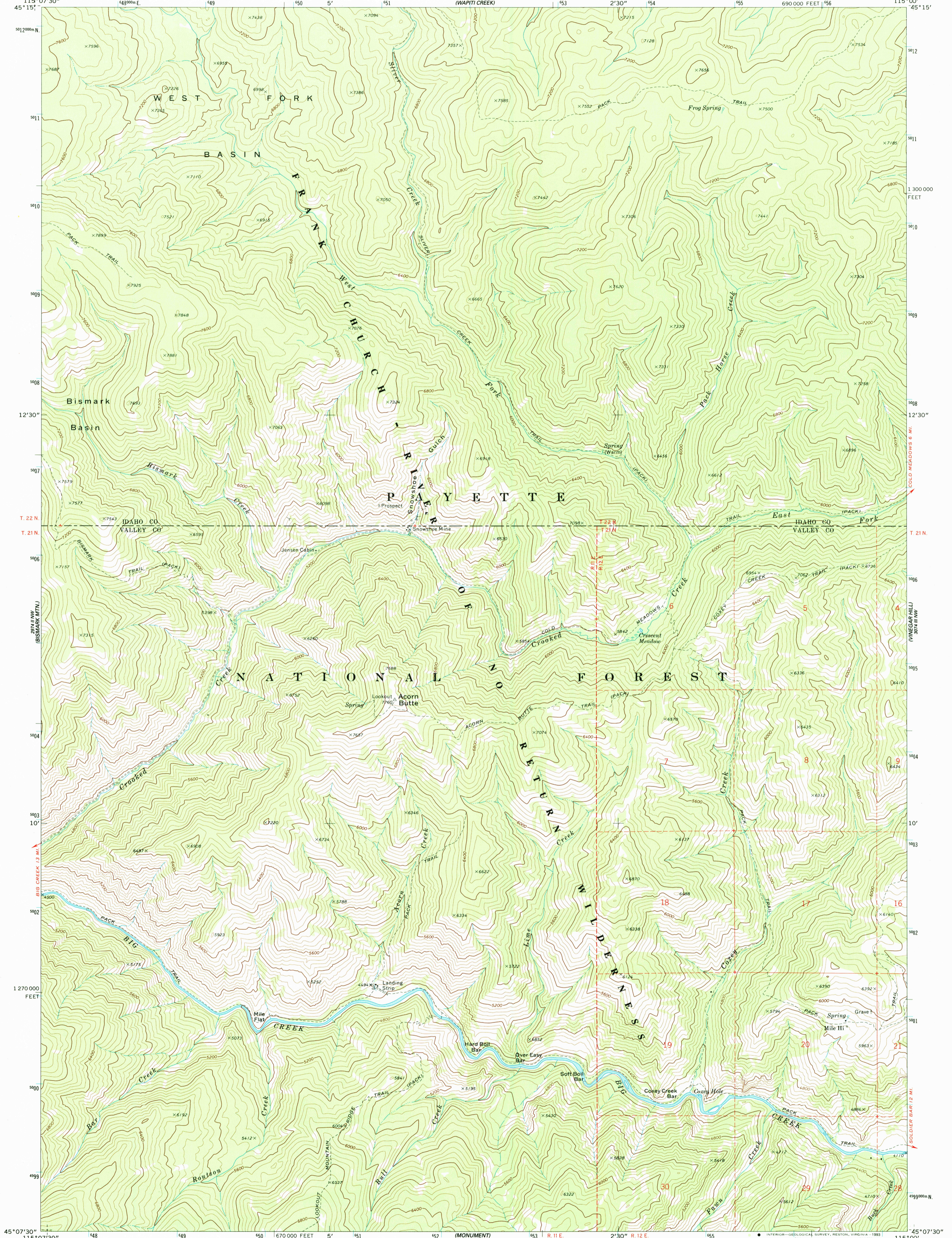
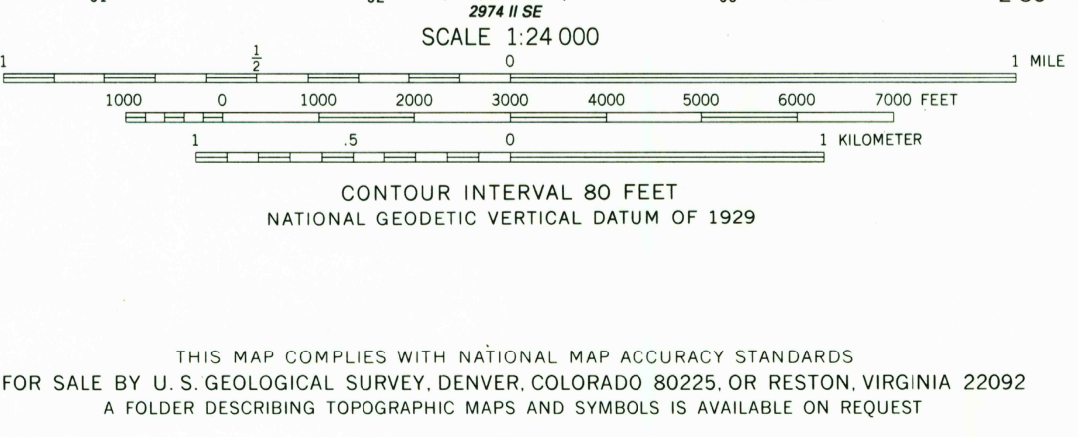
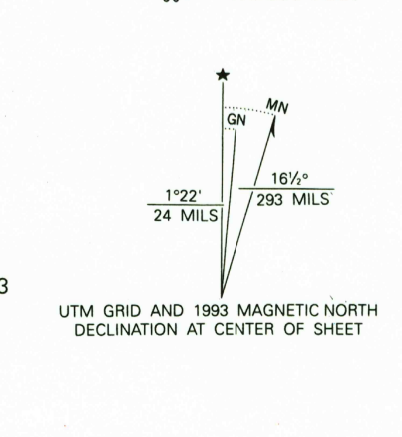


2974 NW
LOGGERS CREEK

2974 SW
COLD MEADOWS



Produced by the United States Geological Survey
Control by USGS, NOS/NOAA, and U.S. Forest Service
Compiled from aerial photographs taken 1964 and 1972
Field checked 1973
1927 North American Datum (NAD 27). Projection and
10000-foot ticks: Idaho Coordinate System, west zone
(Transverse Mercator)
Blue 1000-meter Universal Transverse Mercator ticks, zone 11
North American Datum of 1983 (NAD 83) is shown by dashed
corner ticks. The values of the shift between NAD 27 and NAD 83
for 7.5-minute intersections are given in USGS Bulletin 1875
There may be private inholdings within the boundaries of the
National or State reservations shown on this map
Where omitted, land lines have not been established



ROAD CLASSIFICATION

Primary highway, hard surface	Light-duty road, hard or improved surface
Secondary highway, hard surface	Unimproved road

○ Interstate Route □ U. S. Route ○ State Route

ACORN BUTTE, IDAHO
45115-B1-TF-024
1973
DMA 2974 II NE-SERIES V893

USGS HISTORICAL
MAP ARCHIVES
DEC 01 1993
REC'D FILE COPY