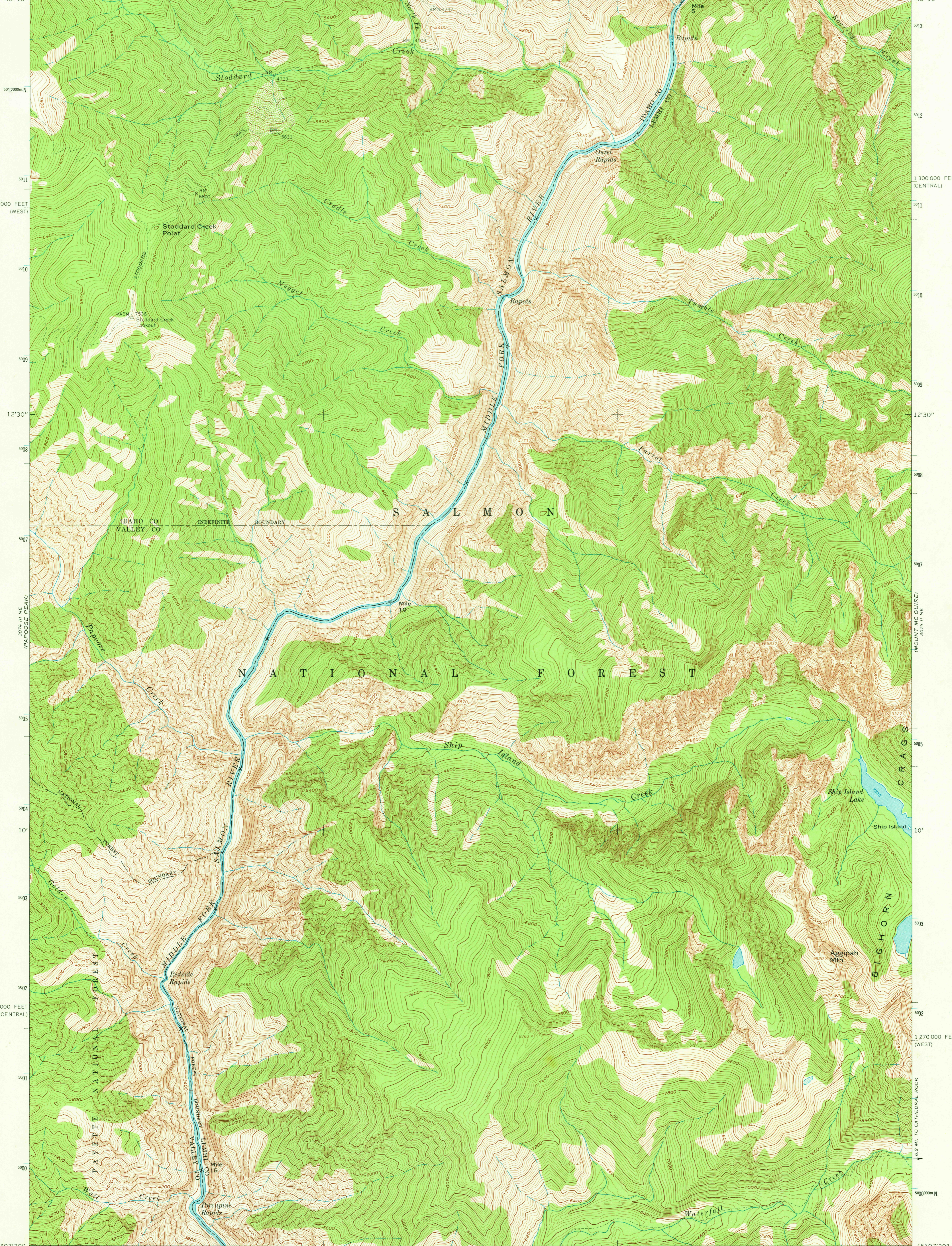
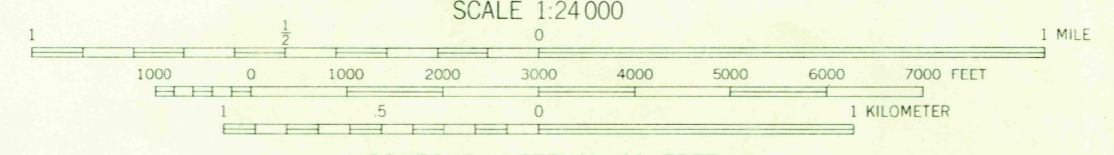
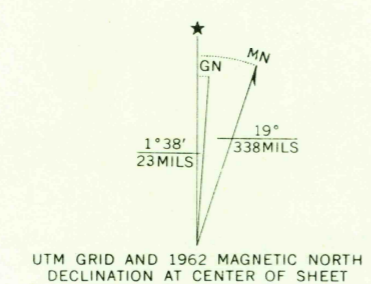


114°45' 45°15' 114°37'30" 45°15' 114°37'30" 45°15' 114°37'30" 45°15' 114°37'30" 45°15'



Mapped, edited, and published by the Geological Survey
Control by USGS and USC&GS

Topography by photogrammetric methods from aerial photographs taken 1957. Field checked 1962
Polyconic projection. 1927 North American datum
10,000-foot grids based on Idaho coordinate system, central and west zones
1000-meter Universal Transverse Mercator grid ticks, zone 11, shown in blue



CONTOUR INTERVAL 40 FEET
DOTTED LINES REPRESENT 20-FOOT CONTOURS
DATUM IS MEAN SEA LEVEL

THIS MAP COMPLIES WITH NATIONAL MAP ACCURACY STANDARDS
FOR SALE BY U.S. GEOLOGICAL SURVEY, DENVER, COLORADO 80225, OR WASHINGTON, D.C. 20242
A FOLDER DESCRIBING TOPOGRAPHIC MAPS AND SYMBOLS IS AVAILABLE ON REQUEST



JUL 10 1973

AGGIPAH MTN., IDAHO
N4507.5—W11437.5/7.5

USGS
Historical File
Topographic Division
1962
AMS 3074 II NW—SERIES V893

3270