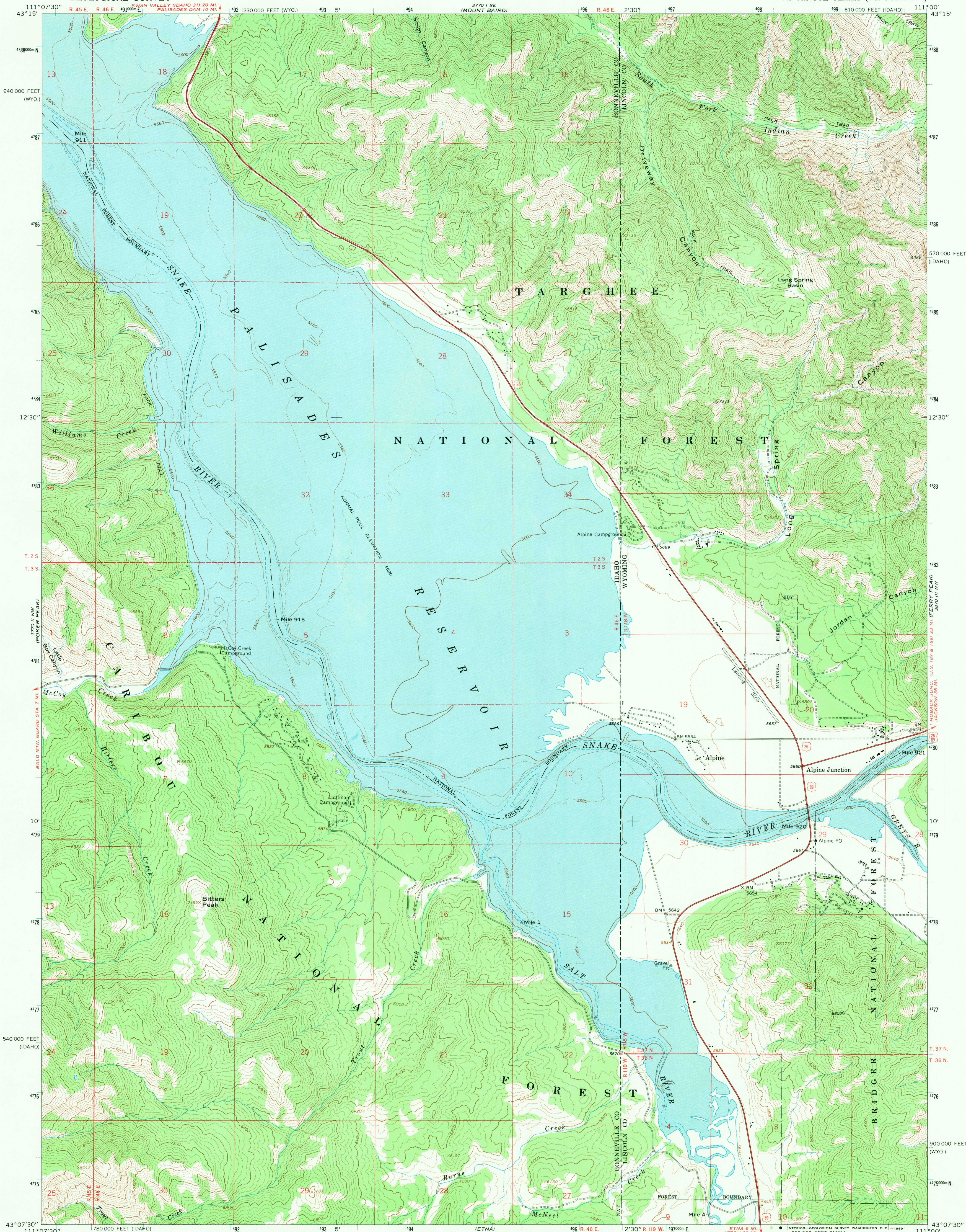


UNITED STATES  
DEPARTMENT OF THE INTERIOR  
GEOLOGICAL SURVEY

ALPINE QUADRANGLE  
IDAHO-WYOMING  
7.5 MINUTE SERIES (TOPOGRAPHIC)



Mapped, edited, and published by the Geological Survey

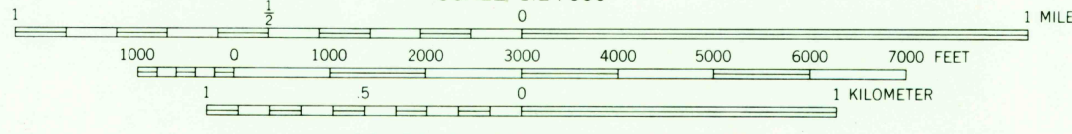
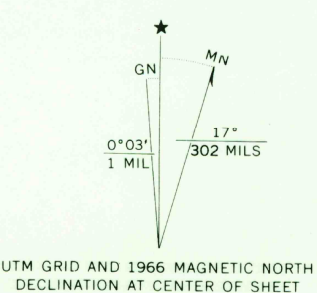
Control by USGS and USC&GS

Topography by photogrammetric methods from aerial  
photographs taken 1965. Field checked 1966  
Underwater contours by U.S. Bureau of Reclamation

Polyconic projection. 1927 North American datum  
10,000-foot grids based on Idaho coordinate system,  
east zone, and Wyoming coordinate system, west zone  
1000-meter Universal Transverse Mercator grid ticks,  
zone 12, shown in blue

Fine red dashed lines indicate selected fence lines

Where omitted, land lines have not been established



THIS MAP COMPLIES WITH NATIONAL MAP ACCURACY STANDARDS  
FOR SALE BY U.S. GEOLOGICAL SURVEY, DENVER, COLORADO 80225, OR WASHINGTON, D.C. 20242  
A FOLDER DESCRIBING TOPOGRAPHIC MAPS AND SYMBOLS IS AVAILABLE ON REQUEST



USGS  
Historical File  
Topographic Division

ROAD CLASSIFICATION  
Heavy-duty ——— Light-duty ———  
Unimproved dirt ———  
U.S. Route

ALPINE, IDAHO-WYO.  
N4307.5-W11100.7.5

1966

AMS 3770 II NE-SERIES V893

U.S.G.S.  
FILE COPY  
TOPOGRAPHIC DIVISION

DEC 12 1969