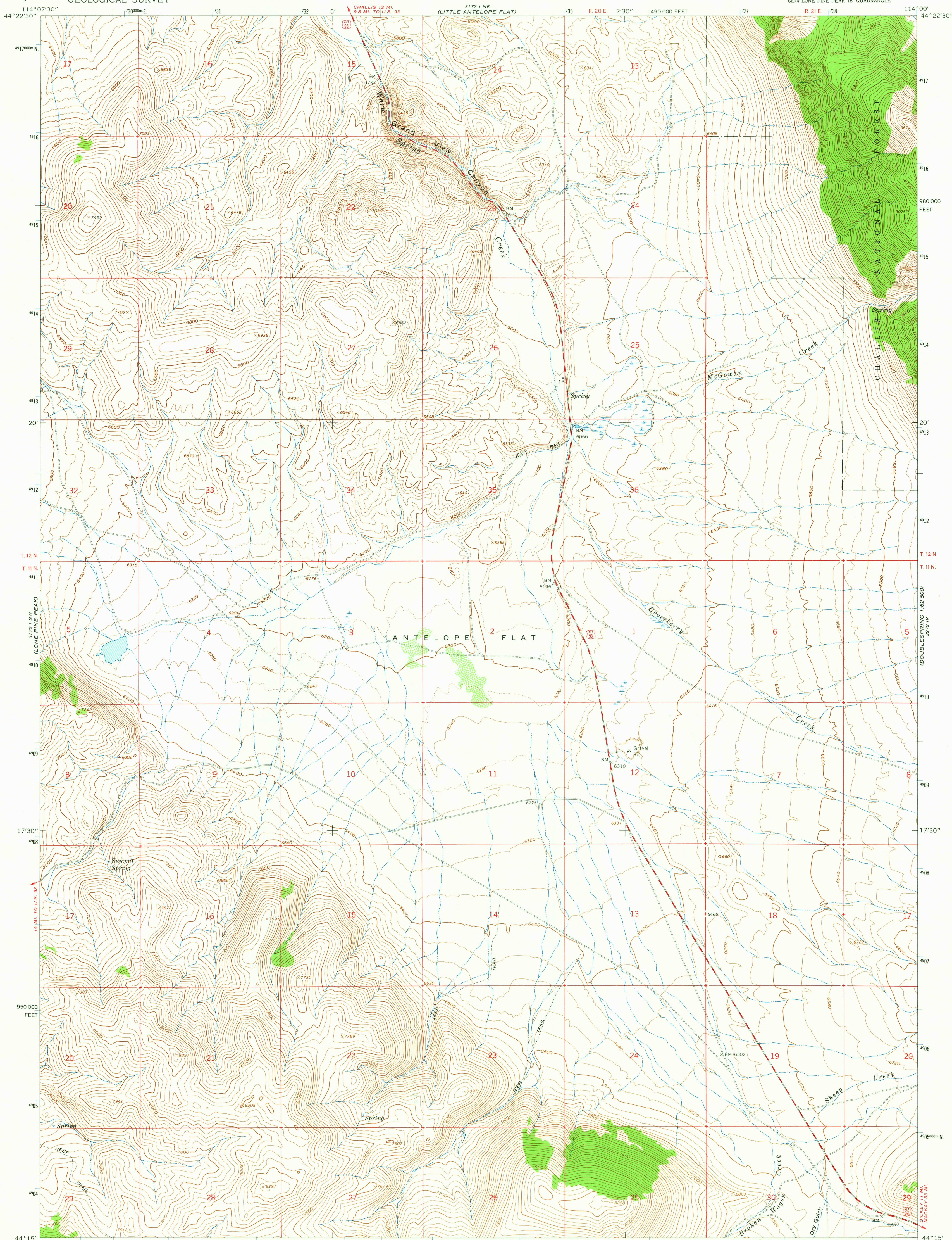
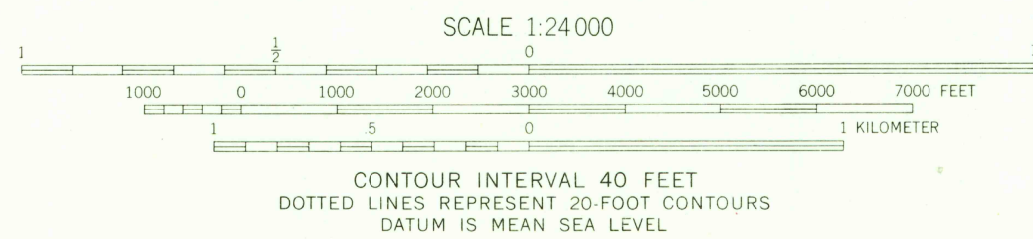
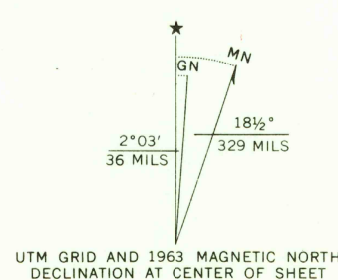


UNITED STATES  
DEPARTMENT OF THE INTERIOR  
GEOLOGICAL SURVEY

ANTELOPE FLAT QUADRANGLE  
IDAHO-CUSTER CO.  
7.5 MINUTE SERIES (TOPOGRAPHIC)  
SE/4 LONE PINE PEAK 15' QUADRANGLE



Mapped, edited, and published by the Geological Survey  
Control by USGS and USC&GS  
Topography by photogrammetric methods from aerial  
photographs taken 1957. Field checked 1963  
Polyconic projection. 1927 North American datum  
10,000-foot grid based on Idaho coordinate system, central zone  
1000-meter Universal Transverse Mercator grid ticks,  
zone 11, shown in blue  
Where omitted, land lines have not been established



USGS  
Historical File  
Topographic Division

ROAD CLASSIFICATION  
Light-duty  
Unimproved dirt  
U.S. Route

ANTELOPE FLAT, IDAHO  
SE/4 LONE PINE PEAK 15' QUADRANGLE  
N4415-W11400/7.5

1963  
AMS 3172 I SE-SERIES V893

FILE COPY  
TOPOGRAPHIC DIVISION

U.S.G.S. FEB 24 1963