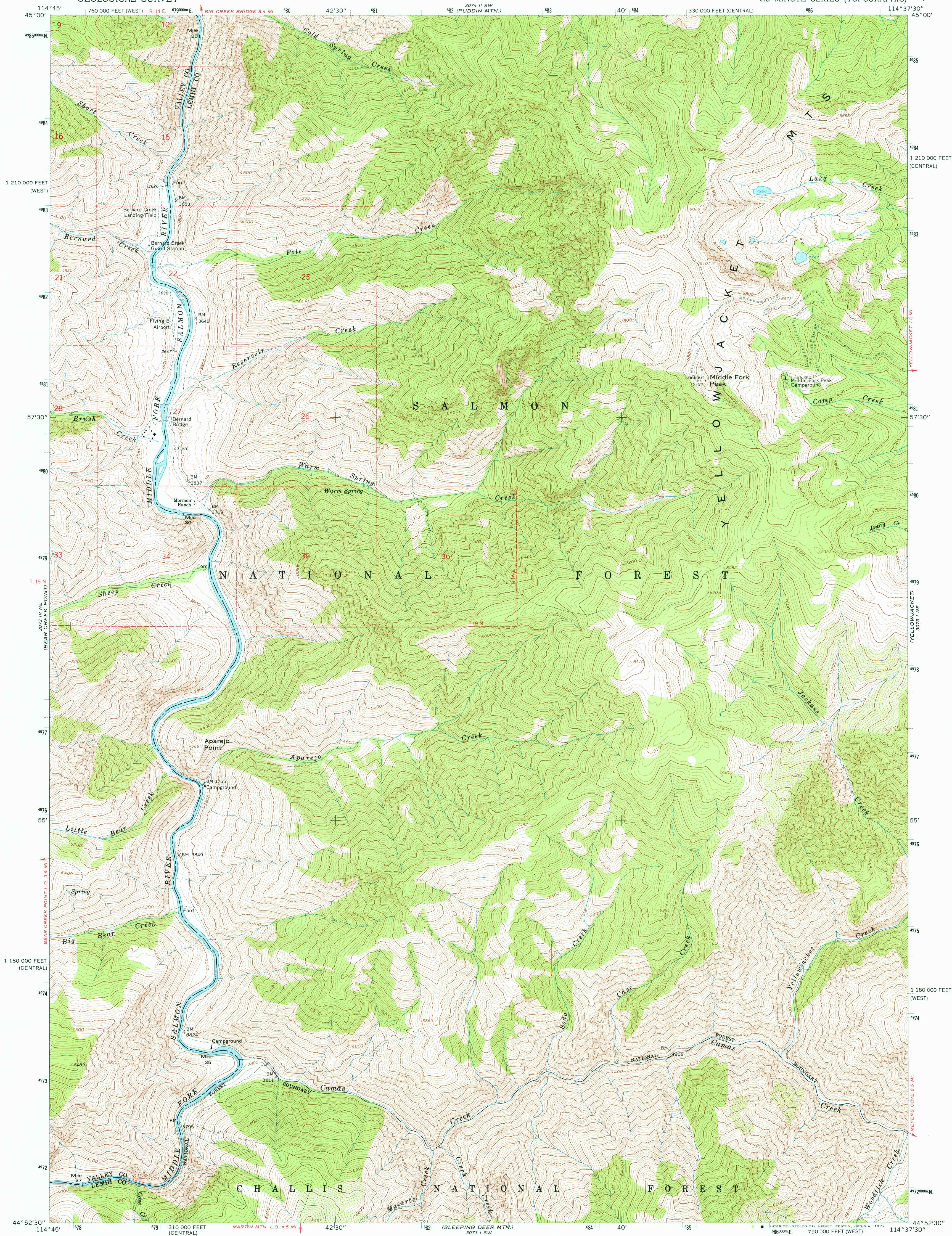
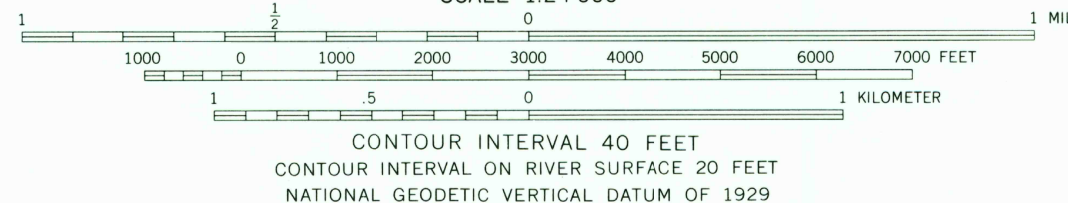
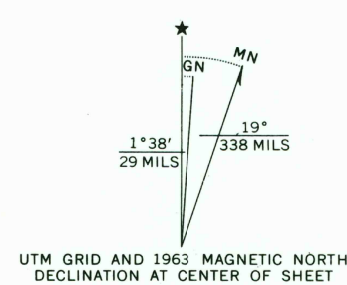


UNITED STATES  
DEPARTMENT OF THE INTERIOR  
GEOLOGICAL SURVEY

APAREJO POINT QUADRANGLE  
IDAHO  
7.5 MINUTE SERIES (TOPOGRAPHIC)



Mapped, edited, and published by the Geological Survey  
Control by USGS and USC&GS  
Topography by photogrammetric methods from aerial  
photographs taken 1957. Field checked 1963  
Polyconic projection. 1927 North American datum  
10,000-foot grids based on Idaho coordinate system,  
central and west zones  
1000-meter Universal Transverse Mercator grid ticks,  
zone 11, shown in blue  
Where omitted, land lines have not been established  
National Forest shown by proclamation boundary  
Private ownership not shown within National Forest



ROAD CLASSIFICATION  
Unimproved dirt =-----

APAREJO POINT, IDAHO  
N4452.5-W11437.5/7.5

USGS  
Historical File  
Topographic Division

1963

AMS 3073 I NW-SERIES V893

THIS MAP COMPLIES WITH NATIONAL MAP ACCURACY STANDARDS  
FOR SALE BY U. S. GEOLOGICAL SURVEY, DENVER, COLORADO 80225, OR RESTON, VIRGINIA 22092  
A FOLDER DESCRIBING TOPOGRAPHIC MAPS AND SYMBOLS IS AVAILABLE ON REQUEST

JAN 4 1977