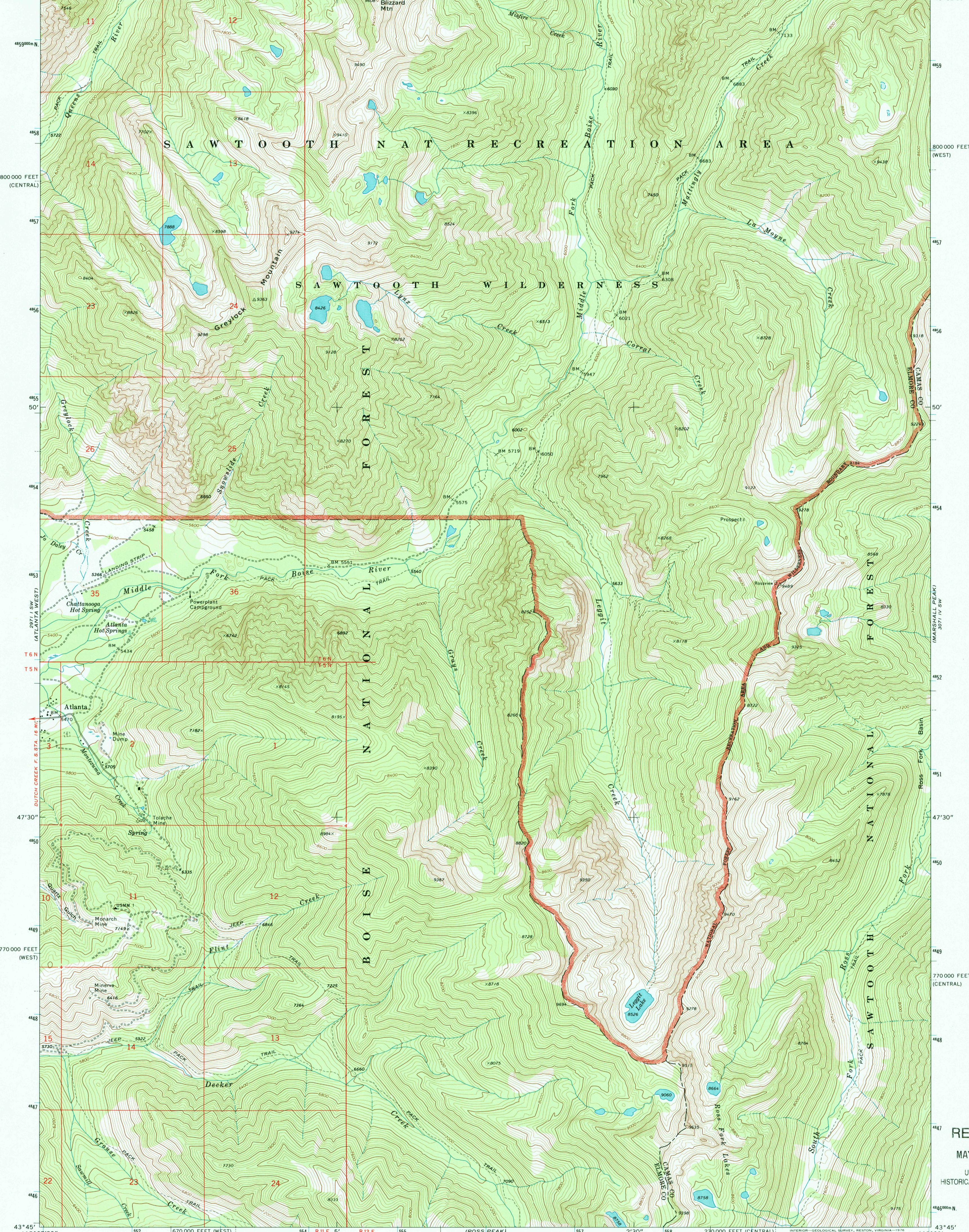
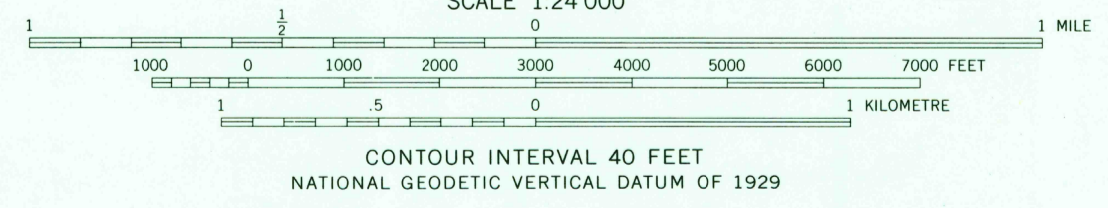
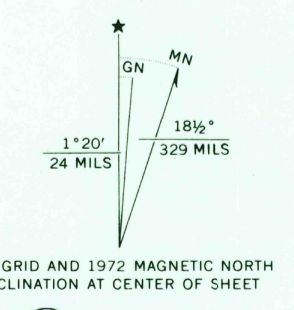


3971 IV NW
(SNOWSIDE PEAK)

115° 07' 30" 151900m E 210 000 FEET (CENTRAL) 53 R 11 E R 12 E 5' 2971 I NE (MOUNT EVERLY) 56 57 2' 30" 58 690 000 FEET (WEST) 115° 00' 43° 52' 30"



Mapped, edited, and published by the Geological Survey
Control by USGS and NOS/NOAA
Topography by photogrammetric methods from aerial photographs taken 1970-71. Field checked 1972
Projection: Idaho coordinate system, west zone (transverse Mercator)
10,000-foot grid ticks based on Idaho coordinate system, west and central zones
1000-metre Universal Transverse Mercator grid ticks, zone 11, shown in blue. 1927 North American datum
Where omitted, land lines have not been established



ROAD CLASSIFICATION

Primary highway, hard surface	Light-duty road, hard or improved surface
Secondary highway, hard surface	Unimproved road
Interstate Route	U. S. Route
	State Route

RECEIVED
MAY 3 1 1999
USGS NMD
HISTORICAL MAP ARCHIVES

ATLANTA EAST, IDAHO
N4345-W11500/7.5

1972
AMS 2971 I SE-SERIES V893

