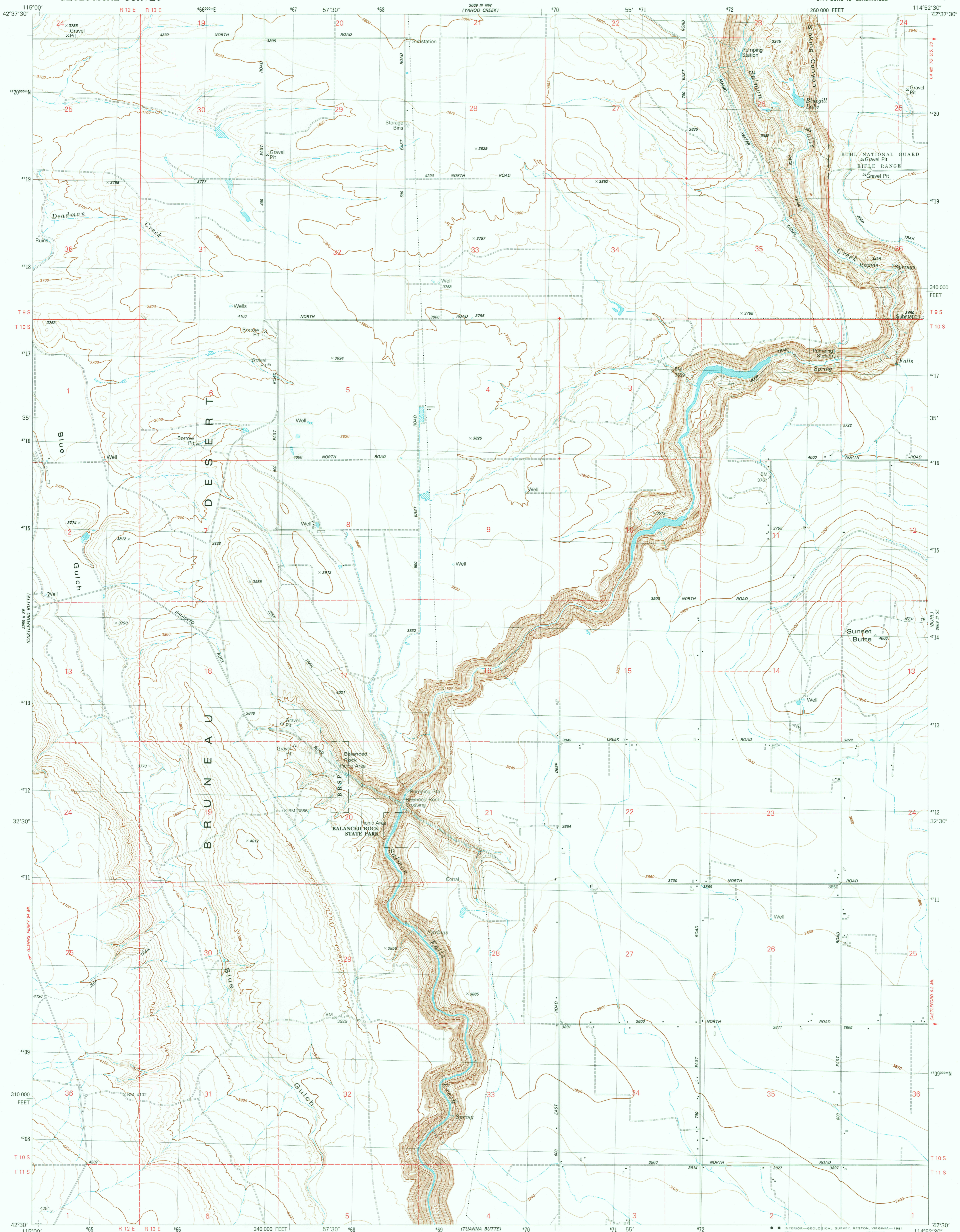


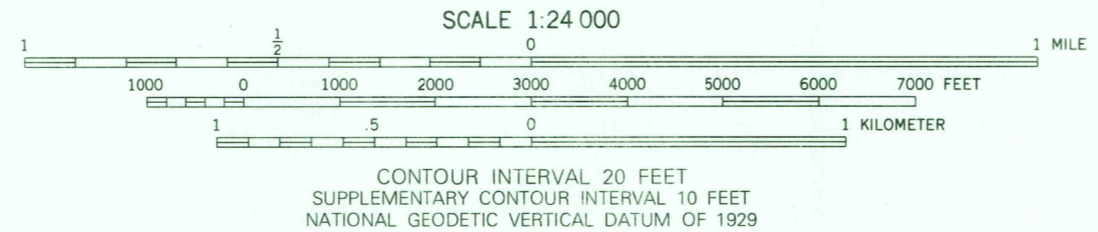
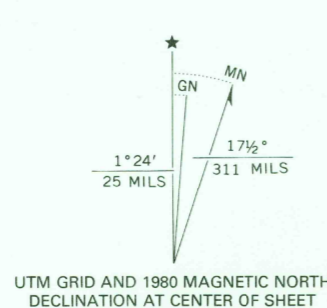
UNITED STATES  
DEPARTMENT OF THE INTERIOR  
GEOLOGICAL SURVEY

BALANCED ROCK QUADRANGLE  
IDAHO-TWIN FALLS CO.  
7.5 MINUTE SERIES (TOPOGRAPHIC)  
SW/4 BUHL 15' QUADRANGLE



Mapped, edited, and published by the Geological Survey

Control by USGS and NOS/NOAA  
Topography by photogrammetric methods from aerial photographs taken 1974. Field checked 1975. Map edited 1980  
Projection and 10,000-foot grid ticks: Idaho coordinate system, central zone (transverse Mercator)  
1000-meter Universal Transverse Mercator grid, zone 11  
1927 North American Datum  
To place on the predicted North American Datum 1983 move the projection lines 14 meters north and 74 meters east as shown by dashed corner ticks  
Fine red dashed lines indicate selected fence and field lines where generally visible on aerial photographs  
This information is unchecked  
There may be private inholdings within the boundaries of the National or State reservations shown on this map



ROAD CLASSIFICATION

Primary highway, hard surface  
Secondary highway, hard surface  
Unimproved road

Light-duty road, hard or improved surface  
Interstate Route  
U. S. Route  
State Route

THIS MAP COMPLIES WITH NATIONAL MAP ACCURACY STANDARDS  
FOR SALE BY U. S. GEOLOGICAL SURVEY, DENVER, COLORADO 80225, OR RESTON, VIRGINIA 22092  
A FOLDER DESCRIBING TOPOGRAPHIC MAPS AND SYMBOLS IS AVAILABLE ON REQUEST

BALANCED ROCK, IDAHO  
SW/4 BUHL 15' QUADRANGLE  
N4230-W11452.5/7.5

1980  
DMA 3089 III SW-SERIES V893

FEB 17 1981  
2100  
USGS  
Historical File  
Topographic Division