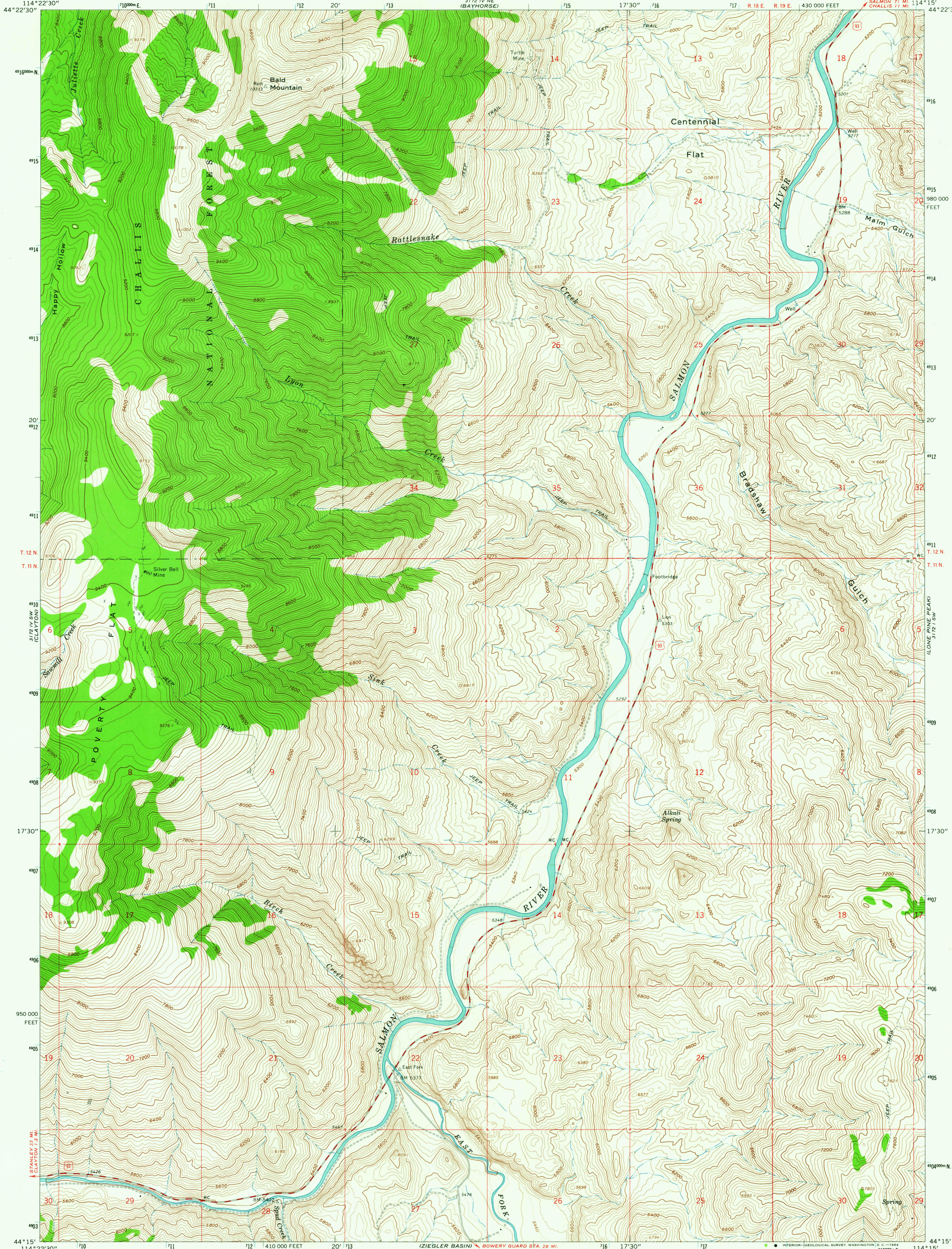
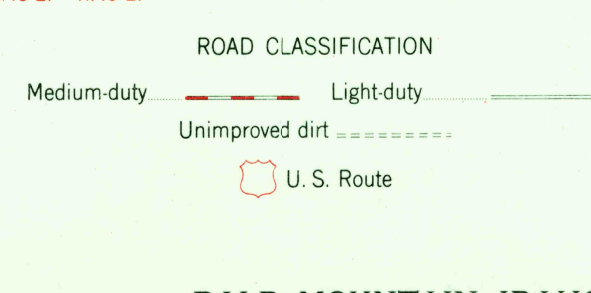
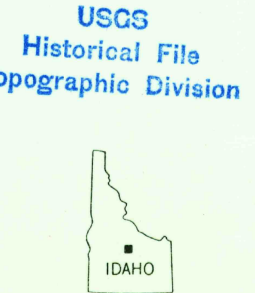
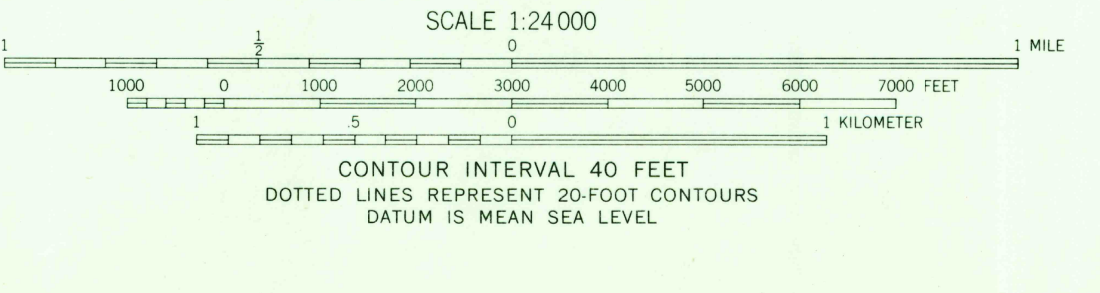
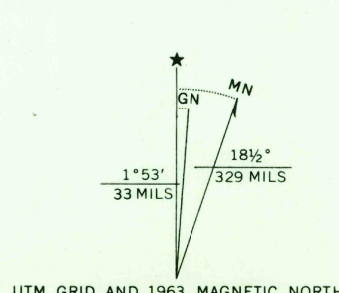


UNITED STATES
DEPARTMENT OF THE INTERIOR
GEOLOGICAL SURVEY

BALD MOUNTAIN QUADRANGLE
IDAHO—CUSTER CO.
7.5 MINUTE SERIES (TOPOGRAPHIC)
SE/4 CLAYTON 15' QUADRANGLE



Mapped, edited, and published by the Geological Survey
Control by USGS and USC&GS
Topography by photogrammetric methods from aerial
photographs taken 1957. Field checked 1963
Polyconic projection. 1927 North American datum
10,000-foot grid based on Idaho coordinate system, central zone
1000-meter Universal Transverse Mercator grid ticks,
zone 11, shown in blue
Where omitted, land lines have not been established



BALD MOUNTAIN, IDAHO
SE/4 CLAYTON 15' QUADRANGLE
N4415-W11415/7.5

1963

AMS 3172 IV SE—SERIES V893

THIS MAP COMPLIES WITH NATIONAL MAP ACCURACY STANDARDS
FOR SALE BY U. S. GEOLOGICAL SURVEY, DENVER 25, COLORADO OR WASHINGTON 25, D. C.
A FOLDER DESCRIBING TOPOGRAPHIC MAPS AND SYMBOLS IS AVAILABLE ON REQUEST

SEP 21 1964

2700

U.S.G.S.
FILE COPY
TOPOGRAPHIC DIVISION