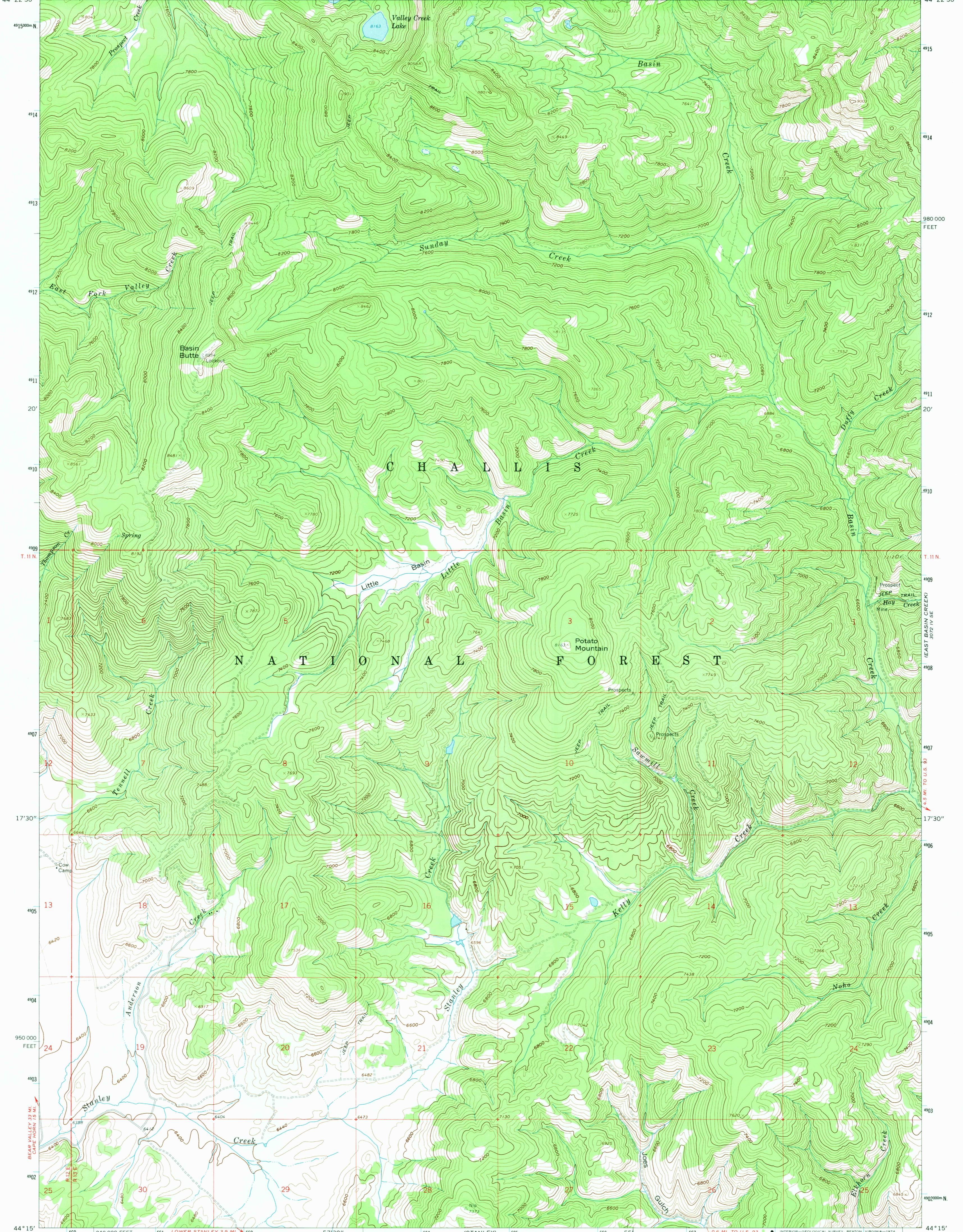
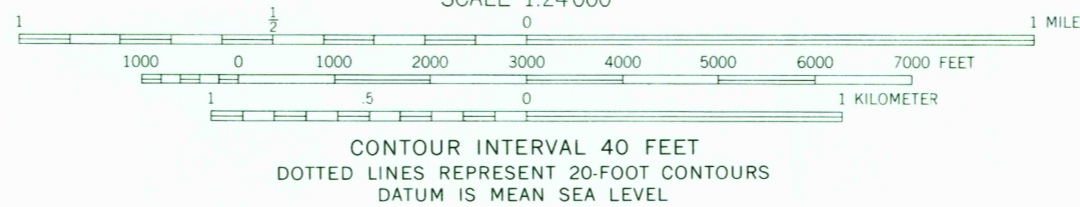
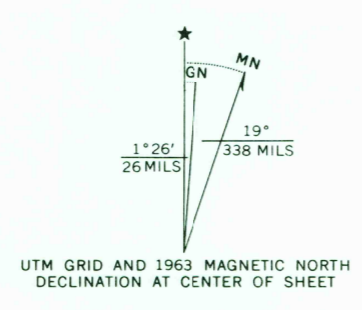


115°00' 1620000 E 461 57°30' 3072 IV NW (KNAPP LAKES) 465 55' 467 270 000 FEET 114°52'30" 44°22'30"



Mapped, edited, and published by the Geological Survey  
Control by USGS and USC&GS  
Topography by photogrammetric methods from aerial  
photographs taken 1957. Field checked 1963  
Polyconic projection. 1927 North American datum  
10,000-foot grid based on Idaho coordinate system, central zone  
1000-meter Universal Transverse Mercator grid ticks,  
zone 11, shown in blue  
Fine red dashed lines indicate selected fence lines  
Where omitted, land lines have not been established



ROAD CLASSIFICATION  
Light-duty ——— Unimproved dirt - - - - -

THIS MAP COMPLIES WITH NATIONAL MAP ACCURACY STANDARDS  
FOR SALE BY U. S. GEOLOGICAL SURVEY, DENVER, COLORADO 80225, OR RESTON, VIRGINIA 22092  
A FOLDER DESCRIBING TOPOGRAPHIC MAPS AND SYMBOLS IS AVAILABLE ON REQUEST

USGS  
HISTORICAL FILE  
TOPOGRAPHIC DIVISION  
BASIN BUTTE, IDAHO  
N4415—W11452.5/7.5  
1963

AMS 3072 IV SW—SERIES V893

FEB 13 1964